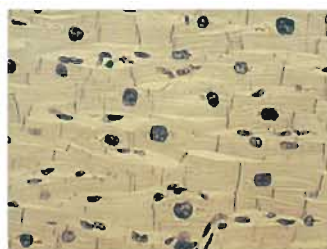
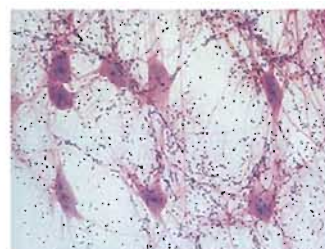




EHE03
Simple squamous
epithelium.w.m.



EHM03
Cardiac muscle human.sec.



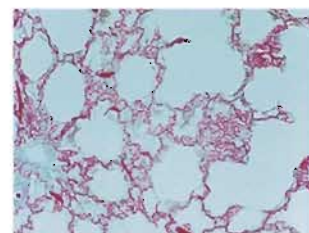
EHN01
Motor neuron.ox.w.m.



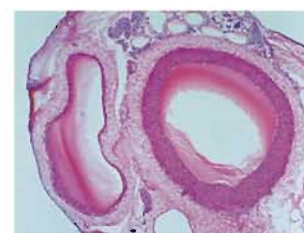
EHN02
Motor neuron endings.w.m.



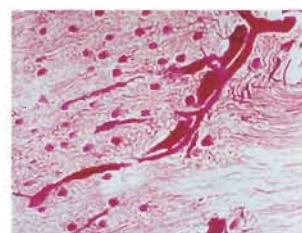
EHN04
Spinal cord.c.s.



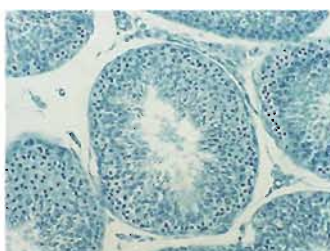
EHR01
Lung with blood vessels
injected



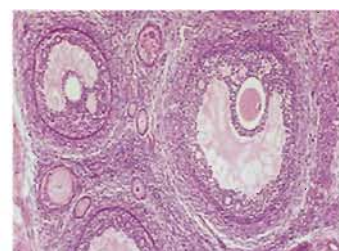
EHCi01
Artery and vein.c.s



EHU02
Kidney with blood
vessels injected.l.s.



EHR01
Testis.set.



EHR02
Ovary.sec.



EZA21
Cat male flea.w.m.



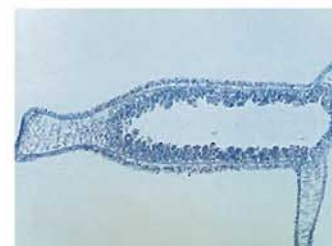
EZA28
Insect filiform antenna



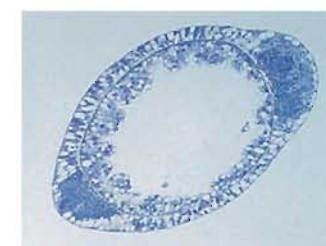
EZA42
Insect digging leg.w.m.



EZA43
Insect grasping leg.w.m.



EZC02
Hydra.l.s.



EZC04
Hydra with spermary.c.s.



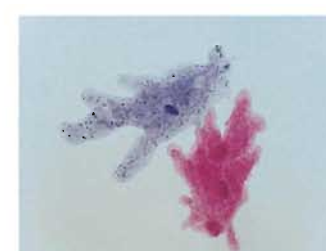
EZC06
Hydra with bud.w.m.



EZN03
Ascaris.c.s.



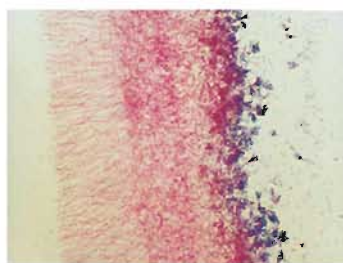
EZO05
Grasshopper testis sec.



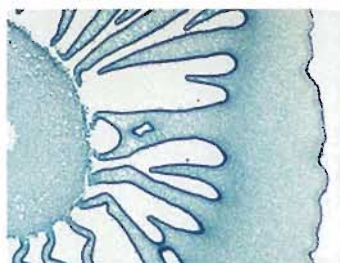
EZP01
Ameoba proteus.w.m



EBA04
Spirogyra.w.m.



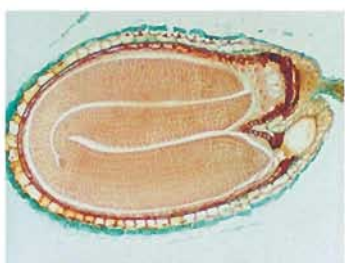
EBB03
Penicillium.w.m.



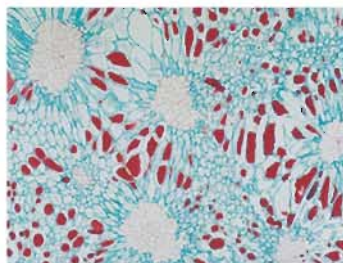
EBB05
Mushroom.sec.



EBB06
Rhizopus.w.m.



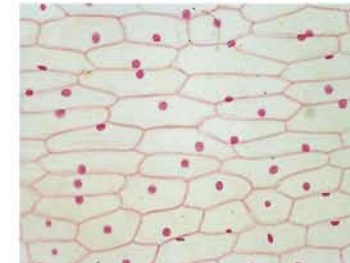
EBF08
Capsella older embryo.
sec.



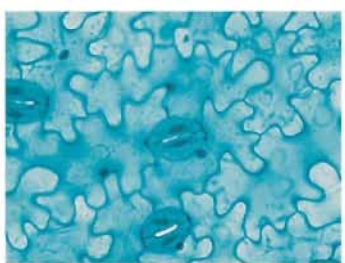
EBF11
Pear.sec.showing stone
cell



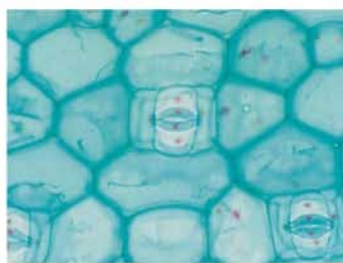
EBG01
Pine leaf



EBL02
Onion leaf epidermis.w.m.



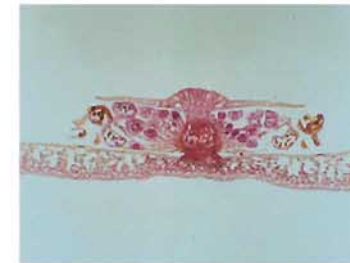
EBL09
Broad bean leaf lower
epidermis.w.m.



EBL10
Commelina communis leaf
epidermis. w.m.



EBM03
Moss protonema and bud



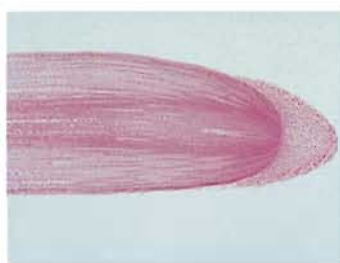
EBM08
Fern leaf.c.s.



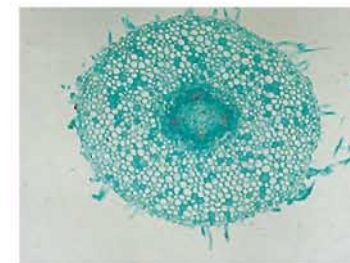
EBM09
Fern prothallus.w.m.



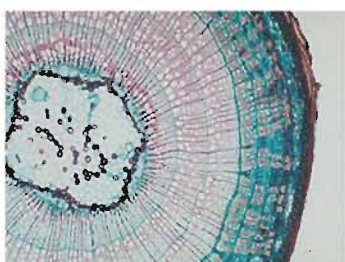
EBM10
Fern prothallus young
sporophyte



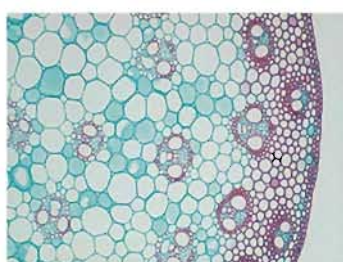
EBR01
Corn root tip



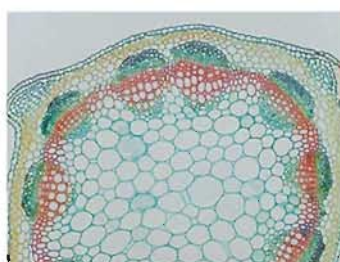
EBR03
Broad bean Root.c.s.



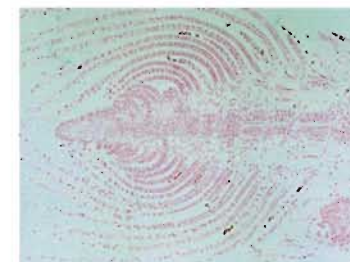
EBS
Three year tillia stem.c.s.



EBS02
Corn stem.c.s.



EBS10
Alfalfa stem.c.s.



EBS11
Top bud.l.s.

EXSP-44 Biological Microscope



Total magnification: 40x~400x
 Eyepieces: WF10x
 Objectives: 4x10x40xs
 Eyepiece Tube: Monocular 45° Inclined
 Tube Rotatable 360°
 Illumination: LED Electrical Illumination
 Coarse Adjustment Range: Coarse 15mm
 Working Stage: 90mmx90mm
 Condenser: 0.65

EXSP-911 Biological Microscope



Total magnification: 40x~1600x
 Eyepieces: WF10xWF16x
 Objectives: 4x10x40xs100xs
 Eyepiece Tube: Monocular 45° Inclined
 Tube Rotatable 360° Illumination:
 12V/20W, 6V/20W Halogen Lamp
 Coaxial Coarse And Fine Adjustment
 Range: 20mm Working Stage:
 Double Layer Mechanical Stage 115x125mm
 Condenser: NA 1.25 abe Condenser With
 Changeable Diaphragm,
 Moving Scale And Filter.

EXSZ-2105 Biological Microscope



Total magnification: 40x~1600x
 Eyepieces: WF10x(2PCS) WF16x(2PCS)
 Objectives: 4x10x40xs100xs
 Eyepiece Tube: Binocular 45° Inclined
 Tube Rotatable 360° Illumination:
 12V/20W, 6V/20W Halogen Lamp
 Coaxial Coarse And Fine Adjustment
 Range: 30mm Working Stage:
 Double Layer Mechanical Stage
 140x140mm Condenser: NA 1.25 abe
 Condenser With Changeable Diaphragm,
 Moving Scale And Filter.

EST5 Microscope



Stereo Microscope Technical Data
 Total magnification Times: 10x~40x
 Object Lens: 1x, 2x, 3x, 4x
 Eye Lens: WF10x
 Assistant Objectives: FZ0.5, FZ2.0
 Eyepiece Tube: 60° 54mm-76mm, 22mm
 Working Stage: Frosted, Glass or Black/
 White

EXSP-810 Biological Microscope



Total magnification: 40x~1600x
 Eyepieces: WF10x(2PCS) WF16x(2PCS)
 Objectives: 4x10x40xs100xs
 Eyepiece Tube: Binocular 45° Inclined Tube
 Rotatable 360° Illumination: 12V/20W, 6V/20W Halogen Lamp
 Coarse Adjustment Range: Coarse 15mm,
 Fine 1.6mm.
 Working Stage: 120mmx120mm
 Condenser: NA 1.25 abe Condenser With
 Changeable Diaphragm, Moving Scale And
 Filter.

EXSP-910 Biological Microscope



Total magnification: 40x~1600x
 Eyepieces: WF10x(2PCS) WF16x(2PCS)
 Objectives: 4x10x40xs100xs
 Eyepiece Tube: Binocular 45° Inclined
 Tube Rotatable 360° Illumination:
 12V/20W, 6V/20W Halogen Lamp
 Coarse Adjustment Range: Coaxial
 Coarse And Fine 20mm.
 Working Stage: Double Layer
 Mechanical Stage 115x125mm
 Condenser: NA 1.25 abe
 Condenser With Changeable Diaphragm,
 Moving Scale And Filter.

EXSP-51 Monocular microscope



Mechanical tube length: 70mm
 Eye lens: 10X eye lens Huygens
 Object lens: 16X achromatic object lens
 Object lens conjugate distance: 90mm
 Coarseness focusing range: 17mm
 Object stage dimension: 70x65mm

EXSP-31 Monocular microscope



Total magnification times: 70X, 150X, 400X
 Object lens magnification times: 7X, 15X, 40X
 Eye lens magnification times: 10X
 Focusing range: 8mm
 Object table dimension: 90x86mm

EXSP-61/62/63 Biological microscope



Mechanical tube length: 160mm
 Object lens: Achromatic object lens 4X: 10X, 40X, (S) or 100X(S) oil
 Eye lens: Wide-angle eye lens WF10X
 Object lens conjugate distance: 195mm
 Focusing: Divided micro drive focusing, coarseness focusing hand wheel can be adjusted for tight and loose.
 Stage: 120x130mm
 Condenser: Single Condenser with carousel diaphragm or NA1.25 Abbe Condenser with changeable diaphragm, shift scale and filter
 Illuminator: Plano-concave mirror or built in illuminator (110V/20W or 220V/20W)

EXS2-107B Monocular microscope



EXSP-01/02 Microscope



Mechanical tube length:160mm
Triple nosepiece
Eyepieces:H10X, H12.5X, H16X
185 achromatic objectives:4X/0.10, 10X/0.25, 40X/0.65 Separate fine & pinion. The rack stop prevents damage to slides & objectives. 50mm plano-concave mirror. Each set in a foam in an inner box, 4boxes in a master. Packing for option: Each set in a foam in box, 4 boxes in a

EXSP-03/04/05/06 Microscope



Mechanical tube length:160mm
Eyepieces:H5X, H10X, H12.5X, (H15X, H16X)
185 achromatic objectives:10XS/0.25, 40XS/0.65, 100XS/1.25(oil)
Magnification:1000X 1250X, 1500X, 1600X, With moving range, 110mm×120mm
50mm plano-concave mirror.
Accessories for option:Incandescent light.

EL101 Round table microscope



Mechanical tube length:160mm
Object lens: Achromatic object lens5X:10X:45X Eye lens: Huygens eye lens5X. 10X, 15X Coarseness focusing range, 40mm Micro drive focusing range: 1.8~2.2mm Object stage area: 120mm
illuminator: 50mm Planoconcave mirror or built-in illuminator(200v/20W)

EXSP-11 Present Microscopes



Eyepiece:F11.5
Objective:F6.2 F6.8 F3.7
Magnification:300X, 600X, 1200X
Mode electricity comp-house:DC
Present Packaging:Contain Suitcase
Projection equipment and experimentation appliance.

EXSP-12 Present Microscopes



Eyepiece:F11.5
Objective:F6.2 F6.8 F3.7
Magnification:300X, 600X, 1200X
Mode electricity comp-house:DC
Present Packaging:Contain Suitcase
Projection equipment and experimentation appliance.

EXSP-22/23 Microscope



Mechanical tube length:135mm
Focus range:76mm
Magnification:80X-200X
Eyepieces:H5X, H12X
Objective:16X
42mm View finder and Electricity Vamp-house(DC) Present Packaging: Contain Suitcase projection equipment and experimentation appliance.



EXT-3A Binocular head

Eye lens:WF10X
Object lens:2X/4X
Field of view: 20
Stage:melan-whiteness
illuminator:non-light treatment
Working distance:57mm



EXT-3B Binocular head

Eye lens:WF10X
Object lens:2X/4X
Field of view: 20
Stage:melan-whiteness
illuminator:light treatment
Working distance:57mm



EXT-3C Binocular head

Eye lens:WF10X
Object lens:2X/4X
Field of view: 20
Stage:frosted glass
illuminator:light treatment & perspective
Working distance:57mm

EXSP-3A 1



EXSP-3A 2



EXSP-3A 3



Microscope

Component	Specifcation	Models		
		XSP-3A1	XSP-3A2	XSP-3A3
Eyepiece Tube	Vertical monocular	•	•	
	Obliquity monocular			•
Eyepiece	Ramsden R10X(WF)	•	•	•
Objective	4X、10X、40X (R) oil	•	•	•
Stand	Fine & Coarse Focusing	•	•	•
	Coarse Focusing Stand	•	•	•
Stage	Area: 10x90mm	•	•	•
Illumination	Concave-Plano Refecting mirror	•	•	•
	Optional Electrical illuminator			

EXSP-1XT Microscope set



EXSP-2XT Microscope set



EXSP-400XT Microscope



Eyepieces:20X
Objectives:4X 10X 40X
Illuminator:Light treatment

EXSP-401 Microscope



Triple nosepiece
Eyepieces:H10X, H16X
objectives:4X/0.10, 10X/0.25, 40X/0.65
Separate fine & pinion. The rack stop prevents damage to slides & objectives.
With Illuminator.

EXSP-402 Microscope



Triple nosepiece
Eyepieces:H10X, H16X
objectives:4X/0.10, 10X/0.25, 40X/0.65
Separate fine & pinion. The rack stop prevents damage to slides & objectives.
With Illuminator.

EXSP-403 Zoned microscope



A measurement tools which make use of microscope optical system to enlarge On the line scale of sub-degree to Detailed distinctions and reading the length. It is often used as indication components of a bench comparator,, length measuring instrument and microscope .And there are several kinds of its sub-scale value ,such as10 micron, 1 micron and 0.5 micron and so on.

EXT-2A XT-2B Stereo microscope



Total magnification times: 20X, 40X
Object lens magnification times: 2X, 4X
Eye lens magnification times: 10X, 10X
Numerical aperture: 0.05, 0.07
Line field of vision: 10mm, 5mm
Working distance: 78.5, 46.7
Focusing range: 40mm, 40mm
Out shape dimension: 160×120×250mm

EJ2705-1 Dissecting microscopes



Eye lens:10X
Magnification:20
Objective Working distance:>55mm

EXSJ-1/XSJ-2 Dissecting microscopes



Eye piece:10X
Objective:2X (4X)
Magnification:20X (40X)
Objective Working distance:>25mm
Mechanical Stage:70mm×60mm

EXSJ-3 Dissecting microscopes



Eye lens:10X
Magnification:20X (40X)
Objective Working distance:>25mm



EMP-B600(750, 900)

Labmate discovery workshop microscope

This newly designed microscope is designed to make you enjoy a new and exciting adventures in discovering an unwatched fun of the living world.

Choose from 3 powers:100X,300X,750X

Features

- * Fixed 10X Eye piece
- * Rack and pinion geared focusing
- * Power indicator on rotating turret
- * 10X, 30X, 75X objective lenses
- * Stage with stage clips
- * Refecting mirror and light
- * Battery compartment (use 2 "AA" batteries, not included)
- * Horseshoe base with rubber non-skid pad.



EQH 2527

Binocular

Size: 18x16x8.5cm

Labmate discovery school microscope

Models: MP-A300(L) MP-A450(L) MP-B600
MP-B750 MP-B900



Item	Power	Lighting System	Eyepiece	Objective Lens
MP-A300	100X,200X,300X	Viewfinder	10X	10X,20X,30X
MP-A450	100X,200X,450X	Viewfinder	10X	10X,20X,45X
MP-B600	100X,300X,600X	Viewfinder electrical	10X	10X,30X,60X
MP-B750	100X,300X,750X	Viewfinder electrical	10X	10X,30X,75X
MP-B900	100X,400X,900X	Viewfinder electrical	10X	10X,40X,90X



Size: 52x35x10cm

ESTX-1200 50X-1200X

- | | | |
|-----------------------|-------------------|-----------------------|
| 1 Projector | 1 Scissors | 1 Honeybee leg |
| 1 Color fi lter | 1 Petri dish | 1 Peacock feather |
| 1 Sea salt | 1 Condenser lens | 1 Goldfi sh scale |
| 1 Gum media | 1 Acicula | 1 Fowl feather |
| 1 Shrimp eggs | 1 Scalpel | 1 Young silkworm |
| 1 Eosin | 1 Spatula | 1 Butterfl y specimen |
| 1 Methylene blue | 1 Pine leaf | 1 Tweezers |
| 1 Yeast | 1 Tilia stem | 1 Probe |
| 1 Mealie seeds | 1 Bamboo stem | 1 Eyedropper |
| 12 Blank slides | 1 Lily pollen | 1 Magnifi er |
| 1 Shrimp hatchery kit | 1 Corn starch | 2 Empty test tubes |
| 6 Blank labels | 1 Dandelion | |
| 6 Cover slips | 1 Dragonfl y wing | |
| 1 Mini slicer | | |



EQHSTX-1200 Microscope

Choose powers from: 50X-1200X

- | | |
|---------------------------|-----------------------|
| 1 Sliver berry scaly hair | 1 Eosin |
| 1 Spatula | 1 Condenser lens |
| 1 Scapel | 1 Butterfl y specimen |
| 1 Acicula | 1 Magnifi er |
| 1 Tweezer | 1 Projector |
| 1 Eyedropper | 2 Prepared slides |
| 1 Petri dish | 1 Probe |
| 1 Feather | |
| 1 Mini slicer | |
| 1 Shrimp hatchery kit | |
| 24 Cover slips | |
| 24 Blank labels | |
| 1 Sea salt | |
| 1 Gum media | |
| 1 Shrimp eggs | |



Size: 40x34x9cm

EMA1200-3PZL

Genuine all-glass lenes for superior precision
 Powerful zoom microscope with up to 1200X magnifi cation
 Sturdy metal body for lasting durability
 Features projecting hood for tracing or group viewing
 Condenser lens bulb and viewing light
 Includes accessories and specimens for hundreds of classroom experiments

EF40080EQ-A

Aperture: 80mm(3.1")
Focal length: 400mm, f/5
Finder scope: 5x24
Hybrid diagonal: 45°
Metal tripod with show motion control rod for easy vertical micro adjustment.
Most height: 135mm
Standard 1.25" accessories include
Eye piece: K6mm, K25mm



EF50070JW/M

Aperture: 70mm(2.4")
Focal length: 500mm, f/7.1
Finder scope: 5x24
Hybrid diagonal: 90°
Metal tripod with show motion control rod for easy.
Most height: 125mm
Accessory tray
Standard 0.965" accessories include
Eye piece: SR4mm, H12mm, H20mm
3X Barlow lens, T18 Erector



EF40080EQ-A

Aperture: 80mm(3.1")
Focal length: 400mm, f/5
Finder scope: 5x24
Hybrid diagonal: 45°
Metal tripod with show motion control rod for easy vertical micro adjustment.
Most height: 135mm
Standard 1.25" accessories include
Eye piece: K6mm, K25mm



EF80070M

Aperture: 70mm(2.4")
Focal length: 600mm, f/11
Finder scope: 5x24
Hybrid diagonal: 90°
Metal tripod with show motion control rod for easy vertical micro adjustment.
Most height: 125mm
Accessory tray
Standard 0.965" accessories include
Eye piece: SR4mm, H12.5mm, H20mm
3X Barlow lens, 1.5 x Erector



EF30070M

Aperture: 70mm(2.4")
Focal length: 500mm, f/4
Hybrid diagonal: 90°
Equatorial Mount with setting circles and slow motion controls on R.A and des. axes. Most height: 38mm
Standard 0.965" accessories include
Eye piece: H6mm, H20mm
3X Barlow lens, 1.5 x Erector



EF40040M-1

Aperture: 40mm(1.7")
Focal length: 400mm, f/10
Hybrid diagonal: 90°
Alu. Tripod
Standard 0.965" accessories include
Eye piece: H12.5mm, H20mm
Finder scope: 5 x 18



EF36050N

Aperture: 50mm(2.4")
Focal length: 360mm, f/7
Hybrid diagonal: 90°
Equatorial Mount with setting circles and slow motion controls on R.A and des. axes. Most height: 38mm
Standard 1.25" accessories include
Eye piece: H6mm, H20mm
3X Erector



EF40070M F36070M

Aperture: 70mm(2.4")
Focal length: 400mm, f/5.7, 360mm, f/5.1
Finder scope: 5 x 24
Hybrid diagonal: 45°
Equatorial Mount with setting circles and slow motion controls on R.A and des. axes. Most height: 45cm
Standard 1.25" accessories include
Eye piece: K25mm



EF36050

Aperture: 50mm(2.4")
Focal length: 360mm, f/7
Hybrid diagonal: 90°
Equatorial Mount with setting circles and slow motion controls on R.A and des. axes. Most height: 38mm
Standard 0.965" accessories include
Eye piece: H6mm, H20mm
1.5X Erector



EF40040M-2

Aperture: 40mm(1.7")
Focal length: 400mm, f/10
Hybrid diagonal: 90°
Most height: 38mm
Standard 0.965" accessories include
Eye piece: H12.5mm, H20mm

EQH 2040100

High-magnification Binoculars



20(40)x100 series high magnification binoculars is a precision optical instrument used for observing the targets at long distance under all kinds of climate conditions. You will feel clear, comfortable and real while viewing the target with this binoculars. Also with flexible eyepiece adjustment capability, it's available for almost all observers who have different eyesight over. So this binoculars is not only used for scenery-viewing, but also for astronomical observation, shipping, fishing, forest fire prevention, hunting, spotting, and varieties of long-distance observation activities.

EF60050M

Aperture: 50mm(2")
Focal length: 600mm, f/12
Finder scope: 5x24
Hybrid diagonal: 90°
Metal tripod with slow motion control rod for easy vertical micro adjustment.
Most height: 125cm
Accessory tray
Standard 0.965" accessories include:
Eye piece: H6mm, H20mm
3X Barlow lens



EF70060M F60060M

Aperture: 60mm(2.4")
Focal length: 700mm, f/11.6/, 600mm, f/10
Finder scope: 5x24
Hybrid diagonal: 90°
Metal tripod with slow motion control rod for easy vertical micro adjustment.
Most height: 125cm
Accessory tray
Standard 0.965" accessories include:
Eye piece: SR4mm, H12.5mm, H20mm
3X Barlow lens, 1.5X erector



EF90060EQ-A

Aperture: 60mm(2.4")
Focal length: 900mm, f/15
Finder scope: 5x24
Hybrid diagonal: 90°
Metal tripod with slow motion control rod for easy vertical micro adjustment.
Most height: 125cm
Standard 0.965" accessories include:
Eye piece: SR4mm, H12.5mm, H20mm
3X Barlow lens, 1.5X erector



EF90070EQ11-A/2

Aperture: 70mm(2.4")
Focal length: 900mm, f/12.8
Hybrid diagonal: 90°
Metal tripod with slow motion control rod for easy vertical micro adjustment.
Most height: 130cm
Standard 0.965" accessories include:
Eye piece: SR4mm, H12.5mm, H20mm
3X Barlow lens, 1.5X erector

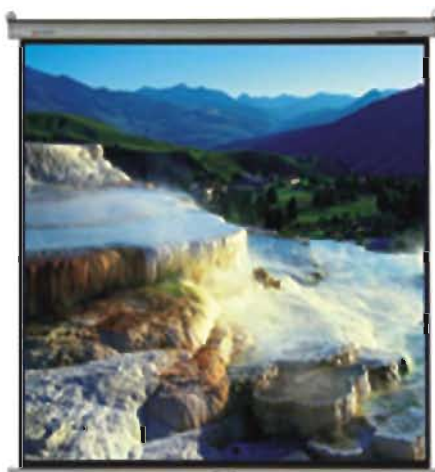


Auto-visual screen

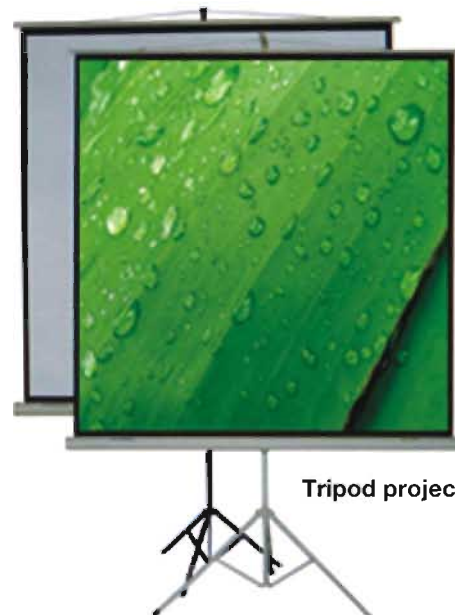
- * Tripod projection screen
- * Wall projection screen
- * Manual projection screen
- * Electric screen
- * Remote control electric screen



Electric screen



Manual projection screen
Wall projection screen



Tripod projection screen

Size w x H (m)	Type	Glass beaded screen Matt white screen						
		Wall projection screen	Manual projection screen	Electric screen	Simple screen	Tripod screen		
						ZB-B	ZG-D	ZD-E
1.24 x 1.27		✓	✓	✓	✓	✓	✓	
1.14 x 1.53		✓	✓	✓	✓	✓	✓	
1.53 x 1.53		✓	✓	✓	✓		✓	
1.28 x 1.71		✓	✓	✓	✓	✓	✓	
1.80 x 1.80		✓	✓	✓	✓		✓	
1.53 x 2.03		✓	✓	✓	✓		✓	
2.13 x 2.13		✓	✓	✓	✓		✓	
1.83 x 2.44		✓	✓	✓	✓		✓	
2.44 x 2.44		✓	✓	✓	✓			
2.06 x 2.74		✓	✓	✓	✓			
2.74 x 2.74		✓	✓	✓	✓			
2.29 x 3.05		✓	✓	✓	✓			
3.05 x 3.05		✓		✓	✓			
2.74 x 3.66		✓		✓	✓			
3.66 x 3.66				✓	✓			
3.05 x 4.06		✓		✓	✓			
3.81 x 5.08				✓	✓			
4.57 x 6.10				✓	✓			



Product description

- ABS 94V0+plastic case
- streamline design, beautiful and elegant
- PCB electric transformer
- low-noise cooling system
- reliable and convenient folded spring pole and self-lockdevice
- portable and convenient to store
- safe shut off set
- super definition change focal lens head

Specifications/Model	7800-T2G
Available Voltage	110/120/220/230/240
Lamp(V/W)	24V/250W
Lamp Type	EHJ
Lamp changer	YES
Power supply	Electric Transformer
Projection lenses(elements)	3-vario
Focal length(f=mm)	280~320mm
Condenser	YES
Working surface(mm)	A4
Foldable post	YES
Thermo cut-off	YES
Light output(lumens)	1800~2400
Colour change	NO
Net Dimensions(mm)L×W×H	480X315X520
Net Dimensions folded(mm)	485X320X130
Carton-box Dimensions(mm)	550X400X210
Weight Net/Gross(packed)	7Kg, 8Kg
20"/40"/40HQ Container/PCS	600/1200/1440



Product description

- cool steel metal case and anti-static electricity
- streamline design, beautiful and elegant
- circular transformer, high efficiency and low energy consumption
- low-noise cooling system
- reliable and convenient folded spring pole and self-lockdevice
- convenient to store and packaging
- hi-low switch
- 360°head rotation
- power shut off when top cover opened

Specifications/Model	3900-S2G	3900-T2G	3900-S4G	3900-T4G
Available Voltage	110/120/220/230/240	110/120/220/230/240	110/120/220/230/240	110/120/220/230/240
Lamp(V/W)	24V/250W	24V/250W	36V/400W	36V/400W
Lamp Type	EHJ	EHJ	EVD	EVD
Lamp changer	YES	YES	YES	YES
Power supply	Annular Transformer	Annular Transformer	Annular Transformer	Annular Transformer
Projection lenses(elements)	1-Fixed	3-Fixed	1-Fixed	3-Fixed
Focal length(f=mm)	275mm	320mm	275mm	320mm
Condenser	YES	YES	YES	YES
Working surface(mm)	A4	A4	A4	A4
Foldable post	YES	YES	YES	YES
Thermo cut-off	YES	YES	YES	YES
Light output(lumens)	1800~2000	2000~2200	3500~3800	3700~4000
Colour change	YES	YES	YES	YES
Net Dimensions(mm)L×W×H	350X420X840	350X420X840	350X420X840	350X420X840
Net Dimensions folded(mm)	500X420X280	500X420X280	500X420X280	500X420X280
Carton-box Dimensions(mm)	540X450X345	540X450X345	540X450X345	540X450X345
Weight Net/Gross(packed)	10.46Kg, 12.50Kg	10.74Kg, 12.75Kg	11.50Kg, 13.50Kg	11.74Kg, 13.75Kg
20"/40"/40HQ Container/PCS	330/660/770	330/660/770	330/660/770	330/660/770



AOXING Overhead Projector 250 Series



Product description

- cool steel metal case, anti-static electricity
- streamline design, beautiful and elegant
- circular transformer, high efficiency and low energy consumption
- low-noise cooling system
- power shut off when top cover is opened
- reliable and convenient folded spring pole and self-lockdevice
- convenient to store and packaging
- hi-low switch
- 180°head rotation

Specifications/Model	250-S2G	250-T2G
Available Voltage	110/120/220/230/240	110/120/220/230/240
Lamp(V/W)	24V/250W	24V/250W
Lamp Type	EHJ	EHJ
Lamp changer	YES	YES
Power supply	Annular Transformer	Annular Transformer
Projection lenses(elements)	1-Fixed	3-Fixed
Focal length(f=mm)	275mm	320mm
Condenser	YES	YES
Working surface(mm)	10*10"	10*10"
Foldable post	YES	YES
Thermo cut-off	NO	NO
Light output(lumens)	1800~2000	2000~2200
Colour change	NO	NO
Net Dimensions(mm)LxWxH	335X365X780	335X365X800
Net Dimensions folded(mm)	450X380X270	460X380X270
Carton-box Dimensions(mm)	495X460X320	495X460X320
Weight Net/Gross(packed)	9Kg, 11Kg	9.5Kg, 11.5Kg
20"/40"/40HQ Container/PCS	420/840/960	420/840/960

Product description

- cooling steel metal case and anti-static electricity
- reliable and convenient folded spring pole and self-lockdevice
- streamline design, beautiful and elegant
- convenient to store and packaging
- circular transformer, high efficiency and low energy consumption
- hi-low switch
- 180°head rotation
- low-noise cooling system
- power shut off when top cover opened

Specifications/Model	285-I	285-II	285-H	285-HS
Available Voltage	110/120/220/230/240	110/120/220/230/240	110/120/220/230/240	110/120/220/230/240
Lamp(V/W)	24V/250W	24V/250W	36V/400W	36V/400W
Lamp Type	EHJ	EHJ	EVD	EVD
Lamp changer	YES	YES	YES	YES
Power supply	Annular Transformer	Annular Transformer	Annular Transformer	Annular Transformer
Projection lenses(elements)	1-Fixed	3-Fixed	1-Fixed	3-Fixed
Focal length(f=mm)	275mm	320mm	275mm	320mm
Condenser	YES	YES	YES	YES
Working surface(mm)	A4	A4	A4	A4
Foldable post	YES	YES	YES	YES
Thermo cut-off	YES	YES	YES	YES
Light output(lumens)	1800~2000	2000~2200	3500~3800	3700~4000
Colour change	YES	YES	YES	YES
Net Dimensions(mm)LxWxH	400X370X860	400X370X860	400X370X860	400X370X860
Net Dimensions folded(mm)	490X400X270	490X400X270	490X400X270	490X400X270
Carton-box Dimensions(mm)	540X450X345	540X450X345	540X450X345	540X450X345
Weight Net/Gross(packed)	10.71Kg, 12.6Kg	10.85Kg, 12.78Kg	11.44Kg, 13.5Kg	12.0Kg, 14.0Kg
20"/40"/40HQ Container/PCS	330/660/770	330/660/770	330/660/770	330/660/770

EQH 1301 Video projector



EQH 1301-1 Video projector

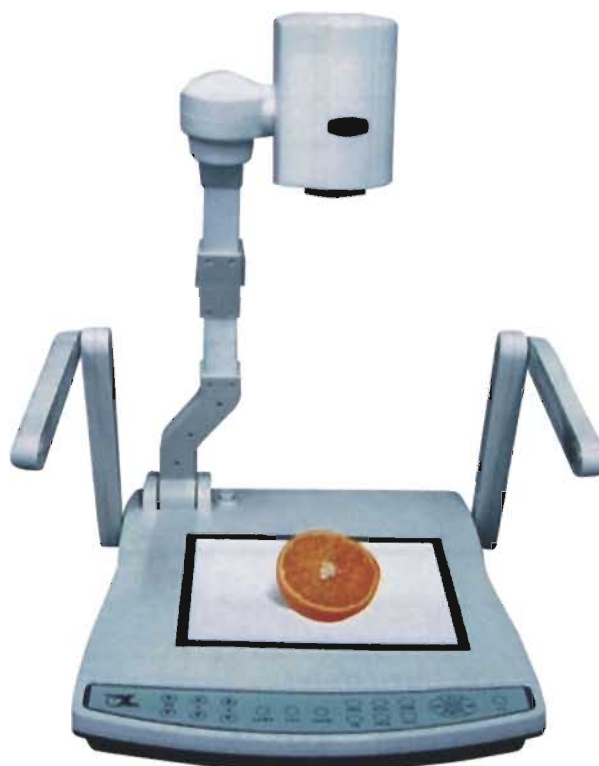


The Visual Presenter \Videofrequency usher desk
The Visual Presenter is a full-automatic multifunction visual presenter.It captures all types of presentation materials,such as papers,3-D objects , transparencies , etc.

EQH 1301-2 Video projector



EQH 1301-3 Video projector

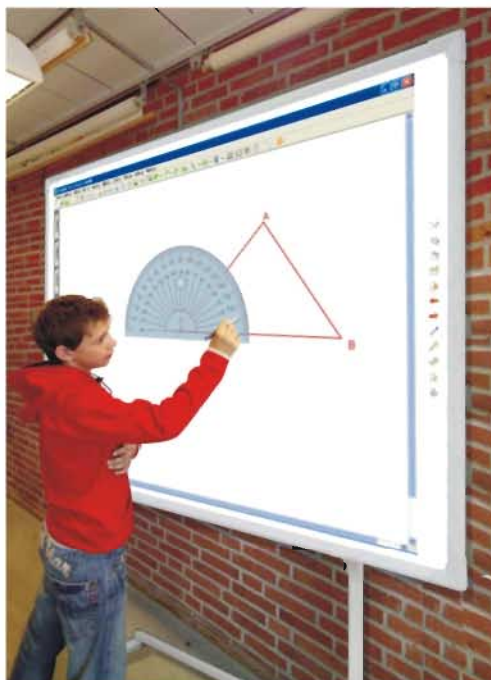


Interactive Whiteboard

IPBOARD can function as an ordinary whiteboard. When connected to the computer and the projector it turns into an interactive whiteboard that operate the PC in every aspect. It can be widely used in classroom teachings, business meetings, training courses or presentations in different circumstances.

With the electromagnetic sensing technology you can directly control applications from the whiteboard, write or draw on the surface, annotate over any PC software while it's running, save the annotations for later discussions, print, save or distribute the finished information.

IPBoard can replace the traditional whiteboard & blackboard, the projection screen, the flipchart and the copyboard completely and help you to increase interactivity improve efficiency and save time greatly.



Dimension & Weight

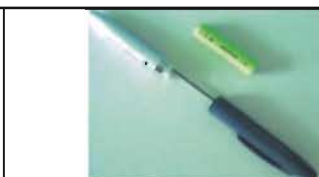
Model	Board Diagonal (Inch)	Active Diagonal (Inch)	Active Writing Area (mm) ±5mm	Packing Size (cm) ±2cm	Net Weight(KG) ±1Kg	Gross Weight(KG) ±2Kg
EJL-8500C	88	50	1028x733	149x108x15	12	24
EJL-8500F	77	67	1380x1010	176x149x17	20	39
EJL-8500H	88	76	1575x1115	201x149x15	22	44
EJL-8500K	100	90	2020x1120	244x147x16	26	50



Mobile Floor Stand



Outer Frame



Electronic Pen



USB-RS232 connecting cable

APPLICATIONS

- . Classroom teaching
- . Corporate training
- . Meeting room presentation
- . Group collaboration
- . Distance learning
- . Multi-site conferencing
- . Brainstorming

Specifications

- . Operation System: Win98/Me/2003/2000/XP
- . Transmission Interface: RS-232C/USB
- . Resolution: 4096x4096

- . Baud rate: 1920bps
- . Technology: Electromagnetic sensing
- . Power Supply: USB Power Supply: DC 5V 100Ma Or Powered by External 5V adapter

- . Powered by exclusively used adapter
- . Input: AC 220V 50Hz
- . Output: DC 9V
- . Battery for electronic pen: 1.5V AAA alkaline battery
- . Working Temperature: -20C° - +55C°
- . Power capability: <7W

FEATURES

Simplicity: Easy to use. No need for professional training. All functions including writing, erasing, drawing, replaying, saving, printing and e-mail etc. Will be done simply with an electronic pen on the whiteboard. Easy installation with mobile floor stand or wall-mount tool in different circumstances.

Reliability: CE & UL approved. Originally innovated, comprehensively tested and approved by the National Ministry of Science and Technology and the National Computer Test Centre.

Durability: Durable surface and stable hardware & software brings the IPBoard long life span. Environment-friendly surface material brings super low glare.

CAPABILITIES

Mouse Function Controlling your computer in full range

Writing Function Writing in Normal Pen, Brush Pen & Transparent Pen on the IPBoard at will

Drawing Function To draw lines, triangle, square, circle, the rectangle etc.

Supplementary Presentation Tools The eraser, copy & paste, spotlight, magnifier and local editing function enable you to push forward the key points easily.

Backgrounds You can use a whiteboard, a blackboard or the customized templates as the background under different circumstances.

Resource Bank the huge amount of resources enable your presentation more interesting and interactive, you can also create your own sources for practical uses.

Long-distance Communication Used in net-meetings, IPBoard enable you to share your notes and data with remote groups and can create a truly interactive video conference.

Replay, Saving, Print & E-mail You may replay all the lecture notes, save the notes in the formats of PNG, JPG, BMP or HTML, you can print them or share them via e-mail.

Sound Record, Screen-capturing & OCR (with third-party software) – you can keep the complete audio & video history in the learning & training.

BENEFITS

Create an interactive teach-and-learn environment delivering multimedia materials to the whole group, thus giving a stronger sense of involvement to the students and improving their understanding and knowledge retention.

Deliver your presentations in a new and stimulating way which enhances the attention & understanding of the audience.

Make your net-meetings or other modes of remote communication really interactive.

Record all screen activities in the PC automatically, remove the trouble of notes-taking.

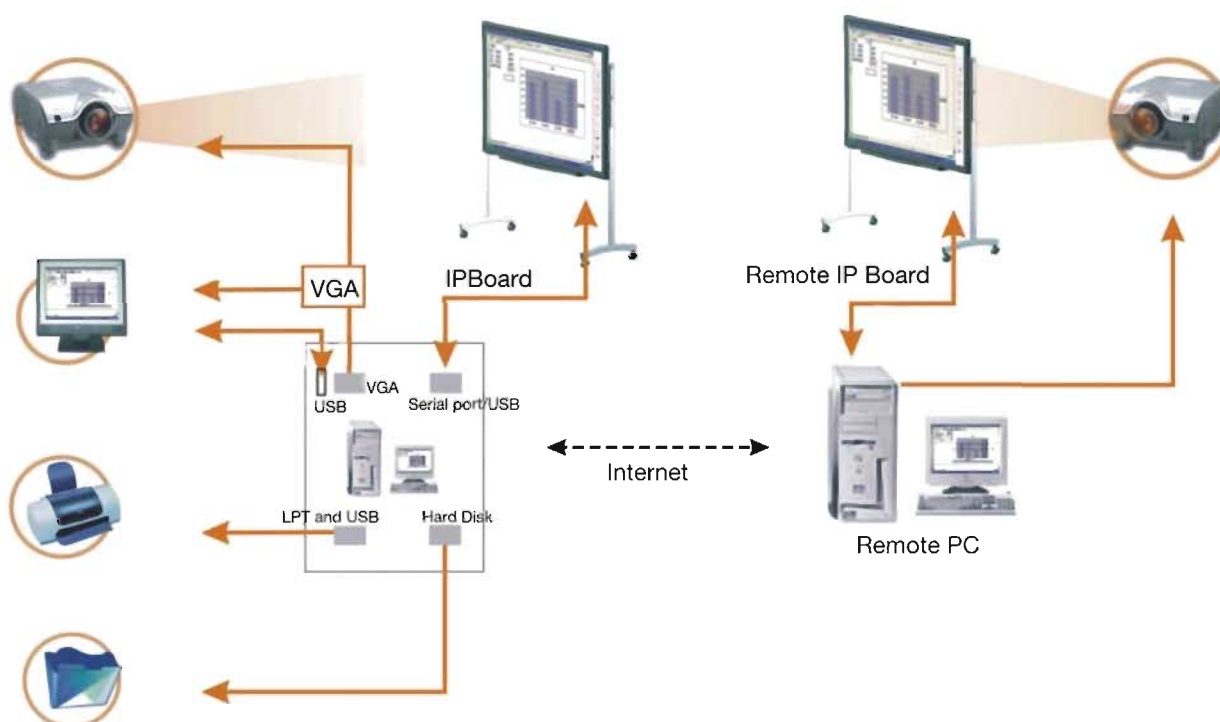
Capture brainstorming process for data sharing anytime

Annotate over computer generated images and capture them for future use.

Durable surface material suitable for daily classroom use.

Brilliant image quality, large viewing area up to 100 diagonal.

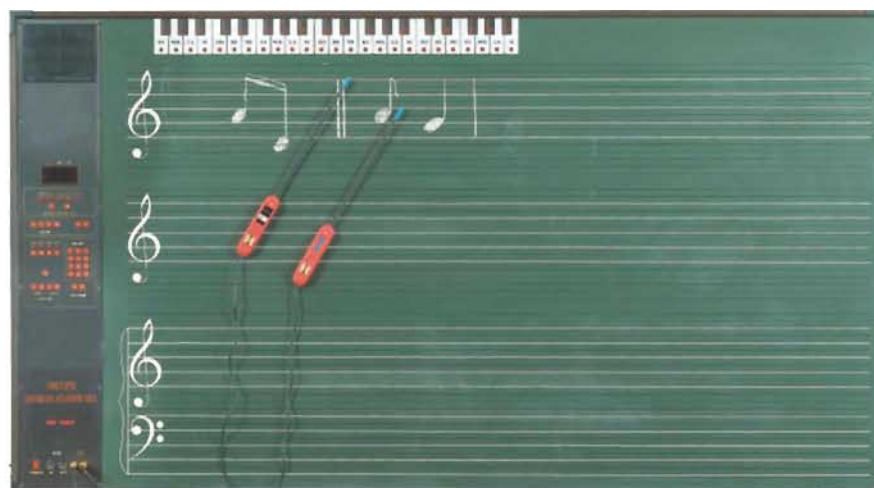
Competitive price with long warranty.



EGV808T & EGV808T-1 Electronic Teaching Board

GENERAL DESCRIPTION

Educap EDM-1100 and EDM-1200 Electronic Teaching Board is an advanced appliance for musical education. It integrates the music book, sound and light, creating a direct-viewing audio-visual combination. The five-line staff is printed on the dark green area of the Board. Use ordinary chalk to write the note or music book on the area, or use the special pointer to point at the note or music book, you can hear beautiful tone or melody. Through the light given out from the keyboard, you can see the name and position of the note that is playing on the keyboard. The Board also provide the functions of musical keys, memory, recording, tempo, rhythm, demo, etc. The Board can be used to teach or demonstrate the basic music theory such as five-line staff, note name, scale, pitch interval, musical key, key signature, tone, tempo, keyboard, harmony, chord, etc. Teacher can use the Board to give lessons and students can use it to practice. The board will make the musical education more vivid and interesting. The Board can used in formative musical education for little children, basic music theory education for elementary and/or middle school students, music theory studies for university students and other kinds of education for various people. It helps promote the musical education by lifting teaching standards and speeding up the teaching schedule.



MATTERS NEED ATTENTION

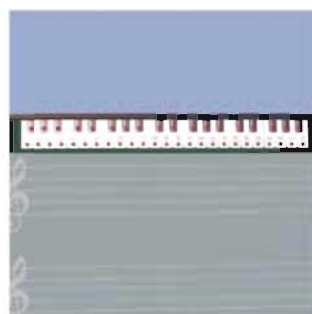
- 1, To make sure safety, the expansion bolt used for installation should be able to bear 50kg of weight. It is preferable to fix some lug bolts that can bear the same weight below the Electronic Board in order to support the board and prevent it from slipping or dropping.
- 2, The pointers should be taken good care of. Please do not use great force to bend or whack it.
- 3, Use the board eraser or wet cloth to clean the surface of the Electronic Board. Please do not wash or scratch it.
- 4, The product should be placed in dry and airy place. Please keep it from wet places and do not press it.
- 5, To restart the machine, wait for more than 5 seconds after the turning off. Otherwise, the machine may operate improperly.
- 6, Should any err or breakdown occurs, please contact the dealer or producer and ask for the professional to fix it. Please do not try fixing it on your own. Otherwise, the problem may become more serious and even lead to danger.
- 7, To problems relating to product quality, the product carries a warranty for three years.



master volume key



MIDI output/input jack



keyboard

note name indicator light



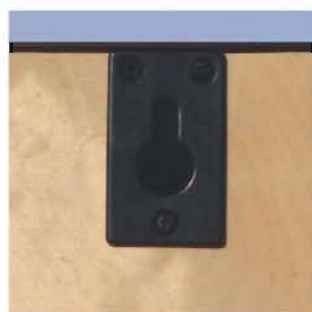
five-line staff



pointer input socket



earphone jack frequency output jack frequency input jack



fixing hole



wireless microphone



left speaker/10W



right speaker/10W



pointer



musical keys light



chord memory key

record/play key



rhythm light

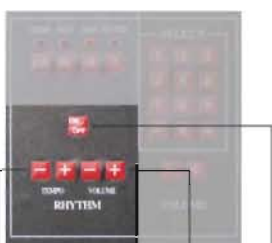
digital display



functional option key



number keypad



rhythm speed key

rhythm volume key

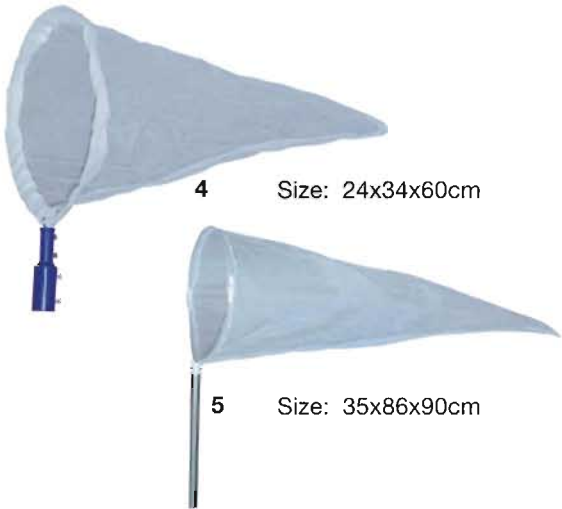
start/stop key

SPECIFICATIONS

Range.....	F-b2
Pitch.....	a1= 440Hz
Preset timbres.....	119 General MIDI Sounds and 9 national instruments
Preset Rhythms.....	50
Tempo Type.....	7 (2/4,3/4,4/4,5/8,6/8,7/8,9/8)
Tempo Speed.....	Adjustable: 30-240 Beats Per Minute
Recordable Chord.....	3 groups
Manual Demo Music.....	10
Manual Semitones Up or Down.....	OK
Built-In Speakers.....	10W+10W (Output 7.5W + 7.5W)
HEADPHONES Jack.....	1
LINE IN Jack.....	1
LINE OUT Jack.....	1
MICROPHONE IN Jack.....	1
MIDI IN.....	1
MIDI OUT.....	1
Power Sources.....	AC: 220V,50Hz
Power Consumption.....	<30 W
Dimensions (HWD).....	100X1800X6 (cm)
Weight.....	<25kg

NETS

www.edustore.com.tr



4 Size: 24x34x60cm

5 Size: 35x86x90cm



EQH 2352 Nets

EQH2353-2 Insect bottle

Size: 7.5x7.5x8cm



EQH2353 insect bottle

Size: 6cm



EQH2353-5 Insect bottle



EQH2355 Special vase



Size: 10cm

EQH2353-4 Insect bottle



Size: 5cm

EQH2353-1 Insect bottle



Size: 7.5cm



EQH81104-1 Bug barn

Collect and observe bug specimens in the viewing barn. Analyse them with your high-powered magnifier, observation room, tweezers, canister and net.

Size: 24x16x18cm

EQH2078 Dissecting instrument (7pcs)



Size: 17x11x1.8cm

EQH2078-1 Dissecting instrument (5pcs)



EQH2078 Dissecting instrument (13pcs)



EQH2725-1 Plastic slicer



Size: 7x7x2.5cm

EQH81104-2 Scientific Detective Kit



Size: 25x20x7cm

This kits contains lots of equipment that will allow your child to carry out their own experiments. Using the booklet, you will go step by step through the many ways in which detectives use science to help solve crime, including using microscopes, finger printing, secret messaging and cromatography.

EQH2725 Metal slicer



Size: 10x10x8.5cm

This instrument is used to make the slide in the science class.



EQH2621

Stainless Distiller Series

Summary of function

Condensation of the steam with heat exchanger is the only most reliable way to get high quality distilled water at present.

The stainless distillers produced in our factory conform to the principle above. Our factory is the earliest producer of stainless distiller in domestic. The product series are made of high grade stainless steel, and operated easy, their structure are preciseness. The water produced from the instrument conforms to the standard of pharmacopoeia(2000 edit).

The products are applied to medical, pharmaceutical, scientific research, chemical engineering as well as food industry, and they are ideal equipments for high quality distilled water.

Model	Prodycubg caoacutt	Power supply	Power	Weight	Dimension(mm)
EQH2621-5B	5L/h	220V	4.5KW	13Kg	390×280×750mm
EQH2621-10B	10L/h	380V	7.5KW	13Kg	390×280×800mm
EQH2621-20B	20L/h	380V	15KW	18Kg	500×400×970mm



EQH2707

Electrothermic drying oven

Temperature Range: room temperature+5°C~200°C or +5°C~300°C

Temperature fluctuation: ±1°C

Temperature homogeneity: ±3.5°C

Max surface temperature: room temperature +35°C

Working power: 220V/50Hz

Operating Temp: 5~40°C

Relative humidity: ≤80%

Model	Working size	Packing size	G.W./N.W.(kg)	Rated Power(W)	Remarks
	LXWX H (mm)	LXWX H (mm)			
EQH2707.200	200X200X250	410X410X620	19/17	0.3	
EQH2707.300	300X300X340	540X510X700	40/27	0.6	
EQH2707.400	400X400X400	620X600X770	55/45	1	
EQH2707.450	450X350X450	790X600X860	74/46	1.5	Set the blast device
EQH2707.550	550X450X550	940X690X920	100*64	3	Set the blast device



EQH2714

Low Temperature Incubator

Temperature Range: room temperature+3°C~60°C

Temperature fluctuation: ±0.5°C

Twice heat difference: ≤8.0°C

Temperature homogeneity: ±1.0°C

Leakage current: ≤0.5 mA

Working power: 220V/50Hz

Operating Temp: 5~40°C

Relative humidity: ≤90%

Air pressure: 86~106Kpa

Model	Working size	Packing size	G.W./N.W.(kg)	Rated Power(W)
	LXWX H (mm)	LXWX H (mm)		
EQH2714.200	200X200X250	410X410X620	19/17	150
EQH2714.300	300X300X340	540X510X700	40/27	300
EQH2714.360	360X360X420	590X560X770	55/45	300

EQH 1015 Stroboscopic light source facility



Simple Stroboscope Uses

This instrument can provide continuous stroblashfor cameras to take photos of a moving object for researching the law of motion.

Characteristic: This apparatus is controlled by a single chip processor. It can provide several kinds of stroblash (5, 10, 20, 25, 30, 40, 50 Hz) for cameras to take photos.

Matching Equipment: Camera

Power Source: 220V AC Power source

Size: 20 x 12 x 7 cm

EQH 1016 Simple Stroboscope



Size: 20 x 15 x 18 cm



EQHWL 4120 Faraday Perpetual Flashlight

A new torch using the principle of Faraday's law of Induction that never needs batteries. Shaking the torch passes a magnet through a copper coil which creates an electric current. This current is then stored in a capacitor which powers an ultra bright LED which can be seen for up to a mile. After an initial 3 minutes shake to get it going, the torch then only requires 45 seconds of shaking to provide enough electrical energy to power the LED light for up to 5 minutes.

Size: 25.5 x 5.5 x 5.5 cm



EQH 2518-1 Magic Illusion

A fasination 3-dimensional virtual image appears when a object is placed in the two concave plastic mirrors lying on top of each other.

Size: 22.5 x 7cm



EQH 1016-1 Hand Lamp

Tough outdoor hand lamp with emergency warning light. Made from dirable plastic with a krypton for a brighter beam.

Size: 20.5 x 14 x 15.5cm



EQH 2528 Demonstrator of refraction & reflection of light

Size: 25 x 18 x 40cm

EQH 25013 Tricolor experimental device



size:3.3x6.5x10cm

EQH 10001 Epidiascope



size:29x12x22cm

EQH 2512 X-Ray demonstrator



X-Rays demonstration instrument The X-rays tube in this instrument is specially made to produce a kind of soft X-rays and the constructure of this instrument is wholly sealed. Without any darkroom facilities, one can observe the X-rays features safely and effectively through the lead-glass window. The features include penetration, fluorescent function, photosensitivity, and biological function, etc.

EQH 2519-1 Tricolor experimental device



This instrument is composed with three colors: red, green, and blue. Power supply: AC220V \pm 22V 50Hz
Work environment:
Temperature: -10°C to 40°C
relative humidity: not greater than 90%
Size: 12x8x7cm

EQH 2471 Large-screen oscilloscope



Frequency: 50Hz
Power: About 40VA
Size: 38.5x35x32cm

EQH 2501 Geometrical optics demonstration



This instrument is used in the demonstration of geometrical optics, can show mirror reflection, diffuse reflection and so on. The light through the prism can make refraction and total reflection. And also illustrated the optical properties of the concave and convex mirror. Optical instrument experiment demonstration, rectification of the myopic eye and presbyopia and so on.
Size: 75x24x37cm

EQH 2507 Optical bench

Specially designed optical bench for your optics experiments, 125cm in length. This didactic design gives the possibility of orientation of lenses and mirrors as well as the achievement of a centered system. Composition: 1 bench, 1 lantern with lamp, 5 accessory holders, 1 letter object, 1 set of 3 diaphragms, 1 screen, 1 screen holder, 4 convex lenses, 2 concave lenses.
Size: 101x12x7cm



EQH 2508

Demonstrator for optical interference , diffraction and polarization



This is an important instrument for demonstrating interference ,diffraction and polarization of light in a middle schoole physics laboratory . An intense source of parall light is formed by means of the light system with a 12V50W halogen tungsten lamp. Demonstrations of interference , diffraction and polarization may be effectively performed even in an exposed classroom . Size: 103 x 26 x 34cm

EQH 2528-1 Experiment of light refraction and reflect



Except measure the refraction index of the liquid,it also can look into electrophoresis of light lines refraction, echo and total reflection from any direction by different medium.

Flume:Made of transarence organic glass.Dia:160mm.

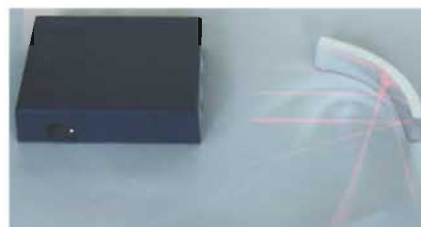
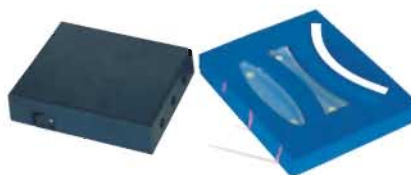
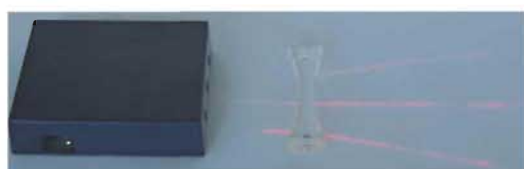
Dial:Made of white organic glass.Dia:160mm

Lamp-house:Semiconductor laser linearis lamp-house.wave lengh 650nm

Outline border of the lamp-house:A whole shape made of platic have spire switch,fixup on circumrotate iron sheet by magnet.can 3600 round and orientation along the lamp-house.

Base:Made of organic glass,have four volution by hand.

EQH 2506-1 Experiment of optic lens



This instrument is demonstrated the light shine through the light splitting hole to the medium, then we can see the transmit form of the light for the medium.



EQH 2506 Optical blocks

Made of clear or forsted glass, or clear forsted acrylic



EQH 2590-1 Mirror Set

Including:
Concave mirror;convex mirror;semircular
mirror;triangular prism



EQH 2511 Triple prism with stand

Size: 15 x 10 x 15cm



EQHX2590

Biconvex Lens and Biconcave



EQH 271-5
Base magnifier



EQH 271-1
Industrial folding magnifiers



EQH 271-3 Magnifier



EQH 271-6 Magnifier



90mm 75mm 60mm 50mm

EQH 271-7 Magnifier

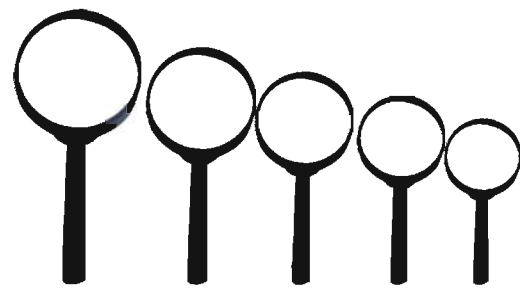


EQH 271-8 Magnifier



90mm 75mm 60mm 50mm

EQH 271-9 Magnifier



100mm 90mm 75mm 60mm 50mm

EQH 271-4 Magnifier



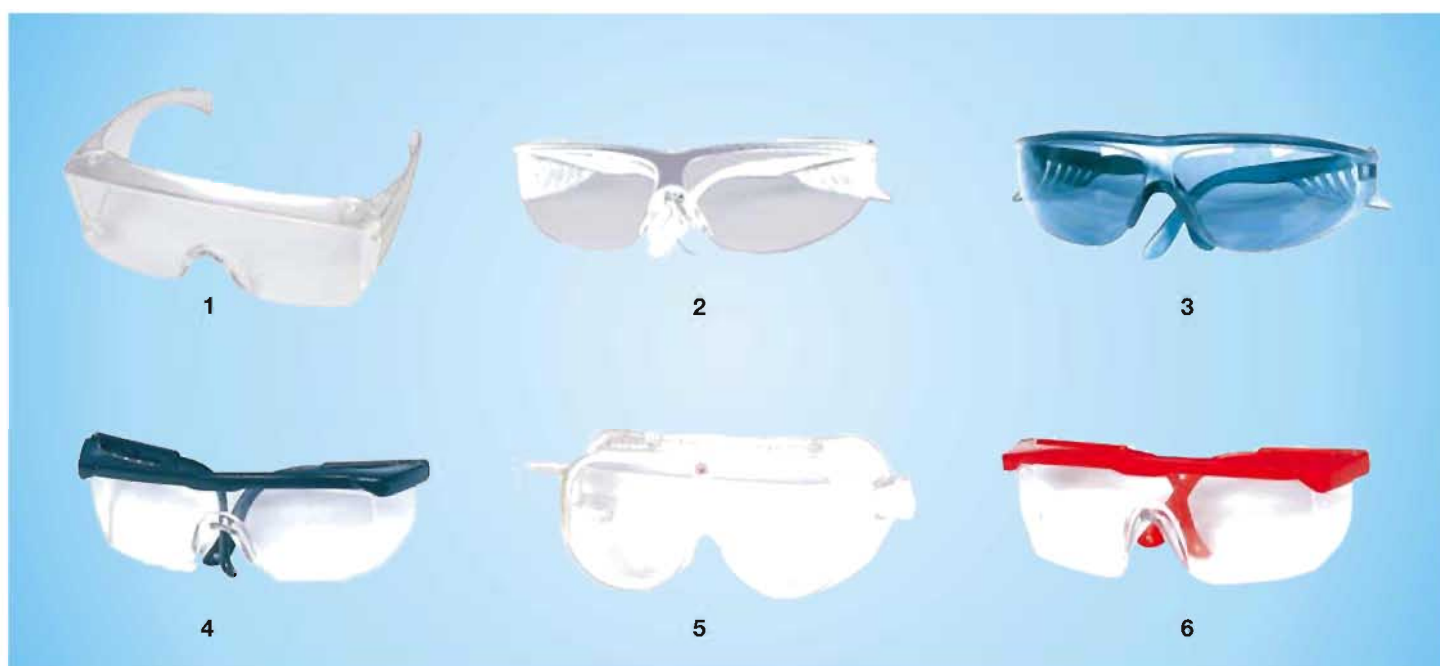
90mm 75mm 60mm 50mm

EQH 271-10 Magnifier With Wooden Handle



90mm 75mm 60mm 50mm

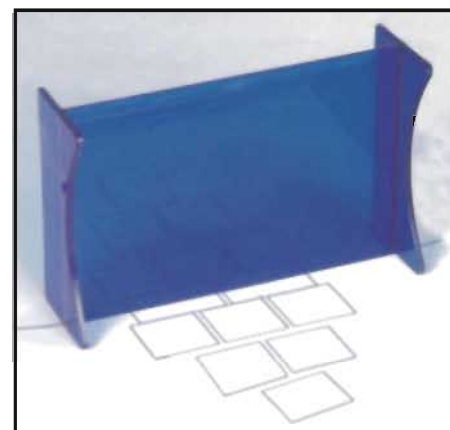
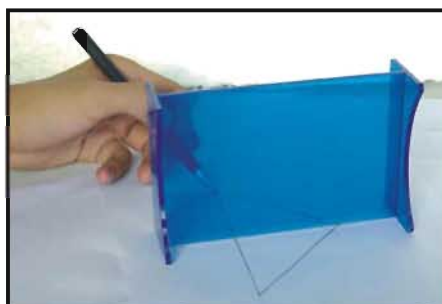
EQH 271-11 Magnifier with light



EQH 2641 Safety Glasses

Direct vent impact resistant goggles with polycarbonate lens

EQH 3010 Symmetry mirror



A simple but effective device for demonstrating the symmetrical nature of plane surface reflection. It consists of a tinted Perspex screen, 145*95mm, provided with side supports. If the mirror is placed on a sheet of paper with an object in front of it, the reflected virtual image is seen in the usual way. However, unlike a normal mirror, the transparent Perspex permits real objects in the area apparently occupied by the image to be seen also. It is therefore possible to make accurate measurements on, or trace around the virtual image and thus demonstrate the symmetry that exists.



EQH2521-1 Laser optical demonstration instrument

The laser optical demonstration instrument is a kind of modern instrument. It takes He-Ne laser as its light source. After passing through a cylindrical lens, the light beam diverges into sector shape and shows its path on the screen. About 70 kinds of geometric-optics experiments can be demonstrated by this instrument with clear images and vivid intuitive effects. The demonstrations demand no darkroom facilities. size:42x14x40cm



EQH2551-1 Spectrometer

It is used for the measurement of angles in the experiments of reflection, refraction, diffraction and interference. It can be used with Elliptical polarimeter.

Specification:

Reading precision:1'

Include the accessories:6.3V transformer, parallel slab with stand, Hand illuminated magnifier,grating with a stand, equilateral prism($n_d+1.6475$, $n_f-n_c=0.01912$)

EQH 2523 Experiment box of optic



size:29x13.5x

EQH2560 Thin slit spectroscope



This spectroscope allows the observation of 1st and 2nd order spectrums. It consists of a metallic tube with a thin slit of 0.25mm and a grating slit of 300 lines/mm. No presence of internal reflexions.

EQH 2523-1 LED light array



Interactive apparatus designed to demonstrate that different colours correspond to different wavelengths. Eleven LEDs, spanning the visual spectrum, are arranged and fixed in a robust structure for viewing through a diffraction grating. The product has a number of applications from viewing the first and second order fringes through grating to working out the wavelengths of light using simple calculations. size:15x12x30cm

EQHX 2519 Compound Color Demonstrator



There are three different colored lamps blue, green and red. To demonstrate that different color and distance of light superposed on the board compound to other colors. size:12x15x29cm

EQH 2551 Spectroscope



The type QH25511 spectroscope is one of physical experimental instrument in a middle school. It may be used to illustrate construction of the spectroscope, observe continuous spectrum, bright line and absorption spectra, and measure the wavelength of spectral line and planck, etc. Size: 26 x 26 x 25cm

EQH2555

Projection device for absorption spectrum of sodium

This device is a demonstrator for absorption spectrum of sodium in a senior high school. It may be used in combination with Type J2508 demonstrator for interference, diffraction and polarization of light. The line spectrum is observed clear and stable. The device ensures a good performance. size:19x14x21cm



EQH 2477-1 Microcurrent Amplifier



Working voltage:DC3-4.5V
Multiple:7-800X
Static current:1mA
size:21x20x7cm

EQH 2464 Teaching signal generator



produce high frequency signal, high frequency modulate signal, low frequency signal and ultralow frequency multi-functional signal generator of signal Low frequency signal part of instrument have sawtooth wave, square wave and sinusoidal wave 3 wave form export. size:22x15x15.5cm

EQH 0423-1 Teaching Q meter(High frequency)



size:22.5x11.5x15.5cm

EQH 2461 Transistor characteristic curves display



It can demonstrate ocularly on the oscillograph fluorescent screen that the small power transistor, characteristic curve of the diode form a cluster. size:21x14x17cm

EQH 0201 Multi-digital calculagraph



Integrated circuit,numeral show for counting number 9999 times,counting time from 0 to 99.99 seconds.countiong weekl from 0 to 9. size:21x17.5x9cm

EQH 2469 Teaching sweeper



Instrument produce 20Hz~30KHz low frequency, sweep signal and 450KHz~480KHz intermediate frequency, sweep signal. use with the oscillograph together, can measure the low frequency of various kinds of electronic circuit networks and loud characteristic frequently of intermediate frequency directly. size:22x14.5x15.5cm

EQH 2470-1 Three-phase electronic



size:22x14.5x11.5cm

EQH 2462 Signal generator low frequency



It is that one kind can produce and export sinusoidal wave, the trigonometry wave, square wave and three kinds of waves at the same time Shape , and is exported the signal generator of low frequency of the frequency of the signal by 6 persons of digital display. size:22x15x15cm

EQH 01310 Digital thermodeetector



Frequency response:DC~5MHz
Deflection factor:≤20mVpp/div
Sweep frequency:10Hz~100kHz
Calibration signal:100mv±5%
CRT Screen size:13cm
size:21x20x7cm

EQH 0423-2 Teaching Q meter(low frequency)



size:22.5x11.5x15.5cm



EQH 2482
Experiment of transducer arithmomter
Size:19x13x9 cm



EQH 1010
Frequency spark counter
Size:14x6.5x6 cm



EQH 1202
Student power supply
stable voltage output 2V-4V-6V,3scales
Size:16x15.5x15 cm



EQH 2477
Micro-current amplifier
Size:14x9.5x9.5 cm



EQH 1202-4
Student power supply (Juniormiddle school)
DC constant voltage
1.5V-12V.Total 8 ranges
Currenty 1.5A Self-protection.



EQH 2485-2
Students signal source
Size:24x13x10 cm



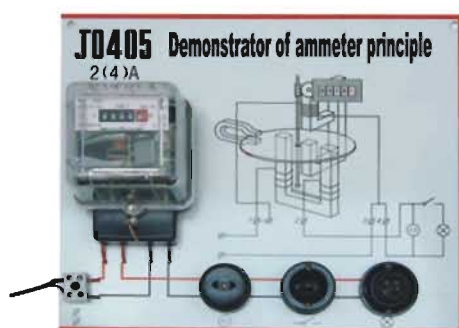
EQH 2469-1
Teaching sweeper
Size:22x15x15 cm



EQH 1202-2
Student power supply (Senior middle school)
AC 2V-16V total 8 ranges Currenty 3A DC
constant voltage 1.5V-16V total 16 ranges
Currenty 2A Self-protection.



EQH 0206
Electronic metronome
Size:20x15x10 cm
Atiming instrument with synchronous
display of sound and light beat
frequency:20, 40, 60, 80, 100, 120, 140,
160, 180, 200 beats perminute,
in10 ranges,with an adjustable
range paner supply:220V/50HZ



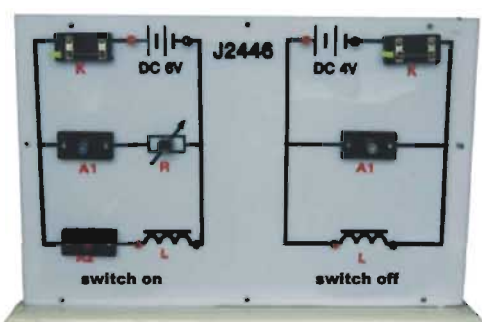
EQH 0405 Demonstrator of ammeter principle

It is suitable for middle schools and polytechnic schools to measure electric energy in the AC circuit in teaching experiment and to demonstrate the principle of watt-hour meter.
Size:39.5x33x9 cm



EQH 2320 Positive and negative electric charge inspector

Size:15x13x11 cm



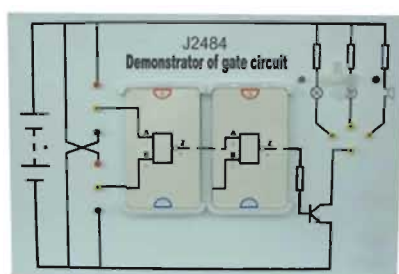
EQH 2446 Self inductance electrophoresis

Size:53x15x35 cm



EQH 2321 Conductor insulation inspector

Size:13x7x8 cm



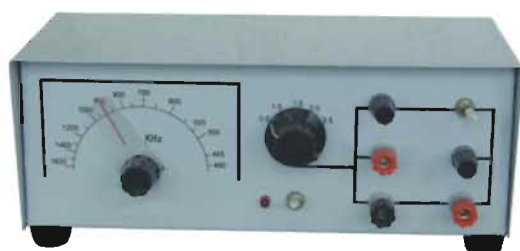
EQH 2484 Demonstrator of gate circuit

Size:68x11x45 cm



EQH 2602 Digital PH meter

Size:14.5x12x6 cm



EQH 2485-3 Students signal source

Size:24.5x12.5x10 cm



EQHS 1202-1 DC power supply

Size:14.5x12x6 cm

EQH 2463

High-frequency signal generator



It is high-frequency signal of a kind of production, special-purpose signal source of modulating the signal, low frequency signal of high frequency.
size:23.5x13x13.5cm

EQH2459

Student oscillograph



Frequency response:DC~2MHz
DC~5MHz
Ddfl action factor:50mVpp/div \pm 10%
Sweep frequency:10Hz~100Hz
CRT screen size:8cm

EQH 2458

Teaching oscillograph



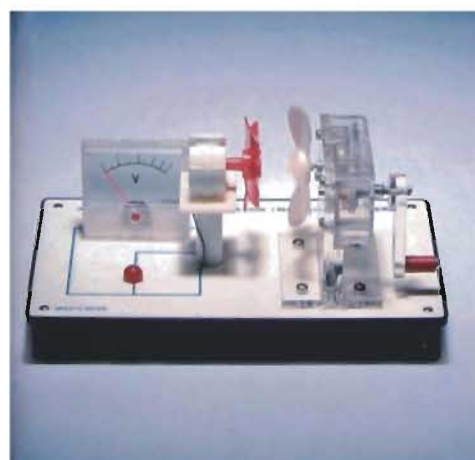
size:28x13x20cm



Power supply

Art No.:30102.10

AC/DC,2-12v,1v/step.Digital display



Wind Power generation model, manual

Art No.:20185.02

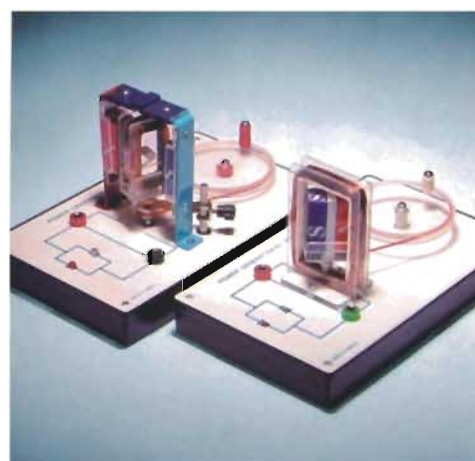
For demonstration the energy of wind can be converted to electrical energy.



Power supply

Art No.:30102.20 AC/DC, 2-12v, 2v/step.

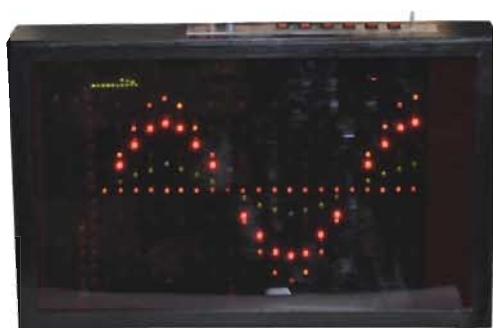
With overload protection. Input power: 220v/50Hz



Power supply

Art No.:30102.20 AC/DC, 2-12v, 2v/step.

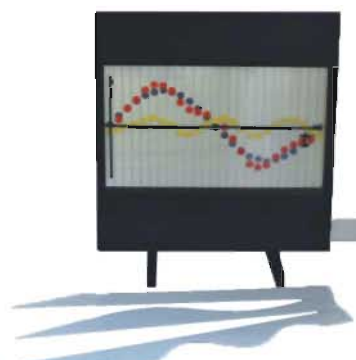
With overload protection. Input power: 220v/50Hz



EQH 2223

Demonstration for the wave synthetic

This instrument can let the students observe the synthetic of two line wave which is same phase, same frequency, different range, and also can demonstrate the special shape of stationary wave.



EQH2223-1

Vibration performance of synthetic Demonstrator

Basically including the entire contents of high school physics, About the synthesis of vibration and superposition of waves. It can be used for mathematics teaching, demonstrating the superposition sine, cosine trigonometric functions.



EQH 2217 Sound's frequency tester



EQH0701-A

Electrostatic Explore Experiment Device

The whole set product consists of Electric Generator And Electrostatic Experiment Device

Safety instruction:

1. The circuit designed to be a regular electricity power with high resistance. Generated high voltage electrostatic controlled around 40000V, Generated electricity controlled under 0.5mA (Attention: 50mA electricity passed through human bodies will cause danger to life)

2. Used with 4 pieces 5# dry battery, power lower than 3W (Lower power supply to ensure the user's security)

Usage

The whole set experiment teaching contains the common knowledge of electrics, the harm of electrostatic, how to prevent electrostatic and how to apply the electrostatics in industry and our daily life.



EQH2453-1

Cathode Ray Tubes, with Slit

To demonstrate the deflection phenomenon of cathode ray in electric field.



EQH2453-2

Cathode Ray Tubes, with Maltese Cross

To demonstrate cathode ray deflections in magnetic field.



EQH2453-3

Cathode Ray Tubes, with Paddle Wheel

Art No.20519.03

To demonstrate the cathode ray has kinetic energy that makes the paddle wheel rotate.



EQH2453-4

Cathode Ray Tubes

To demonstrate that cathode ray moves along a straight line & can be stopped by metal baffle.



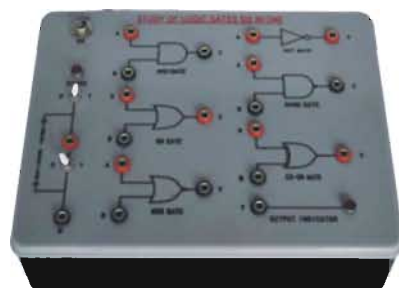
EQH NAB2 (18) Ohm's Law
Resistance in Series (Parallel) apparatus consists of two D.C. Meter



EQH NAB2 (11)
Ohms law apparatus



EQH NAB1 (6)
Zener diode with D.C. meters regulated power supply forward/reverse bias



EQH NAB1 (7)
Logic gates using integrated circuits, NOT, AND, OR, NAND, NOR and EX-OR gates-Electronics kit/Trainer(5 in one)



EQH NAB1 (5)
Diode characteristic apparatus forward & reverse bias-four D.C. meters & 2D.C. power supplies



EQH NAB1 (3)
Transistor characteristic apparatus NPN CE mode



EQH NAB1 (2) OP-AMP
OP-AMP&Logic power supply(15V&+-15V,ampere)variable with digital voltmeter & over load short circuit protection



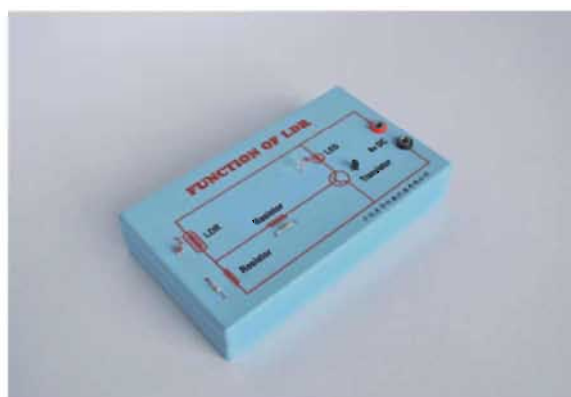
EQH 2368-2
Resistor



EQH 2368-3
Inductor



EQH 2368-4
Transistor



EQH 2368-5
Function of LDR



EQH 2368-6
Gear Function Sliding Action



EQH 2368-7
Resistance



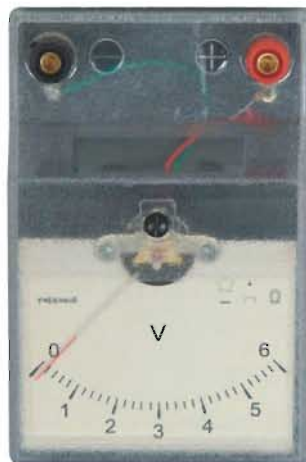
EQH 2368-8
Diode as rectifier (half wave rectification)

EQH 0407-1 DC Amperemeter



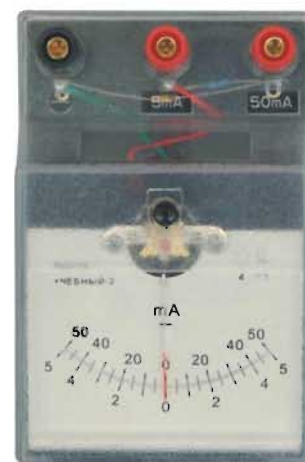
It's used for doing experiment, for measuring current of DC circuit.
Size: 12 x 8 x 5cm

EQH 0408-1 DC Voltmeter



It's used for doing experiment, for measuring voltage of DC circuit.
Size: 12 x 8 x 5cm

EQH 0409-1 DC Milliammeter



It's used for doing experiment, for measuring micro current of DC circuit.
Size: 12 x 8 x 5cm

EQH 0410-1 Multimeter



Size: 18 x 10.5 x 3.5cm

EQH 0410-2 Multimeter



Size: 14 x 11 x 4.5cm



EQH 0411 Multimeter

Multimeter model QH0411, is the rectifier instrument with high-sensitivity, multirange. It has 24 ranges. It is suitable for middle schools and polytechnic schools to measure AC or DC voltage, DC current, DC resistance and level in the teaching experiment.
Size: 13.5 x 9.5 x 3.5cm



EQH 0410 Multimeter

Multimeter model QH0410, is the magnetic-electric rectifier instrument, with 17 basic ranges. It is a multirange instrument, specially provided for teaching experiment to measure DC voltage, electric current, resistance, and AC voltage.
Size: 15.5 x 18 x 7cm

EQH 0402

Demonstrating electric meter



The model is comprised of inner magnetic structure and measuring circuit. It has such excellence as convenience for usage, stability, safety, and ease for demonstration. It provides 14 measuring ranges and may serve as galvanometer of measuring instrument of DCA, DCV, ACA and ACV.

Measurement range: DCA: -500uA-0-+500uA
0-10-100Ma-1-5A DCV: 0-5-10V ACA: 0-10-100Ma-1-5A ACV: 0-10-50-250V

Basic Deviation: $\pm 2.5\%$

Damp Time: $\leq 6S$

Size: 27 x 12 x 30cm

EQH 0403

Demonstrating electric meter



It has 14 ranges, It can serve as current detector in the experiment demonstration, DC voltage, and DC resistance. It is original in design and easy to use.

Size: 27 x 12 x 30cm

EQH 0401

Demonstrating electric meter



The meter head adopts the structure of Si-diode protection circuit which can prevent damages from overloading. With reasonable charge and excellent quality, the wonderful design enables it portable and easy to handle clear to read, with high sensibility and exactness.

Measurement range: G: -100uA-0-+100uA
DCA: 0-200 a; 0-0.5A; 0-2.5A Dropping: 95mV
DCV: 0-2.5; 0-10V Voltage Sensitiveness: 5K /V
Operation Temperature: 0OC-40OC; Humidity: $\leq 85\%$
Resistance to Outer Magnetic Field: Rank IV
Damp Time: $\leq 6S$
Size: 27 x 12 x 30cm



EQH 0408-1 Demonstrating electric meter

The model is comprised of inner magnetic structure and measuring circuit. It has such excellence as convenience for usage, stability, safety, and ease for demonstration. It provides 14 measuring ranges and may serve as galvanometer or instrument of measuring minimal DC current, voltage and resistance.

Measurement range: DCA: -50uA-0-+50uA 0-100uA

Measuring Range: 5 K /V

Basic Deviation: DCA.DCV: $\pm 2.5\%$

Size: 27 x 12 x 30cm



EQH 0409-1 Demonstrating electric meter

It is the magnetic-electric rectifier instrument, with 14 ranges. It is the audio-visual aids in experiment demonstrating and teaching, easy to use, light and handy in structure.

Size: 27 x 12 x 30cm



EQH 0407 DC ampermeter

Measuring Range: 0.2~0~0.6A, -1~0~3A
Accuracy: $\pm 2.5\%$ f.s
Sensitivity: 75mV
Dimensions: 133x97x100mm
Weight: 0.3kg



EQH 0408 DC voltmeter

Measuring Range: -1~0~3v, -5~0~15v
Accuracy: $\pm 2.5\%$ f.s
Sensitivity: 1mA
Dimensions: 133x97x100mm
Weight: 0.3kg



EQH 0415 DC microammeter

Measuring Range: 0~200 μ A
Accuracy: $\pm 2.5\%$ f.s
Voltage Drop: 1.100mV ± 2.5 Mv
2.500mV ± 12.5 Mv
Dimensions: 138X100X97mm
Weight: 0.4kg



EQH 0409

Sensitive galvanometer

Sensitivity: 300 μ A
Deviation: 5%
Internal Resistance:
G080 -125 G12.4K -3 K
Dimensions: 138X100X97mm
Weight: 0.4kg



EQH 0414

AC milliammeter

Measuring Range: 0-100mA
0-500mA
Accuracy: $\pm 2.5\%$ f.s.
Voltage Drop: 75mV
Dimensions: 138X100X97mm
Weight: 0.4kg



EQH 0422

Projection Galvanometer

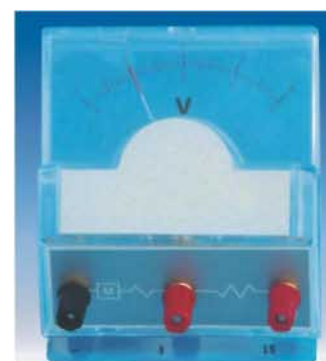
Measuring Range: -300 μ A~0~+300 μ A
Accuracy: $\pm 2.5\%$ f.s
Sensitivity: G0 30mV, G1 750mV
Dimensions: 120x100x40mm
Weight: 0.13kg



EQH 0420

Projection ampermeter

Measuring Range: 0.2~0~0.6A, -1~0~3A
Accuracy: $\pm 2.5\%$ f.s
Sensitivity: 75mV
Dimensions: 120x100x40mm
Weight: 0.13kg



EQH 0461

Projection voltmeter

Measuring Range: 1-15V
Accuracy: 2.5



EQH 2412

Electric Bell

For demonstrating the construction and working principle of the electric bell, also to serve as a model to study the function of an automatic.

Size: 9 x 6 x 27cm



EQH 2421

Working Principle Of 3 Phase Generator Demonstrator

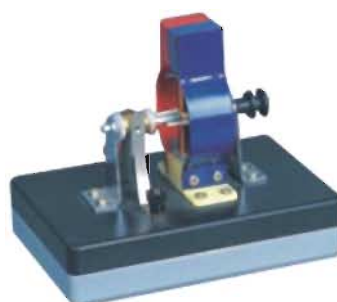
It is used for the explanation of the characteristics of rotary magnetic field and the working principle of 3-phase inductive generator

Size: 15 x 15 x 14cm



EQH 2418-1 Model of mini motor

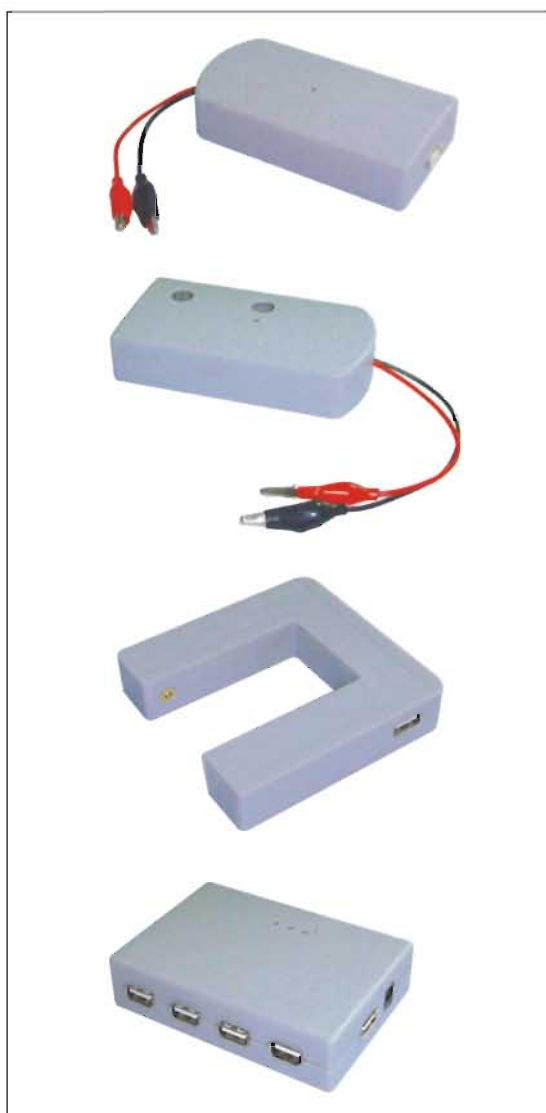
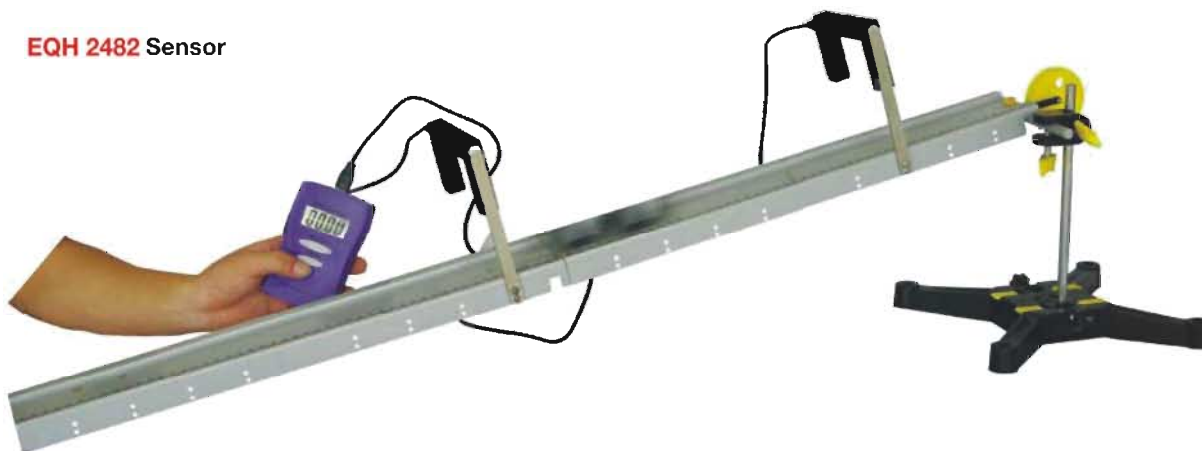
For demonstrating the construction and working principle of the electric bell, also to serve as a model to study the function of an automatic switch of electromagnet type, with the working voltage of 3-6V.



EQH 2418 Model of Mini Electric Motor

A kit of ready-made to construct motors showing different electrical characteristics. The parts pack into a compartmented plastic box with lid which also functions as a base for the motor assembly, The components are fixed by screws, nuts and bolts for which a screwdriver and spanner are included. A strong ceramic magnet is provided to build a permanent magnet motor which will run briskly on a 1.5v battery. Exchanging the magnet for the stator coil included in the kit, extends investigation into series-wound and shunt-wound motors, Instructions are provided.

EQH 2482 Sensor



QH-LIGHT

Specification: Resolution ratio:0.001m.

- Function:1.The speed and acceleration of the motion object.
2.Use the pendulum to measure the gravity acceleration.
3.Measure the periods of the pendulum.

QH-COLLECTOR

Four 12C interface, one USB interface.

QH-VOICE

Specification:Range:40~130dB Resolution ratio:01dB

- Function:1.The property of the voice.
2.Explore the voice
3.Sound wave's overlap
4.Voice resonance

QH-CURRENT

Specification:Range:-0.02~+0.02A,-0.02A~-+0.2A,-2.0A~-+2.0A

Resolution ratio:0.0001A

- Function:1.Measure the current from any part of the circuit.
2.Research the self inductance
3.Observe the alternating current.

QH-CURRENT

Specification:Range:-1μA~1μA -10μA~10μA Resolution ratio:0.01μA

- Function:1.electromagnetism induction phenomenon
2.The induction current while the magnetic flux make change.

QH-VOLTAGE

Specification:Range:-0.33v~+0.33v,-0.33v~-+0.33v,-0.33v~-+33v

Resolution Ratio:0.01v

- Function:1.Measure the potential difference between any two points in the circuit.
2.Research the charge and discharge of the capacitor.
3.Observe the alternating current.

QH-TEMPERATURE

Specification:Range:-35oC~135oC Resolution Ratio:0.0625oC

Function:endothermic or exothermic reaction, Research the solid thaw.

QH-LIGHT

Specification:Range:0-200LUX,0-500LUX,0-1000LUX,0-10000LUX

Resolution Ratio:0.1LUX

- Function:1.Make comparison of light intensity and distance.
2.Research the interference/diffraction/polarization
3.Explore the hot reaction of offside of the red ray.

QH-STRENGTH

Specification: Range:-20N~+20N Resolution Ratio:0.02N

- Function:1.Measure the stress of the vibration object.
2.Measure the strength of the elastic and non-elastic collision.
3.Measure the strength of the pendulum.

QH-MAGNET

Specification:Range:-150mT~+150mT Resolution Ratio:0.025mT

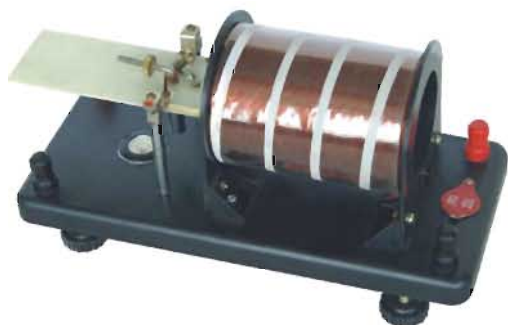
- Function:1.Research the magnetic field intensity of bar magnet and electromagnet
2.Research the magnetic field intensity of solenoid.
3.Explore the magnetic field around the rectilinear wire.

QH-DISTANCE

Specification:Range:0.3-1.5m Resolution ratio:0.001m

- Function:1.Measuring the speed,acceleration of the motion object.
2.Research the free falling motion.
3.Explore the relation between magnetic field and distance.

EQH 2408 Electric current Balance



Explain the reaction and its rule of a loaded conductor in the magnetic field, in order to formulate a clear conception of magnetic induction.
Size: 24 x 11 x 14cm

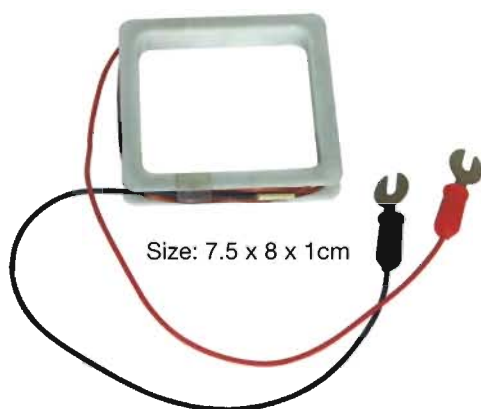
EQH 2411

U-Shape Electronic Magnet



It comprises two coils, a U-type iron core. On the outermost layer of the coils are several turns of rubber wires, indicating the winding direction of the coils. Each of the coils has two terminals what can be connected as series or in parallel. For demonstrating on the fundamental structure and working principle of an electromagnet.
Size: 14 x 10 x 3cm

EQH 2419 Square Coil



Size: 7.5 x 8 x 1cm

EQH 2410

Primary-secondary coils



Size: 6 x 4 x 9.5cm

EQH2409

Demonstration Primary-secondary coils



Size: 7 x 7 x 11cm

3 parts: primary coil, secondary coil and a core. The primary coil can be inserted into the secondary coil, while the core can be inserted into.

EQH 2423

Demonstration for Transformer Principle



Can be disassembled.
Winding 14V, winding 118V
Size: 13 x 8.5 x 10cm

EQH 2404

Experiment of Magnetic Field and Current



It is composed with U-shape magnet, contact tube, junction pole, bracket.
The contact tube is made of thin wall copper tube which connects with same length of the lead, hanging between the U-shape magnet pole, when the contact tube transmits the strong electric current, the contact tube will make it swing.
Size: 22 x 10 x 26cm

EQH 2358
Simple resistor



9999.9 or 9999
Clear description of the changes
in resistance and current relations
Size: 13 x 10 x 7cm

EQH 2358-3 Simple resistor



9999.9 or 9999
Clear description of the changes
in resistance and current relations
Size: 13 x 10 x 7cm

EQH 2354-1 Resistance(ohm): 0-20+5%
Reted current(A): 2A
Size: 32 x 8.5 x 14cm



EQH 2358-1 Resistance box

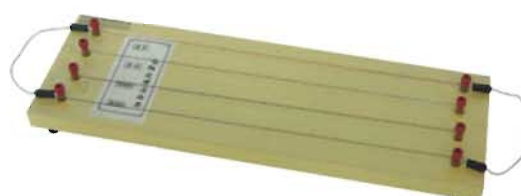


Accurate positioning experiments
necessary resistance
Size: 10 x 3 x 3cm

EQH2354-2 Resistance(ohm): 0-20+5%
Reted current(A): 1.25A
Size: 22 x 6 x 10cm



EQH 2358-2 Demonstrator for resistance law



comprising iron, copper and Ni-Cr threads of two respectively
Size: 49 x 16 x 4cm

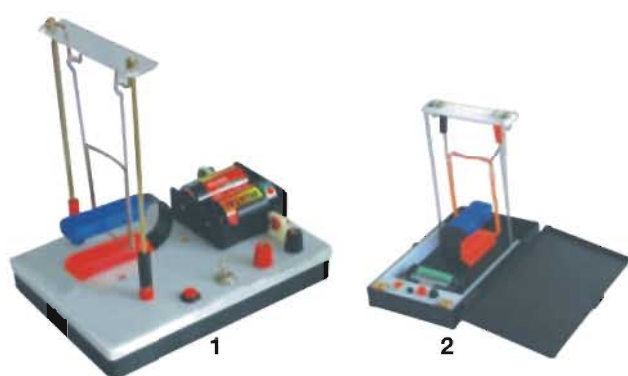
EQH2354-3 Resistance(ohm): 0-20+5%
Reted current(A): 3A
Size: 16 x 6 x 10cm



EQH 2359-1 Demonstration Resistance Box



Clear description the Resistance
Size: 25 x 6 x 13cm

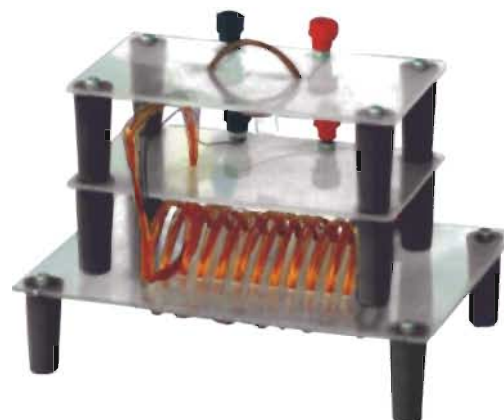


EQH 2441-4

Voltaic effect of the magnetic field

Size: 18 x 9.5 x 16.5cm

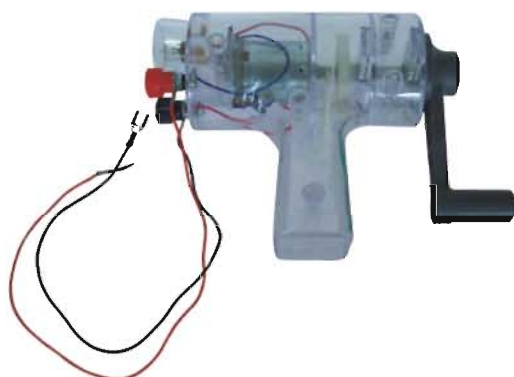
Size: 22 x 15 x 22cm



EQH 2314 Magnetic Field Demo.Vertical Wire

Size: 18 x 14 x 15.5cm

Enables the magnetic field around a 1.5mm diameter vertical wire to be explored. Maximum current is 8A



EQH 2417-1 The hand generator

A handy and versatile tool for exploring electric generators and motors. The generator can produce up to 12V DC, and is rated at 2.3A at 7.5V. Polarity of the output depends on the direction of rotation of the crank handle. Size: 16 x 10.5 x 5.5cm



Specification:

EQH 02082 Thermostat water bath

Hole:1 hole

Size: 28 x 16 x 18cm

Cartridge fuse:4A

Temperature range:room 1000C

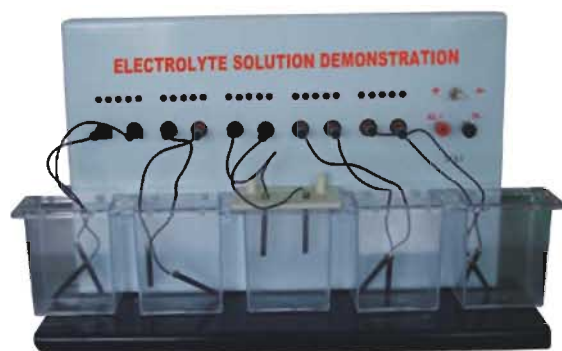
Temperature accuracy:±0.50C

Temperature speed:from the room temperature to boiling points≤70minutes

Working voltage:AC 220V 50Hz

Working environment:room temperature 50C-400C.

Relative humidity ≤80%



EQH 26010 Electrolyte solution demonstration

This instrument is used to make the experiment of the electrolyte solution in the teaching of high school chemistry.

Technical specification:

1.power supply:DC6V

2.five kinds of solutions are shown in the mean time.

3.If the solution is strong electrolyte solution, then the LBD will both shine, if the solution is weak electrolyte solution, then the LBD will be shine one of them or both shine, if the solution is not electrolyte solution, then the LBD will not shine.

Size: 37 x 11 x 23cm

EQH 02073 Magnetic heat puddler

Specification:

1.power supply:22V±10% 50Hz

2.electromotion power:25W

3.heater power:150W

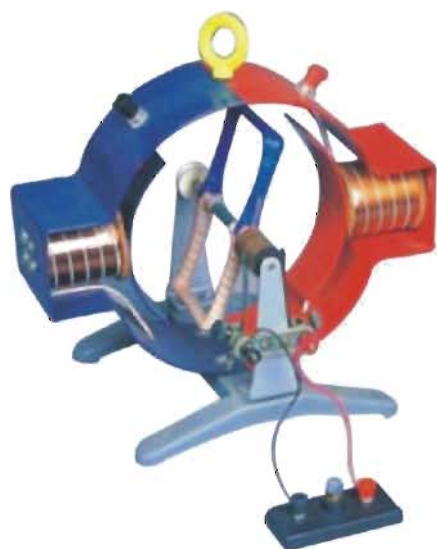
4.speed:0-2000rotate/pcs

Size: 24 x 17 x 13cm



EQH 2416

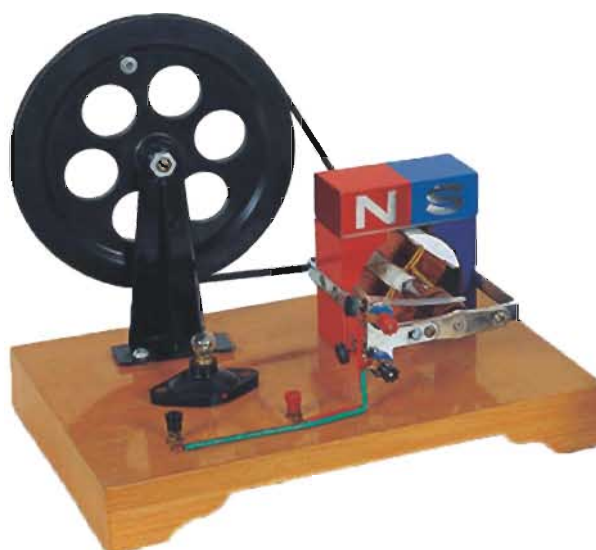
Electric machinery demonstrator



For demonstrating the construction and working principle of the single phase AC and DC generator and the electric motor.

Size: 9 x 6 x 27cm

EQH 2417 The hand generator



It mainly provides the demonstration of the construction and operation principle of an AC/DC generator for teaching the physics for junior middle school and the natural science for primary schools. It is also used as a small power supply.

Size: 35 x 25 x 20cm

EQH 2117 Centrifugal Pump



Centrifugal pump it can be used to explain the construction and working principle of a centrifugal water pump.

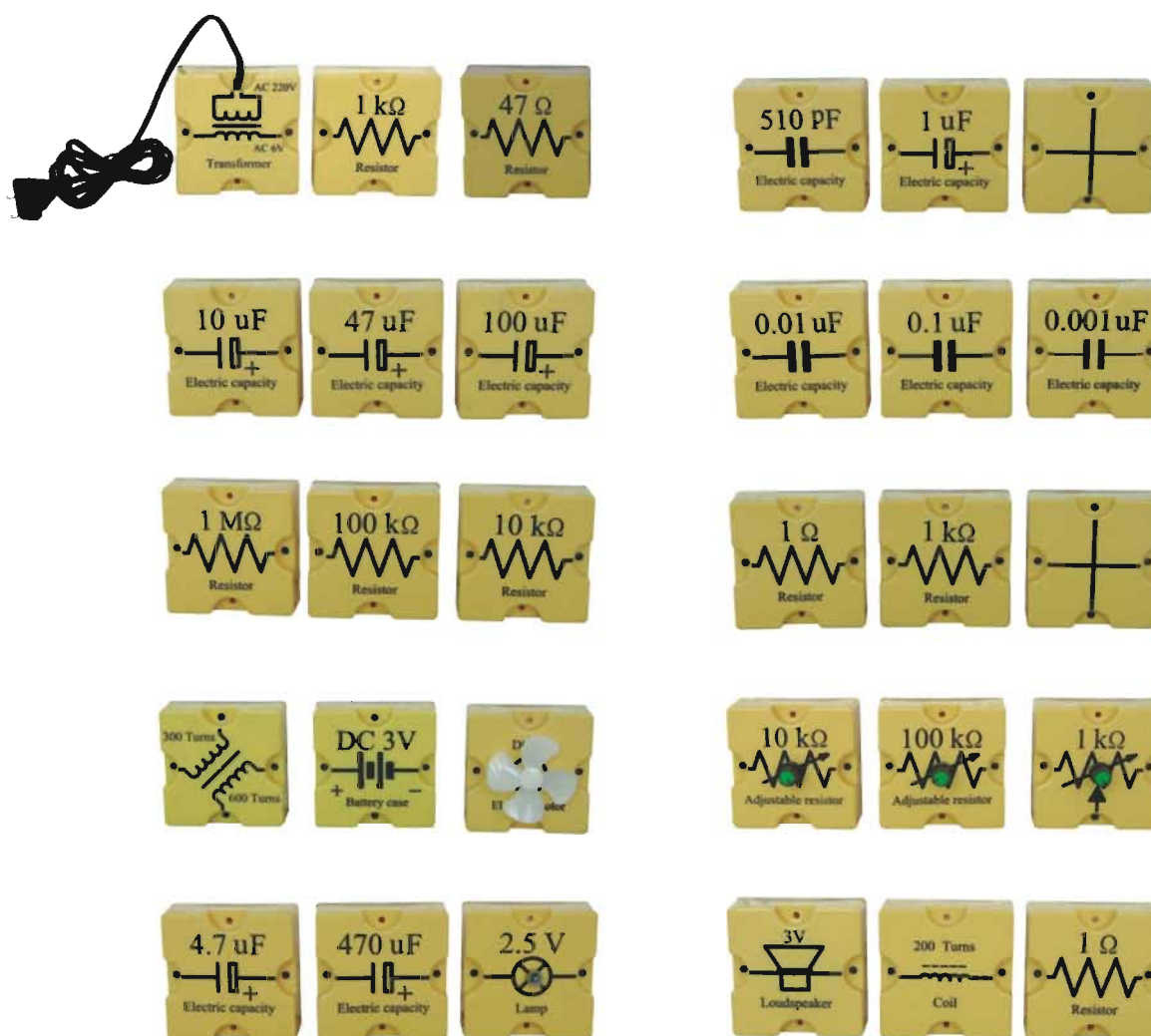
Size: 26 x 18 x 21m

EQH 0418 The hand air extractor



It can be used for bleeding air in experiments. The limiting vacuum of the bleeding air can be not larger than 1 Torr (133pA). It was awarded as the excellent product of chinese teaching instruments twice.

Size: 22 x 22 x 27cm



EQH 2368 Transistor characteristic survey

Two of avometer: It need have the 200uA fi les.

Experimental base plate: It has 35 groups of jacks, after the transparent box part inserts by way of the internal structure automatic connect, also displays automatically the electronic circuit. electronic circuit.

One of diode, transparent box size 44mm×44mm×30mm.

One of light emitter diode, transparent box size 44mm×44mm×30mm.

Ten of four kinds of connecting leads, transparent box size 44mm×44mm×30mm.

1K and 100 potentiometer each one, installs in the transparent box.

The transparent box installs variable resistor: 1K,10K,and 100K each one

The transparent box installs fi xed resistance:47 ,100 ,1k , 10k , 1M , fi ve kinds of each one.

Banana pin connecting lead: Three of red,three of black.

The transparent box installs triode PNP and NPN each one.



EQH 2368-1

Experiment of Junior high school electricity

Size: 24.5 x 14.5 x 4.5cm



EQH 2378

Demonstration box of static electricity

The static electricity shows to experiment box box instrument for inside provide with the beginning seni or high school physics static electricity the showing the experiment and accessories ,Make ues of this instrument can proceed the several thens show the experiment basic up satisfi ed the teaching demand

Size: 53 x 38 x 25cm

EQH 2304-1 Goldleaf sensitive



This is a kind of high sensitive elec-troscope. In the electrostatics ex-periments, it can make better effect when other electroscope cannot make the experiments successfully.

EQH 2304-2 Aluminium-leaf Electroscope



This electroscope can detect the body if it is electrifi ed or not. And if it is positively electrifi ed or negatively electrifi ed, cooper-ated with other instruments. It can also do many other electrostatics experiments.

EQH 2305-1 Pointer Electroscope



This electroscope has a longer pointer and a graduation face. It can be used to do the following experiments:
1/.To detect the body whether carrying electric charges or not, whether carrying positive electric charges or negative electric charges.
2/.To measuring the potential difference between two conductors.
3/.To demonstrate the condition of the electric current forming in the conductor.

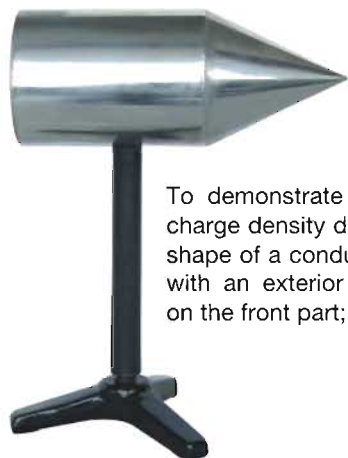
EQH 2305 Pointer electroscope



The sensitive needle of this electroscope pivots to show, on the graduated scale, the importance of electric charges.

Size: 20 x 10 x 33cm

EQH 2307 Cone Conductor



To demonstrate the relation between charge density distribution and surface shape of a conductor. Metallic cylinder with an exterior and an interior cone on the front part; on an insulating stem.

EQH 2313 Sphere Conductor



1. To demonstrate that when the electric charges of a conductor are in the equilibrium state, the electric charges distribute on the outer surface of the conductor only.
2. To be used to do the experiment by which the concept of the capacitance of conductor may be summed up.
3. Copperated with other apparatuses, it can be used to do the experiments of electrostatic screening and so on.

EQH 2312 Separable Pillow Shape Conductor



The structure of this apparatus is a metal cylinder, its one end is made into the shape of semi sphere and the other end is flat, it's mounted on an insulating pillar. The pillar is fixed on a metal base. Two of these apparatuses are for one set. When doing electrostatics experiments, two flat ends of these two apparatuses may be contacted closely. With these apparatuses, the experiments of electrostatic induction and inducing electrification can be done. Size: 10 x 6 x 23cm



EQH 23009-1 Electric plume

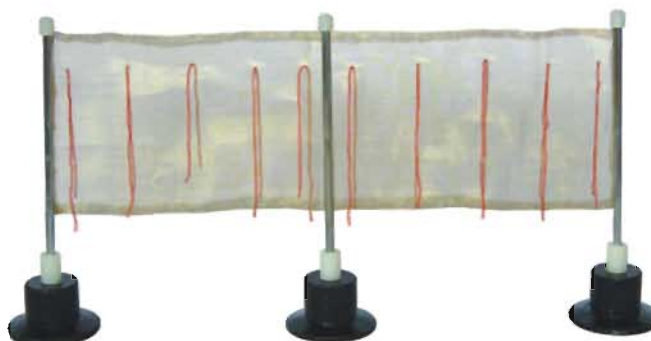
This instrument is used in the teaching of physics, use this item to check the ebonite rod whether it has the static while make a friction. Size: 5.5 x 5 x 24.5cm

EQH 2304 Foil electroscope



When charged leaves move away from each other. Front and rear sides of box are made of glass for better visibility Size: 12 x 8 x 15cm

EQH 2318 Screen Electroscope



To show at the time that the electric charge is equilibrium, electric charge on the conductor distribute in the of its outward appearance, and combine in the curvature of surface conductor relevant. Size: 36 x 6 x 20cm

EQH 26001 Water Electrolyse



Size:15 x 11 x 35 cm

EQH 2554 Geiger counter



Size:17 x 21 x 10 cm

EQH 2639

Experiment of electrolyte solution conductivity



EQH 2612

ion Exchange demonstrator



Size:15 x 8.5 x 27cm

EQH 2618-2

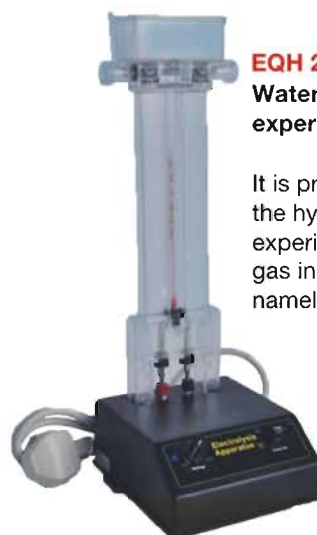
PHE electrolysis experiment kit



Size:16 x 12 x 12 cm

EQH 26001-1

Water electrolysis experimental device



It is proved that water is formed by the hydrogen and oxygen, through the experiments ,we could see the difference gas in the two glass tubes ,that is namely oxygen and hydrogen.

EQH 2618-1 Experiment of Primary Cell



EQH 2618 Experiment of primary cell



EQH 2602-1

Analyse-measure Electrode



Size:20 x 10 x 15 cm

It is used in high school to research the principle of the pri-mary cell and the use of the primary cell. Experiment of pri-mary cell is composed with plastic transparent container and cover(electrode plate, copper plate,zinc plate and aluminium plate for each,electrode block and wiring terminal and so on.

Size: 8 x 5x 10 cm



Size: 29 x 17 x 15cm

EQH 2301 Glass Rod With Silk



This products is used in the experiment of electric by friction. The glass rod is transparent. Size: 30 x 4 x 3.5cm

EQH 2302 Ebonite Rod With Woolen



Size: 29 x 17 x 28cm



This products is used in the experiment of electric by friction. Size: 30 x 4 x 3cm



Size: 29 x 17 x 38cm

EQH 2310 Wimshurst machine

Electrical influence machine for generating very high DC voltages

Diameter of the disk 230~240mm
The discharge distance of a sparhle:50~60mm
Normal speed: 120 rotate/min
The temperature of the enviroment:-2~400°C
Relative moisture:>85%
Size: 30 x 18 x 35cm



EQH 2310-1 Static experiment kit

This products is used together with electrostatic machine,this instrument is rotation by the static in the expertiment, it make students to clearly understand that the origin and the function of the static.

It is an instrument suitable for the use of college and middle school physics teaching and primary school teaching. A great deal of electric charge can be continuously obtained during working, so it can gain higher electrostatic voltage (about tens of thousands of volts.) It is an electrostatic test, It can also do a series of test itself, for instance, spark discharge and the capacitance chang of capacitor.



EQH 2311 Van De Graaff Generator

It can provide a high voltage electrostatic source for physical electrostatic, and make many experiments, such as, the demonstration of charge nature, lines of electric force,spark discharge, parallel plate capacity and electrostatic precipitation,etc. the experiments achieve good results and are safe.

Size: 47 x 20 x 62cm

EQH 2351 Lamp socket



1



3



2



4

Size: 3.5 x 3.5 x 2.5cm

Suitable for the screw-type bulb and the plug-type bulb

EQH S2351 Lamp



1.5V 3A



EQH 2915-1

The Renewable Energy Kit

The Renewable Energy Kit has been designed to support the teaching of many stages and levels of the British National Curriculum, the most direct links can be made with the Geography and Science programmes of study. The kit comprises of the following components:

- Wind Turbine
- Water Turbine-1 inlet/1 outlet pipe
- Solar Panel
- Universal Base
- Universal Mast Section
- Output Dials-
 1. Power Meter
 2. Light Display(LED)
 3. Alarm/Buzzer
 4. Motion Display(gears)



EQH 2370 Switch

Single knife switch
Size: 9 x 3.5 x 3cm



EQH 2370-1 Switch

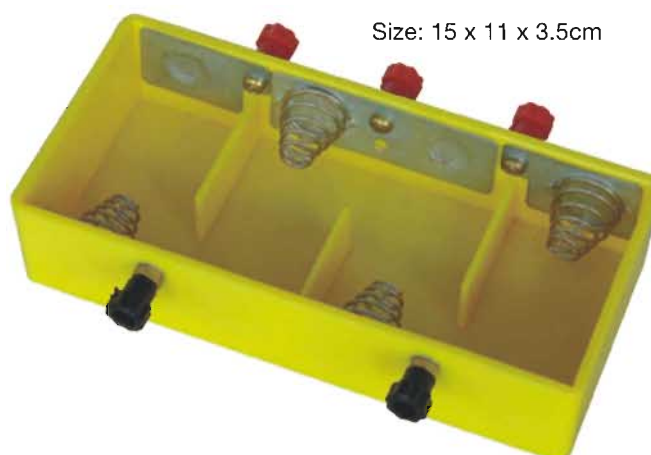
Single knife double throw switch



EQH 2371 Switch

Double throw double knife switch
Size: 11 x 5.5 x 3.5cm

EQH 2374 Battery box



Size: 15 x 11 x 3.5cm

This products can be used as a power supply in the teaching.



EQH 2520-2 Solar Deluxe Educational kit

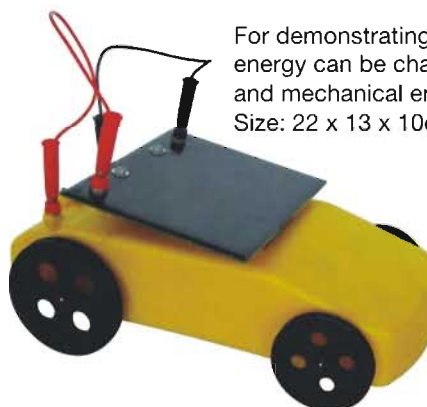
1. By solar power, harness the power of the sun, and environmental friendly D.I.Y. Kit.
 2. Children can do a series of do-it-yourself experiments to acquire the basic knowledge of solar energy.
 3. Let them learn how to:
 - (1) Make an electrical circuit
 - (2) Make a solar circuit
 - (3) Learn how to increase voltage
 - (4) Learn how to increase current
 - (5) Use solar power to produce energy for a radio, calculator, battery charge or 1.5V cassette player...etc. Use your imagination for more and more applications.
- Size: 26 x 24 x 6cm

EQH 2915 Solar energy application material



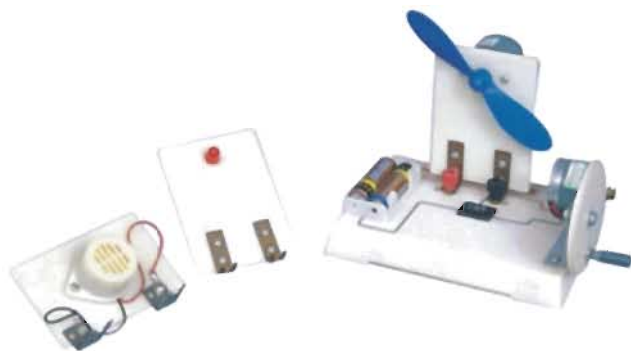
Specification:
 open circuit voltage $\geq 4V$
 output current $\geq 70mA$
 music sound:
 working voltage 3V
 working current 60mA
 electrical machine plug-in unit:
 working voltage 3V
 working current 30mA
 LBD working voltage 3V
 LBD working current $\geq 15mA$
 Size: 20 x 20 x 4cm

EQH 2520-1 Solar powered vehicle



For demonstrating that the solar energy can be changed to electrical and mechanical energy
 Size: 22 x 13 x 10cm

EQH 2481 Energy conversion Demonstrator



The experiment device is made up of motherboard, manual dynamometer, battery box, conversion switch, little fan board and light board. The manual dynamometer, battery box and conversion switch are installed on the motherboard together, and the music board, little fan board or light board can be connected with the terminals of the device according to various demands by different experiments. Size: 19.5 x 12.5 x 9cm

EQH 2520 Demonstrator Application of Solar Cells



For demonstrating that the solar energy can be changed into electrical and mechanical energy.
 Size: 20 x 13 x 10cm

EQH 2208 Advanced ripple tank kit



For the visual demonstration of the properties of wave motion and the effects of refraction, diffraction and interference.

specification:

- 1.power supply:220V/50Hz
- 2.working voltage:DC12V $\pm 5\%$
- 3.halogen lamp working voltage:12V (100W)
- 4.Size(cm):35x30x45 Weight(kg):10.5

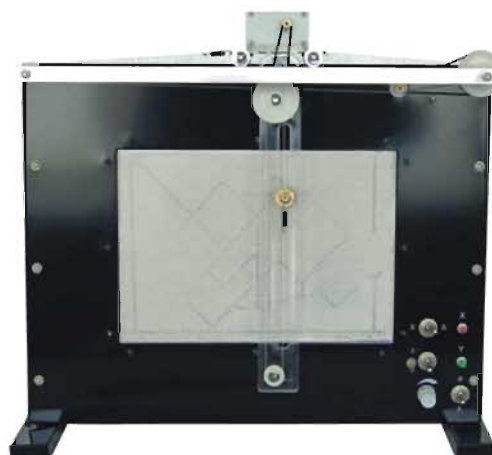
EQH 2156 Motion of a free falling body

Size: 28 x 25 x 62cm



EQH 2152 Synthesis and disassemble of force

size:40x12x38cm



EQH2152-1

Synthesis and decomposition of movement

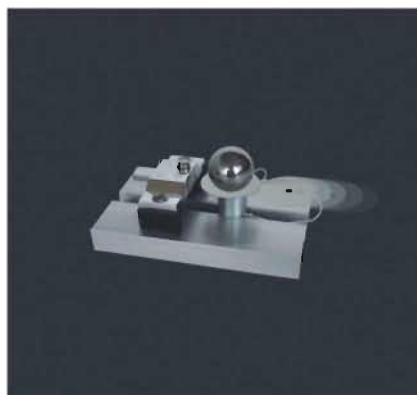
It can be divided into the synthesis and decomposition of displacement and Velocity .There is two parts of the Instrument: one for the motion synthesis presenters,the other side for sports displacement presenter.Apparatus mainly consists of lots of parts,such as the base,pole,tracing plates,guide rods,guide rail,driving,sliders and Circuit Controller.

EQH 2199 Stability apparatus



For studying the stability of a body as a function of the position of its centre of gravity relative to the base area. Dimensions: 10x10x20cm

EQH 2191 Newton's first law



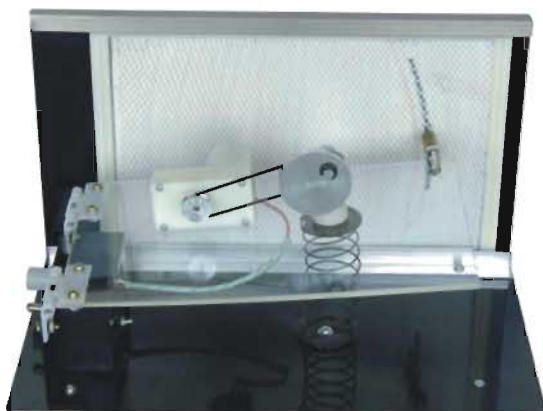
Size: 10 x 10 x 8cm

The law of inertia and the concept of mass are introduced and supported with a variety of example and intriguing demonstrations, such as the tablecloth and dishes stunt. The concepts of net force and statics are also illustrated.

EQH 2191-1 Newton's first law



EQH 2221 Demonstration of forced vibration and sypathetic vibration



Size: 28 x 16 x 7cm

EQH 2124 Force Table



For quantitative investigations of the resolution of forces. Circular work disc on a cast-iron base. Dual scaling of the angular divisions allows clockwise and counter-clockwise reading of values. Four sets of slot-weight, nickel plated brass, each comprising 2x5g, 4x10g and 4x20g weights as well as a 20g weight suspender. Four pulleys with fastening clips and cords. Box level.

EQH 2212 Wave motion demonstrator



This horizontal torsion wave machine illustrates wave propagation and reflection. All the principle phenomena of propagation. Size: 113 x 24 x 38cm



EQH 2111 Pascal's ball metallic

Size: 33 x 11 x 11

Comprising a hollow metal with orifices. The ball is joined to piston and cylinder. To demonstrate the equal transmission by liquids of pressure in all direction to prove pascal's law.



EQH 103 Vacuum and pressure pump

Size: 33.5 x 11 x 11cm

Hand Operated Dual Purpose Air Pump Suitable for pumping and exhausting, the highest vacuum 50cm Hg, and the highest pressure 4 atm. Used for various kinds of pressure and vacuum experiments.



EQH 103-1 Dualpurpose air pump

Size: 11 x 8 x 19cm



EQH 1007 Vacuum pump

Size: 28 x 12 x 21cm

As a specialized enterprise in marking vacuum pumps . We are always devoting ourselves to satisfying users' need of high qualified products not only cost less energy, produce less noise and last well, but also are the best design for environment protecting and less pumped gaspollution. Excellent design and making will bring you more convenience.



EQH 1008-2

Vacuum hand pump with pressure gauge

Size: 24 x 19 x 8cm

This demonstration-oriented lecture focuses on the atmosphere: its weight, pressure, and the buoyancy it exerts on objects. Barometers, Boyle's law, and Bernoulli's principle are also discussed.



EQH 1008 Manual Vacuum

Size: 24 x 18 x 3cm



EQH 1008-1 Manual vacuum pump with watch

Ideal device for generating vacuum independent of mains supply. Made of plastic, extremely lightweight and user-friendly because of its ergonomic design. Maintenance-free, self-lubrication and corrosion-resistant. The pump reaches a difference Against the external pressure of approx. Size: 23 x 18 x 4.5cm



EQH 2115 Magdebing Hemisphere metal

Size: 12x12x6cm



EQH 2115-2 Magdebing Hemisphere (Rubber)

The apparatus is made of two rubber hemispheres designed to fit together with an O-ring seal. Size: 8 x 8.5cm



EQH 2115-3 Mini Magdebing Hemisphere Rubber

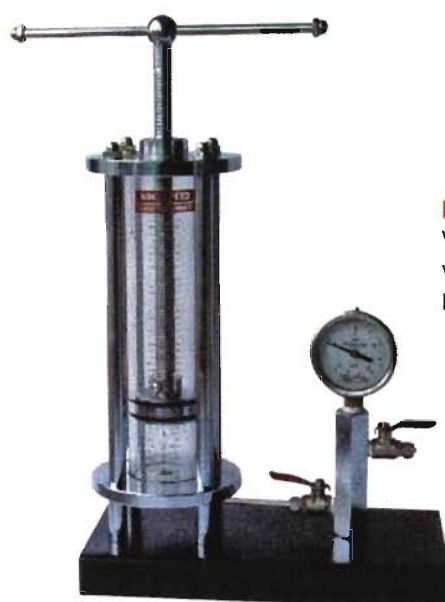
Size: 14 x 10cm

For demonstrate the existence of atmospheric pressure in middle school or primary schools.



EQH 2201 Spring Vibrator

This instrument is like air cushion, which is composed with lead rail, block, spring, dividing ruler, intake tube and so on. It demonstrate the simple harmonic vibration, the sympathetic vibration, the damped vibration forced vibration & drawing various kind of curves of all vibrations. Size: 27 x 11 x 15cm



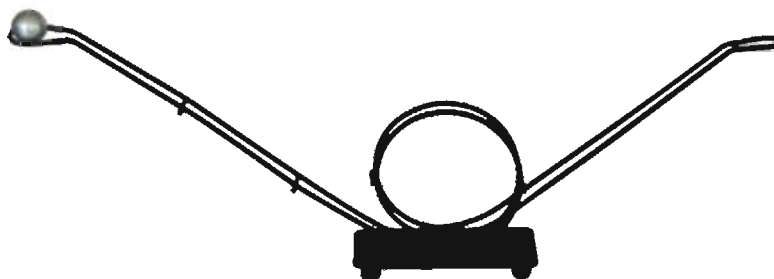
EQH2257 Boyle's Law

Volume V, pressure P, $PV = \text{Constant}$. A certain quality of gas, when the temperature constant, it's pressure and volume is inversely proportional, that is to say, $P_1V_1 = P_2V_2$.



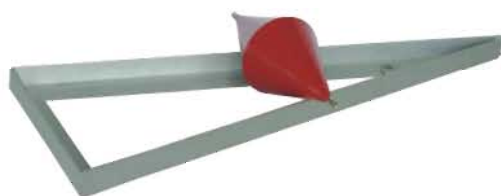
EQH X2108 Weight car

This products is used in the science experiment, it illustrated the relation between center of gravity and gravity while the car moving.



EQH 2134 Centrifugal Railway Model

It makes demonstration object laboratory apparatus of circular motion in vertical level, It is simple, ocular to demonstration centrifugal function and law.
Size: 41.5 x 10 x 50cm



EQH 2190 Bevel cone

A fascinating demonstration of center-of-gravity principle,when places on the diverging bars of the inclined plane,the cone appears to roll up the plane. Upon careful examination,however, students determine that the axis of the cone is actually moving down the slope of the bars.



EQH 2190-1 Gyroscope



EQH 2153 Newtons tube

Size: 115 x 10 x 10cm

The tube can demonstrate the state of motion of freely-falling bodies with different mass.



EQH 2187 Newton's Second Law Demonstrator

Size: 95 x 8 x 22cm

Uses:This instrument can be used to demonstrate and verify the Newton's Second Law. Characteristic:The structure of this instrument is very special for its mono-layer, double-tracks and double-trolleys. It can be used to prove the relationship of "F=ma". The demonstration effect is very obvious. Length of the track :0.9M

EQH 163-1 Horseshoe Magnet steel



EQH 163-3 U-shaped Magnet Permanent chrome steel

Size: 9 x 7 x 2cm



U080:40x50x22x13mm
U081:35x55x13.5x10mm
U082:80x62x20x10mm
U083:89x76x50x18.5mm
U084:62x70x51x20mm
U085:106x86x33.5x20mm

EQH 2405 Magnetic Needle



To demonstrate the mutual acting of the magnetic poles& determinate the direction of magnetic fi eld.
Size: 7 x 7 x 14cm

EQH 163-6 Bar magnets Pair steel

Size: 7.5 x 1.5 x 2cm



T053:190x27x15mm
T054:170x20x10mm
T055:115x15x9mm
T056:75x15x10mm
T057:55x14x9mm

EQH 2406 Small Magnetic Needle

10 pcs in 1 set



Stainless steel point at the top of the plastic base enables magnetic needles to rotate freely. To demonstrate linear current, circuit current, atlas&polarity of magnetic lines of force in conducted coils & direction of magnetic fi eld round the magnetic object.

EQH 2424 Lenz's Law Demonstrator



Use this simple, economical device,construted of cast iron base and aluminum ring, to demonstrate the induction of an magnetic fi eld. By slowly passing a powerful magnet through one of the metal loops, you cause the device to rotate in the direction the magnet is moving.
Size: 18 x 7 x 11cm



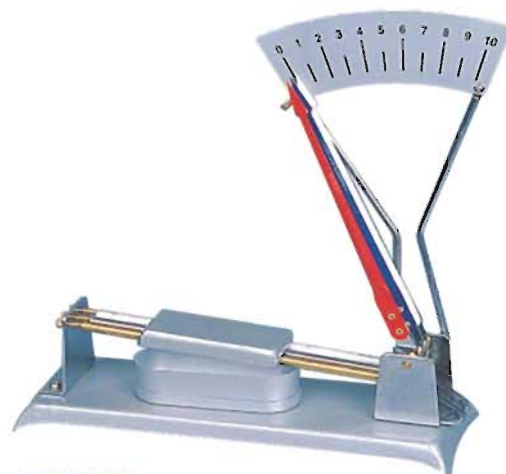
EQH 2251 Calorimeter

For determining the specific heat of matter. With inner vessel (approx 75x50mm) carried on cork supports; Outer vessel: approx. 100x75mm dia.; One lid for outer vessel with central tubule for thermometer; One slit for stirrer, Electrical heating element.



EQH 2258-1

Linear expansion apparatus
Size: 29x7x7 cm



EQH 2258

Linear expansion apparatus
For comparative experiments of coefficients of linear expansion. Heating extends simultaneously different metal rods (iron, brass and copper). Equipped with a spirit lamp and reading connected pointer-needles on scale.



EQH 6432

Solid Body Expansion Demonstrator
It is used in schools for demonstrating heat expansion of solid metal body.



EQH 2260 Conductometer

Find out which metal conducts heat by placing a small amount of wax at the tip of each rod and heating from beneath in the centre. Pack includes a small block of wax and rods of aluminum, bronze, steel, nickel and copper.



EQH 2260-2 Heat conductor

For demonstration and comparison of the phenomena of the heat conductivity of metals. Size: 20x16x19 cm



EQH S2258

Bimetallic strip thermostat
Demonstrator of temperature control by double metal plate
Size: 22x13x9 cm



EQH 2253

Pneumatic Compress Ignitor
For demonstrate the air when pressed at great speed. Its temperature rises and ignites flammable materials.



EQH 217 Impeller

The speed of impeller depends on the speed of wind. Used for science teaching in explaining the principle of steam and water turbines.



EQH 2206-3 Tuning fork

Resonance box made of grained fir wood, particularly long-sustain, with removable tuning fork. Soft striking hammer included.

Characteristic frequency : 440 Hz

Length of tuning fork: approx: 170mm



EQH 2206-2 Resonance tuning fork

Characteristic frequency:440 Hz



EQH 2206-1 Resonance tuning fork

Characteristic frequency : 256Hz, 288Hz, 320Hz, 341.3Hz, 384Hz, 426.6Hz, 480Hz, 512Hz



EQH 2206-4 Resonance tuning fork

Characteristic frequency : 256Hz, 320Hz, 384Hz, 512Hz



EQH 2206-5 Resonance tuning fork

Turning fork is the basic instrument of the acoustics, it demonstrate the origin of the sound, sound intervene,also can measure the speed of the sound and validate the conduction of the sound wave and other acoustics experiment.

Characteristic frequency :
256Hz, 288Hz, 320Hz, 341.3Hz,
384Hz, 426.6Hz, 480Hz, 512Hz



EQH 2428-4 Double black pulley



EQH 2428-3 Triple black pulley



EQH 2428-6 Pulleys



EQH 2122 Pulley Set

Made of plastic and with metal frame, with hooks on top and bottom. Diameter: 50mm

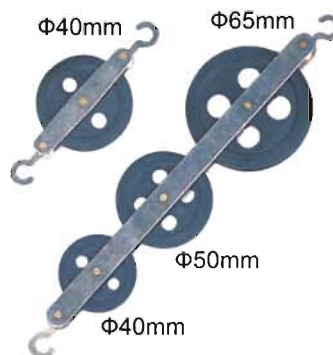
1. Single pulley, Diameter: 40mm

2. Single pulley, Diameter: 50mm

3. Double tandem pulley, Diameter: 40mm/65mm

4. Triple tandem pulley, Diameter: 40mm/50mm/65mm

For perform student experiment about machanical effi ciency.

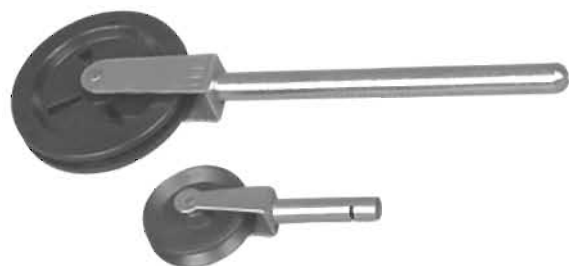


EQH 2428-7 Pulleys

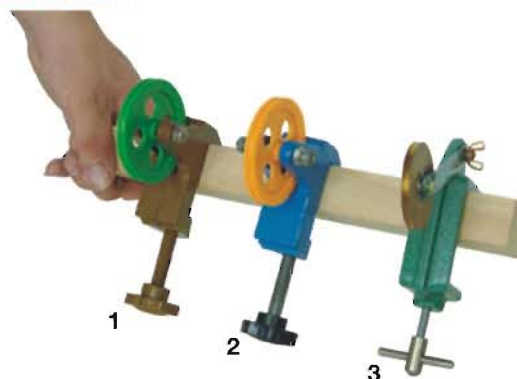


EQH 2428-8 Pulleys

EQH 2121 Pulleys



EQH 2428-1 Pulleys



Students experiment with one of the oldest and simplest of machines the pulley. By placing pulleys in various combinations and arrangements, students will soon discover for themselves how pulleys are useful in making work easier. The mechanical advantage of various pulley combinations will be experienced firsthand by your students. Quantitative measurements are done with a spring balance. Student recall of pulley principles is guaranteed to increase after this hands on experiment. Buy multiple sets of this inexpensive kit for use with your entire class.



EQH 2105-4
Demonstration Dynamometer

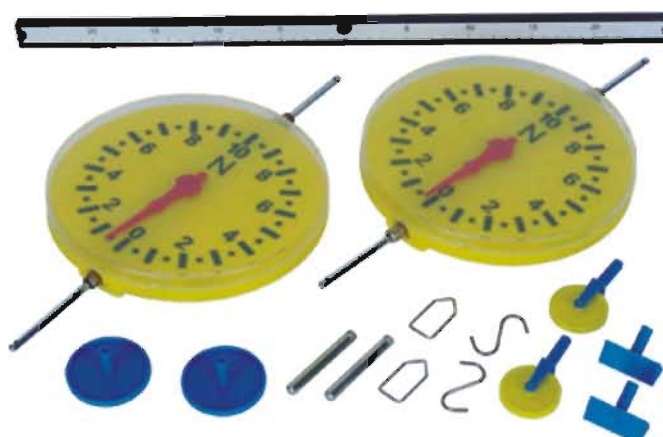
Item No.	NK-10	NK-20	NK-30	NK-50	NK-100	NK-200	NK-300	NK-500
Maximum measurement value	10N	20N	30N	50N	100N	200N	300N	500N
	1kg	2kg	3kg	5kg	10kg	20kg	30kg	50kg
Minimum measurement value	1N	2N	3N	5N	10N	20N	30N	50N
	0.1kg	0.2kg	0.3kg	0.5kg	1kg	2kg	3kg	5kg
Load	0.05N	0.1N	0.2N	0.25N	0.5N	1.0N	2.0N	2.5N
division	0.01kg	0.02kg	0.02kg	0.05kg	0.1kg	0.2kg	0.2kg	0.5kg
value								
Indication Error	±1%							
Route	10mm							
Working Temperature	20°C±10°C							
Transport Temperature	27°C ~ ±70°C							
Relative Humidity	15% ~ 80%RH							
Working Evironment	There is no hypocenter and non-corrosive media around it.							



EQH 2105-3
Demonstration Dynamometer

Round dynamometer mainly provides the teaching demonstration of the physical mechanics Round dynamometer mainly provides the teaching demonstration of the physical mechanics for middle school, It can measure the size of the forces and the presuure and the pull in all directions. For example, it can demonstrate the composition and the decomposition of forces and verify archimede's law, etc.

Size: 63.5x22.5x4.5 cm



EQH 21006-5 Slinky Spring



EQH 21006-3 Slinky spring



EQH 21006-4 Slinky spring



For illustrating the behavior of longitudinal waves.

EQH 21006-5 Screw Spring Set



Full set included 5 pcs:
0.5N, 1N, 2N, 3N, and 5N

EQH 21006 Slinky spring



EQH TCO3 Hard dynamometer





EQH 2144 Dynamometer
2N



EQH 2104-1 Round dynamometer
1N, 5N



EQH 2104 Dynamometer
1N, 5N, 10N



EQH 2101
1N, 5N, 10N



EQH 2105
Dynamometer
10N



EQH 2105-1
10N



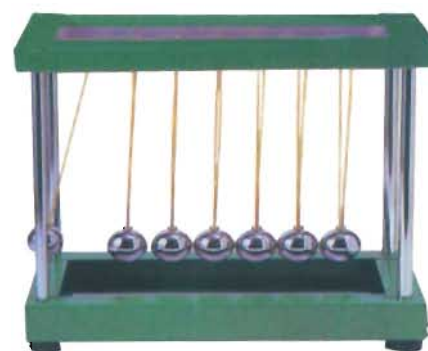
EQH 2103-1 Dynamometer
Color-coded with over-extension protection mechanism. In a plastic sleeve with a scale on the inside or outside ; Includes a knurled screw for zeropoint correction.
1N, 2N, 5N, 10N



EQH2302-1 Collision ball
Size: 16.5 x 13x 16cm



EQH 2302-2 Collision ball
Size: 20 x 15 x 22.5cm



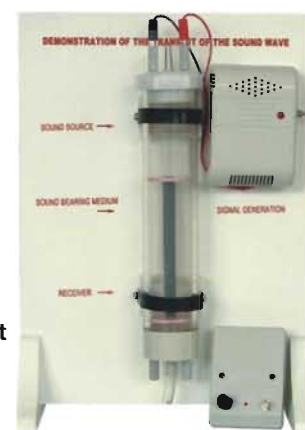
EQH 2302-5 Collision ball
Size: 25 x 15 x 22.5cm

Demonstrate that for every action there is an equal and opposite reaction. Lift and drop one ball to see one ball pop out from the other side. Lift two balls and two pop out. Leave this popular toy on your desk for a school year of enjoyment and learning



EQH 21022
Demonstration the relation between speed and pressure of the liquids

Demonstration for the relation between speed and pressure of the liquids, When the speed of the liquid is low, the pressure of the liquid will be high. Then if the speed of the liquids is fast, the pressure will be lower. Size: 44 x 31 x 13cm



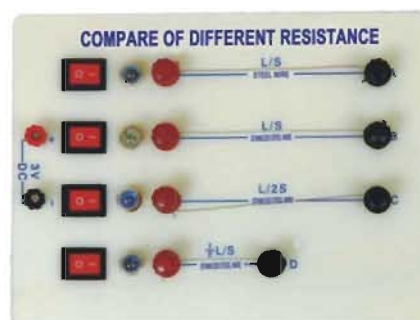
EQH 2225
Demonstration of the transmit of the sound wave

Size: 24 x 13 x 34cm

This products is demonstrated the sound can be transmitted by air, liquid and solid, but can not be in the vacuum. put the sounder and the sound receiver in the container of sound transmit, you can find the sound transmit is different while changed the different medium. while you subduct the air in the container, the sounder can make the sound, but the sound receiver decrease the sound quickly, if you sudduct the air to vacuum, so it will not make the sound, that is why they can not transmit in the vacuum.



EQH 2168 The water wheel
Demonstration for the construction of water wheel. The working element is change the potential of the water into the energy, to make the equipment working. Size: 15 x 15 x 23cm



EQH 2358-3 Compare of different resistance
Used for physical experiment. Compare with the resistance in different length, material, cross section. Size: 20 x 13 x 5cm



EQH 2142

Demonstration of overweight and weightlessness

1. Dynamometer max scale: 2N 2. Min scale: 0.02N
3. Dynamometer error $\leq 0.02N$ 4. Slot Weight: 3x50g
5. The weight of the dynamometer is 0.35kg.
Size: 110 x 29 x 4cm



EQH 2118

Archimede law demonstrator

Comprising a transparent plastic cylinder container. A colored solid plastic cylinder, and a simple spring balance. It mainly used in the research of the law of Archimedes.
Size: 17.5*4*7cm

EQH 2173

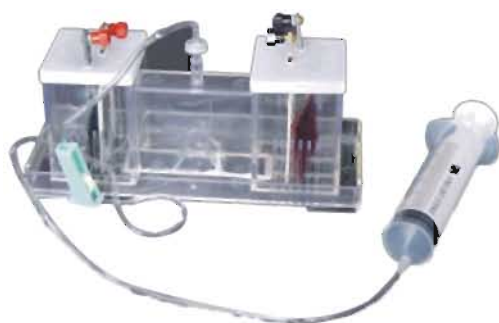
Demonstration of submarine

Demonstration for students to easy learning flotation of the ball heavier than the ball, the ball will sink. Size: 8 x 8 x 9cm



EQH 2185 Connection of pressure and deepness of the liquids

Demonstration of the liquid more pressure when it's become more deeper. It's same pressure when the liquid in same lever.
Size: 18 x 11 x 20cm



EQHJ 2365 Demonstrator of the battery for adjustable internal resistance

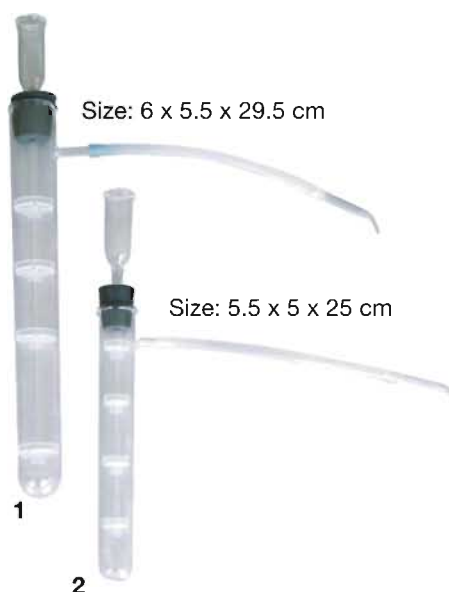
Battery constitute by battery jar, overflow gutter, cover plate of battery jar, probe, the positive and negative charges plate, air valve, air chamber, windpipe, switch, inflator etc. The positive and negative charges plate insert at both ends of battery jar, air valve with air chamber, windpipe cover the air chamber, probe made from flaky material of anti-acid polarization and less of electromotive force.



EQH 2280-1 Static oil film experiment

This product is making the mealiness objects which covered in the surface of the oil film separated by the static.

Size: 20 x 20 x 12 cm



EQH 62006 Dry tube

This products is used to filtrate gas and liquid in order to make the experiment much more accuracy.



EQH2280-2 Titrimeter

It is an instrument used in teaching physics in senior middle middle school for the measurement of the titration temperature of the air.

EQH 62098 U-Shape tube



It is used the kryptol to get the different gas and liquid in the experimnent.

Size: 16 x 13 x 2.5 cm

EQH 2280 Oil film experiment kit



Drop in the water of oleic acid diluent during the experiment, you can find there will be oil film on the water surface, then put some mealiness objects, the oil film will be separated due to its tensility is less than water, so can get the result of $L=V/S$.

Size: 35 x 35 x 4 cm

EQH 2433 Lorentz Force Demonstrator



Size: 30 x 28 x 9 cm

EQH 2522 Diffraction of Light



EQH 2725 Autoclave



This instrument is making use of the compressed saturation steam to antiseptis the medical equipment, medicine, glassware and so on. It has the advantage of deep penetrability.

Specification:

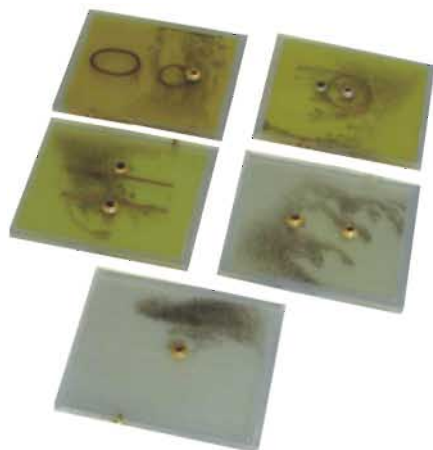
safety valve working pressure: 0.14MPa

steam pressure: 0.165MPa

open-close pressure: 0.14MPa~0.165MPa,

when the pressure up to 0.165MPa, the temperature will be rise to 1280°C

Size: 32 x 38cm

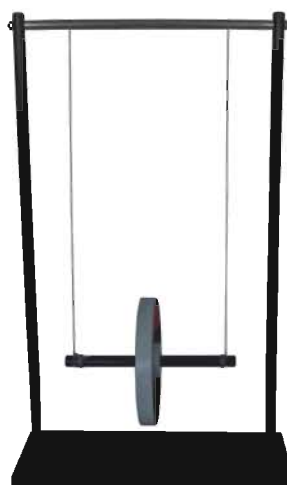


EQH 2245

Demonstrator for magnetic line of force(Liquid)

For observing the distribution about the magnetic line force

Size: 12 x 10 x 5.5 cm



EQH 2123 Rolling pendulum

This products demonstrate the change between the kinetic energy and potential energy, and also the conservation of the mechanical energy.

Size: 23 x 10 x 41cm

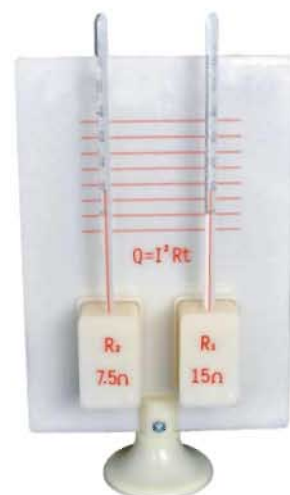


EQH 2375 Joule law demonstrator

1.Red fluid thermometer, obvious contrast

2.The medium is water or coal oil

3.Resistance:simple integer ratio(1:2,1:3)



EQH 2621-1 Model of steam engine



1
Φ2cm



2
Φ3.4cm



3
Φ4cm



4
Φ4cm



5
Φ5cm



6
Φ5cm



7
Φ5.5cm



8
Φ5.5cm



9



10



11



12



13



14



15



16



17



18



19



20

EQH 2441-1 Magnetism Demonstrator

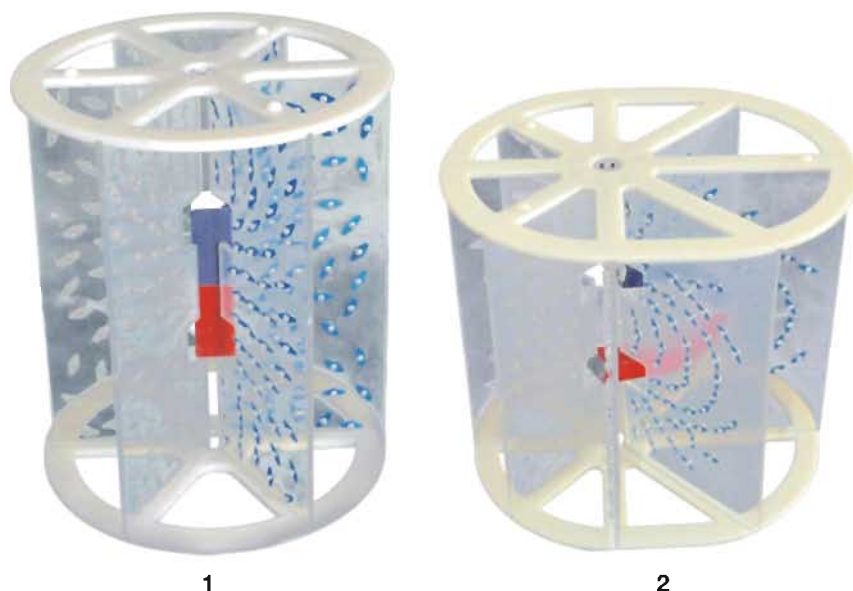


Magnetic lines of force I
To show the lines of force of a
straight cuboid magnet.
Size: 25 x 25 x 2cm

EQH 2407-1 Magnetic molecule model



24 steel needles are settled at the bottom of the cuboid
box, whose crust is made of transparent plastic.
They are organized in 4 lines, 6 in each line. 24 pieces of
little magnetic needles are put on the top of the steel
needles covered by a transparent plastic plate. Each
pieces of magnetic could rotate around the steel needle.
Size: 15 x 11 x 2.5cm



EQH 2441-1 Magnetism Demonstrator

Magnetic lines of force I
To show the lines of force of a
straight cuboid magnet.
Size: 18 x 18 x 21cm

Magnetic lines of force U
Small magnetic needles are placed
on the sides of the plastic base. When
the U magnet introduced the needles
line up showing the lines of force



**EQH2441-2
Magnetic induction-line Demonstrator**

Flat type, It makes use of transparent
material and can be
projected, using iron filings demonstrate
the magnetic field.



EQH 2145 Inclined plane

Used for the study of motion on an inclined plane. Consists of an inclined plane, calibrated 0-81.5cm on one edge. At one end is a bar to stop objects from sliding and at the other an adjustable pulley. A hook is in front of the truck and a pack of electromagnetic timing tape in the back. With weight pan and friction blocks.

Size: 95 x 20 x 58 cm



EQH 2108 Linear motion

To lift a heavy load to a certain height it is much easier to push it up a slope than to directly lift. If the student can read off the level of the force required to stop the car directly from the dynamometer. The forces action at different plane angles can be compared.

Size: 110 x 20 x 24 cm



EQH 04227-A Slot Track Type

Slot track typeA mechanical experiment apparatus and can be used for quantity studying motion regulations of the object in the experiment,with computerized timer.

Usable length:900mm

Electromagnet power:4-5VDC

Size: 91 x 20 x 15 cm



EQH 2260-1

Inclined Friction Board Apparatus

Size: 83 x 23 x 34 cm

EQH 8205-1 Tool set



EQH 8205-2 Tool set



EQH 8205-2 Tool set



EQH 6103-1 Measuring tape

8FT/250cm, wave length:650NM±10, max output<5MW
Size: 16 x 16 x 3 cm



EQH 0006 Micrometer



Measures items up to 25mm in 0.01mm divisions. rugged, all-metal construction
Size: 14.5 x 6.5 x 3 cm

EQH 1009 Measuring tape



Size: 16 x 16 x 3.5 cm

EQH 6103 Tape



Plastic cased fi ber class tape measure
Measuring rang:0~30m,100ft.

EQH 0205-2 Mechanical Stop watch



EQH 0205-4 Stop watch



One row display, 1/100 seconds precision with lap counter, calendar & time, daily alarm, hourly chime, Snooze, big digital display, waterproof structure.
Size:71x64x18mm

EQH 0205-1 Mechanical Stop watch



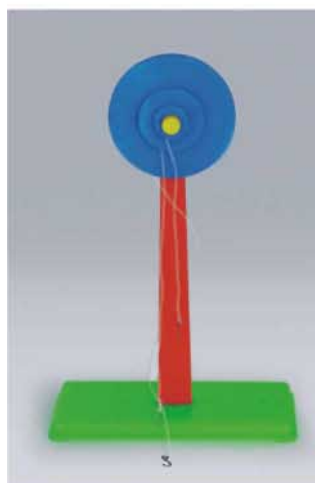
Superior-quality precision stopwatches with a highgrade steel spring mechanism and 13 jewels.
Enclosed in a wood casing lined with felt.
Min. Graduation:0.1sec.
Main dial:0~30×1sec.
Sub dial:0~30×0.5min
Non-stop working time:6 hours

EQH 2277 Microcosmic Explanation Air Pressure

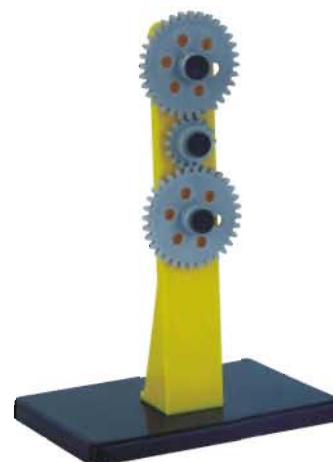


Size:13 x 15 x 24 cm

EQH 2121-1 Pulley



EQH 29008 Gear with stand



Size:13.5 x 9.5 x 20 cm

EQH 2125 Air Cushion Trail



Basic parameter and Specification:

- 1.The body of the air cushion train is adopted by pentagon duralumin material.
The length of the trail:120mm

- 2.The separation angle of the trail is 90°
- 3.Roughness on the working face of the trail:Ra3.2
- 4.The outer diameter of the trail air intake:30mm
- 5.The weight of the trail is around 4.5kg
- 6.The temperature of the working environment:-100C ~ +400C
- 7.Relative humidity: $\leq 85\%$
- 8.Air supply: air pressure>5800Pa
- 9.The size of the trail(cm):156*25*13

EQH 0108-B Balance



EQH 2126 Air resurce

it can be used with air tracks and gravity acceleration apparatus in the experiment
Main Technical Data

- 1.power:250W
 - 2.pressure:7600mm H2O
 - 3.Noise:<56db
- Size: 23 x 31 cm





500g



200g



100g

EQH 0105 Balance

A lever type balance, with two equal arms and two pans, attached with a sliding weight

EQH 0103-1 Physical balance



A lever type balance, with two equal arms and two pans, attached with a sliding weight 500g

EQH 0103 Physical balance

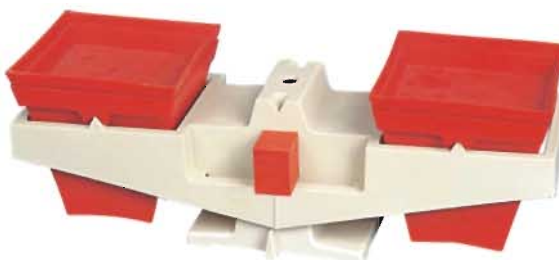


A lever type balance, with two equal arms and two pans, attached with a sliding weight 200g. Size: 38 x 12 x 14cm

EQH 0108-K Plastic balance



EQH 0108-A Elementary two-pan balance



The ideal teaching tool to introduce intermediate students to precision mass measurements.

EQH 0108-H-1 Number balance



EQH 0108-H-2 Combination Bucket/pan Balance



The large buckets and pans are useful to introduce your students to their first concepts of balancing. Students can compare the mass of Water and sand, shoes and bricks or a host of many other interesting materials.

EQH 0102 General Electronic Balance

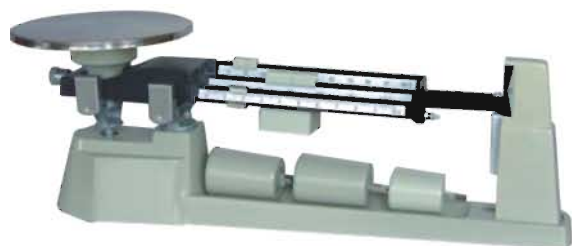


1



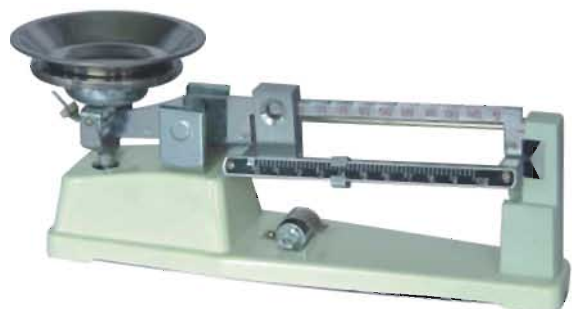
2

Readability	100mg
Capacity	100g, 200g, 500g, 1000g
Lineary	$\pm 0.1g$
Standard Weight	500g
Pan Size	130mm
	E=10d
Output	200V/50Hz
Temperature	10°C--30°C
Function	Tare,Calibration,Counting,Resize,Overload Allert "-----" (Line showing)



EQH 2001 Triple beam balance

It is made of high quality aluminium alloy, stain less steel, processes precisely, surface handles well, so the scales have stronger durability and economy, it is ideal weighing instrument in your lab.
Specification: Capacity: 2610g readability: 0.1g



EQH 2002 Double beam balance

It is widely suitable for physical-chemistry experiments and analytical weighings in chemical works, medical and hygiene, food-stuff, agriculture, textiles, electronics, mines, scientific research institutions, universities and colleges, etc.

Capacity: 200G Readability: 200MG

Main staff gauge: 10-90g Subaltern staff gauge: 0.2-10g

Pan size: Dia. 89mm



EQH 0104 Physical balance

Including weights:

50g	1pc	500mg	1PC
20g	2pcs	200mg	2pcs
10g	1pc	100mg	1pc
5g	1pc	50mg	1pc
2g	2pcs	20mg	2pcs
1g	1pc	10mg	1pc

Size: 23 x 11 x 6.5cm

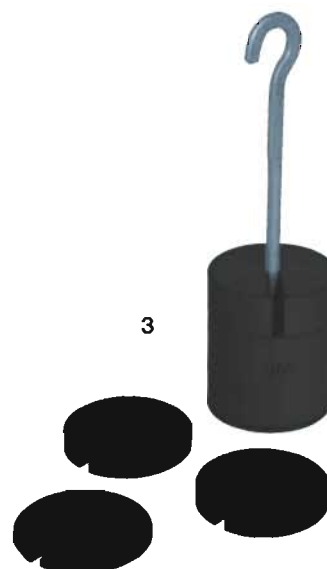
EQH 0037 Slotted Weights Set



Size: $\Phi 4$ cm



Size: $\Phi 4.5 \times 17$ cm



Size: $\Phi 5 \times 17$ cm

Weight holder with rod and hook for holding the slotted weights. Slotted weights with slot and bore hole, to be placed onto the weight holder. Weights in 2 colours, can be placed onto the weight holder in turns in order to allow to recognise the total mass of the resulting weight column even from a distance.

EQH 2106-4 Copper WeightsSet



Size: 17 x 9.5 x 6cm

EQH 2106-1 Weights



Size: 8.5 x 6.5 x 3cm

EQH 2106-2 Weights



Size: 14.5 x 9 x 3cm

EQH 2106-5 WeightsSet



EQH 2106-6 WeightsSet



Weight with hook	
10g	1pc
20g	2pcs
50g	2pcs
100g	2pcs
500g	1pc
1000g	1pc

EQH 1009-1 Distance Wheel

Range:9999.9m

Measuring accuracy:±0.5%

Display accuracy:0.1m

Main features:

- 1.Shift between metric and inch readings.
- 2.Data storage.
- 3.Data recall.
- 4.Humanized design,all the button is water and dust proof.
- 5.Stretchable handle,easy for storage.
- 6.Rubber covered measuring wheel to avoid slipping for higher accuracy.
- 7.Precision engineered to the highest quality.

Size: 70 x 17.5 x 8 cm



EQH 1009-2 Distance Wheel



Measures to (by cm) 10.000m

Weight in use 1.53KG

Precision engineered to the highest quality.

One person operation-automatically records measurements as you walk.

Suitable for builders,farmers,road contractors council,schools,real estate,police accident investigators.

Durable,lightweight and compact.the 300mm measuring wheel is easy to use. simply press the reset lever on the counter meter. the counter adds when the measurer is moving forward and subtracts in reverse.

Allowing the operator to correct a measurement if over steps his mark.

The mechanical countin head,ha a fi ve digit read out.come complete with inbuilt torch light facility for night use.and a durable canvas carry bag.

Size: 47 x 33 x 15 cm



EQH 1009-3 Distance Wheel

1.12.5 Dia, wheel&zero PT.Indicator

2.Large easy-read 6-digit display

3.Easy storage folding handle

4.Folding kickstand and dirt scraper

5.Protective carrying pouch

Size: 53 x 41 x 15 cm

EQH 0038

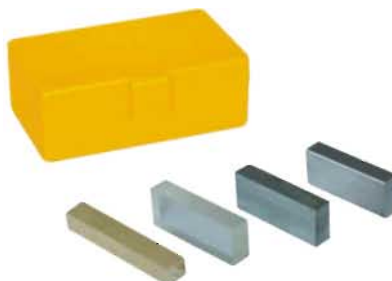
Plastic, Aluminium Metal, Wood Bar



To determine the density of different materials. Same weight, different volume

EQH 0038-1

Plastic, Aluminium Metal, Wood Bar



To determine the density of different materials. Same size, different quality.

EQH 2107

Standard Cylinder Set



For determining the density and specific heat of matter. Comprising three pieces of cylinders made of copper, iron, and aluminum respectively, with same diameter of 20mm and same height of 32mm.



EQH 2156-1 Motion of free falling

- 1.A.C-D.C:Carries conveniently, the aluminum column has the scale division, the survey is accurate
- 2.Photoelectric timer:The interior is loaded with 4 fi vedry cell batteries, the base has magnetism, survey scope oms-9999ms, precision 1ms.
- 3.Two of electric eye: It has the scale division target,may walk upstream the aluminum column.
4. Electro-magnet and place: It is loaded with the lead plumb bob which can be revolved.
- 5.Aluminum column:120cm high, is printed with the scale division.
- 6.Foundation:Cast iron baking varnish three prismoids, three adjusting screw.
- 7.One of Crown adsorption plate, fi ve of steel ball.

EQH 2129 Hand Operated centrifugal rotating device

It used for driving a large number of laboratory appliances to demenonstratethe centrifugal movement or any other apparatus that must be set into rotaion bureau experiment.It consists of a triangular cast iron frame, which is set horizontally
Size: 23 x 24 x 47cm





EQH 2112 Hydropress Model

Comprising two connected transparent cylinders fitted with pistons and manometer, for demonstrating the construction and working principle of the hydraulic press.
Size: 30 x 13 x 30cm



EQH 1009 Hand Driven Centrifugal Precipitator

For separating the precipitates by means of the hand driven centrifugal mechanism in chemical experiments.
Size: 17 x 15 x 30cm



EQH 2130 Centripetal Force Demonstrator

It is suitable for checking the formula of the centripetal force in physics laboratories. This apparatus utilizes a method to compare different centripetal force between two balls moving in the circle with different radius, different revolution speed and different mass and directly to demonstrate and check the formula.
Size: 46 x 30 x 24cm



EQH 2181 Model Of Water Pump

It is made up of two pumps, one is pressure type and the other is drawing-in type. To explain the construction and working principle of the pump.
Size: 30 x 15 x 18cm



EQH 2619 Drying apparatus

Power:240W

Surface made of stainless steel, inner heat style separately control cold air and hot air

Size: 37 x 27 x 38cm



EQH 2255 Petrol engine model

Model of 4-stroke engine, made of metal. Hand operated to demonstrate intake, compression, power, exhaust of 4-stroke engine.

Size: 17 x 12 x 28cm



EQH 1017 Pump Plate(Contains Bell)

When it is used with pump, a space of thin air can be produced. It can be used to teach physics in middle school, or to teach nature science in primary school. The vacuum pump is not included.



EQH 2256 Diesel engine model

Model of 4-stroke engine, made of metal, hand operated, for demonstration of intake, compression, power and exhaust of a four-stroke engine. The ignition is shown by means of the small indicating lamp flashing at power moment. Mounted on baseplate.

Size: 17 x 12 x 28cm



1

Vernier calipers plastic case packing
Size: 23.5 x 9 x 2 cm



8

Vernier calipers plastic case packing
Size: 150mm



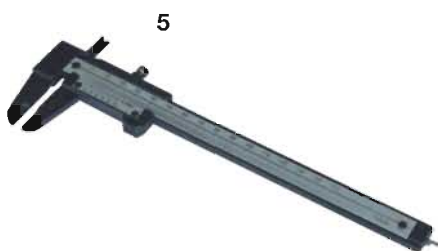
3

Vernier calipers plastic case packing

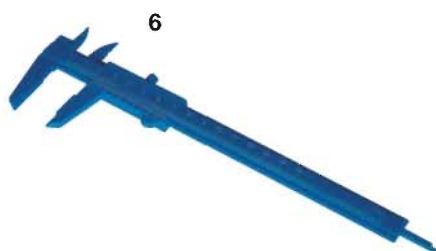


4

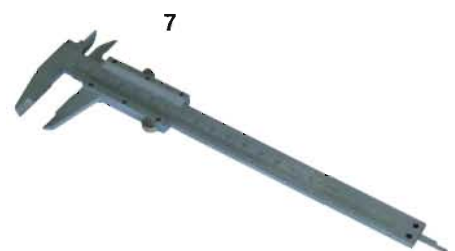
Vernier calipers plastic case packing
Measuring range: 0~125mm/or 150mm
Measuring accuracy: 0.02mm/or 0.05mm



5



6



7

Vernier calipers plastic case packing



200ml	200ml	1000ml	200ml
0-5ml	2-200ml	100-1000ml	1-10ml



EQH 02090 Micro Pipets, digital

Micro, digital pipets work on an air displacement principle. You preset the amount to be delivered and push the plunger. The preset amount of liquid is delivered to your receiving container. A special grip enables you to comfortably repeat the process.

A precision micrometer enables you to set the volume. Rotate the micrometer to change the volume within the range of each pipet.

EQH X8295 Demonstrator of Temperature Circle



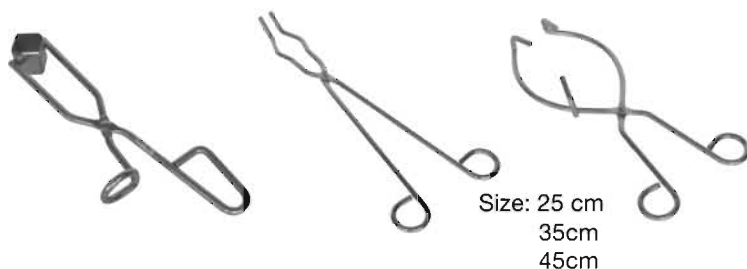
Size: 36 x 24 x 22 cm

EQH SW0130 Rubbing fi lter



Size: 36 x 24 x 22 cm

EQH 6402 Crucible tong(bowed type)



EQH 6403 Beaker tong



For beakers, fl at hinge, overall length:275mm

EQH 1104 Burette Double Clamp(Alloy, Plastic Plated)



Hold two burettes. Spring-loaded self-closing jaws clamp the burettes in right, upright position without observing graduation. Central boss allow to mounting on rods up to 14mm diameter.

EQH 2692 Cross clip



Natural finish alloy with nickel plated brass tommy screws. Will attach to retort rods up to 16mm diameter.

EQH 1011 Cork Drill

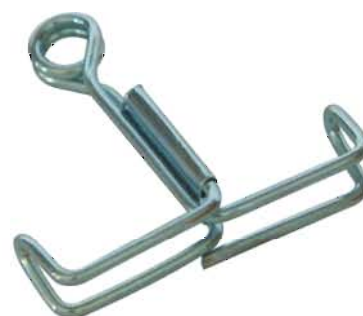


Made of steel pipe,chrome plated,7pcs/set.Dia of the tube:12mm/11mm/10mm/8mm/6mm/4mm,with rod for cleaning. For drilling holes in cork or rubber stoppers.

EQH 1103-14 Support Ring



EQH 1103-9 Tubing Clip



EQH 1103-8 Hoffman Side Hinged Clip(Brass Or Alloy)



Hoffman type, bottom hinged and nickelplated brass, Allow variable flow regulation.

EQH 1103-13 Metal nipper



EQH 1103-10 Drop stoping clip

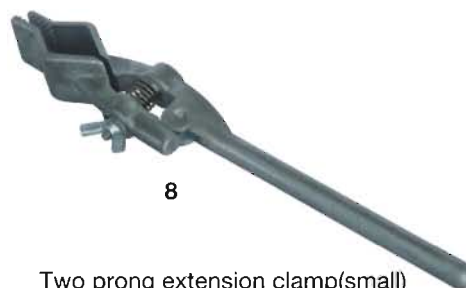


EQH 1103 Clamp



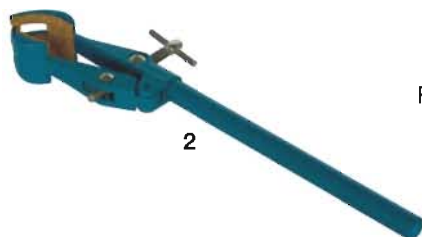
1

Universal Steel Clamp(Large, Medium)



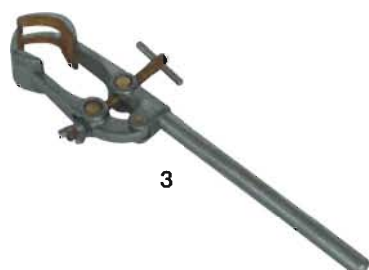
8

Two prong extension clamp(small)



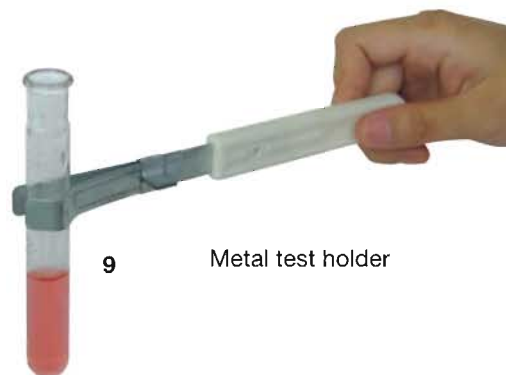
2

Four finger extension clamp



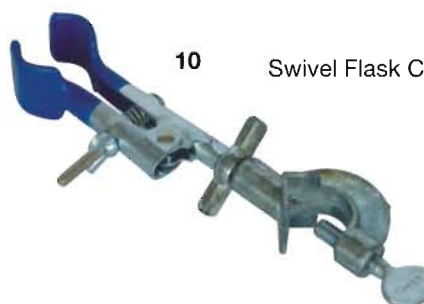
3

Four finger extension clamp



9

Metal test holder



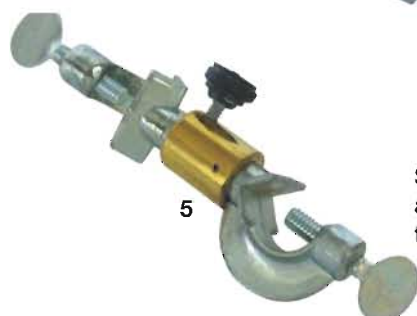
10

Swivel Flask Clamp



4

Diecast aluminium corl lined interlocking jaws with stainless steel shaft, Accepts up to 100mm diameter. Rod diameter 8mm.



5

Swivel Clamp Holder Rotates a full 360 degrees, Fits rods up to 18mm in diameter



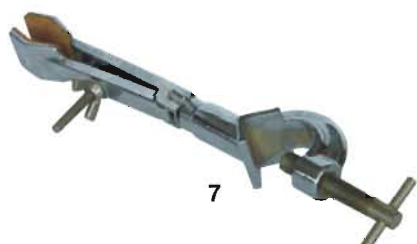
11

Three Finger Extension Clamp (Small) Plastic coated stamped steel clamp with three PVC coated prongs. For Dia. From 0 to 30mm. stem Dia: 8mm



6

Swivel Flask Clamp



7

Two-prong Swivel Clamp Swivel clamps with double PVC coated prongs to accommodate articles at any angle. Chrome plated zinc alloy. For diameter from 12 to 45mm

EQH 2692-1

US Type Bunsen Burner

Adjustable Bunsen burners. With threaded needle valve. They feature aluminum mixing tubes for thorough air/gas mixing, and tapered serrated gas inlet connections for easy tube mounting. Bases are nickel plated, die cast zinc alloy.



EQH 2692-2

Gas Burner



EQH 2692-3 Gas Burner



Nickel-plated brass tube and gas inlet tube mounted on baking finish cast iron base

EQH 2692-4 Test-tube heater



Test-tube heater is used for heating the test-tube by the electricity to operated the experiment.

EQH 6442 Spoon/Spatulas



EQH 6442-1 Spoon/Spatulas



EQH 2692-5 Leyden jar



EQH 2710 Dissecting Plate



Made of alloy or stainless steel. Without wax

EQH 107-1 Alcohol burner



50ml
100ml
150ml



EQH 107 Spirit burner

The base of the burner is a brass spirit container, on the top of which is a burner tube. round the lower end of the burning, the heat vaporizes the spirit in tube, and the alcoholic vapour provides flame temperature up to 1000°C. By the side of the burner tube is an air adjuster, which controls flame temperatures. Used for experiments that need higher temperatures.

EQH 107-2 Alcohol burner



EQH 6441 Combustion Spoon





EQH 1108-1 Physical test support



EQH 1108
Physical test support
multi-purpose

A shape base 1set
large ring 1set
table clamp 1set
test-tube clamp 1set
experiment pole 2set
experiment medicament tray 1set

EQH 1102-4 Multi-purpose test support



Base 1set
Base pole 2set
Iron large ring 1 set
Middle ring 1set
Small ring 1set
Vertical clamp 3set
Horizontal clamp 1set
Test-tube clamp 1set
Pole 2set dia:10mm,Length:600mm
Three finger clamp 1set
This instrument is used in the teaching
of physic and chemistry class



EQH 1102 Physical test support



Base 1set
Pole 1set
Large ring 1 set
Small ring 1set
Test-tube clamp 1set



EQH 1102-1 Physical test support



EQH 1102-2 Physical test support



EQH 1102-3 Physical test support



EQH 1102-5
Physical test support



EQH 1102-6
Physical test support

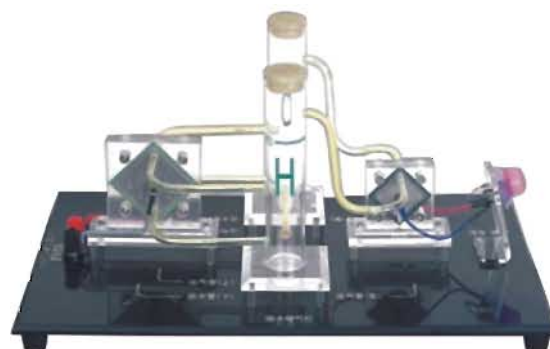


EQH 1102-7
Physical test support



EQH 2486 General Instrument SCM System

SCM comprehensive training system have simulation and digital input module, MCU module, keyboard LCD display module, analog and digital output module four components, each of the above components are the most practical and most classic circuit. And the use of the latest and most popular electronic device can ensure that the experiment is very real, and achieve the effect of intensive training.



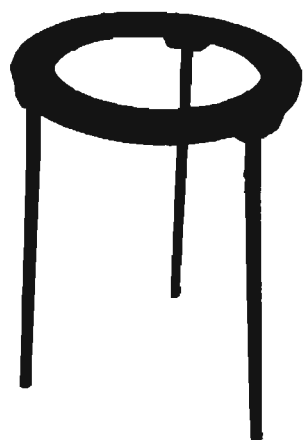
EQH 2606 Gas from the electrolysis of water model

Power supply:	7.5V/1500mA
Power of electrolyser:	2W
Hydrogen production:	10.5ml/min
Oxygen production:	5ml/min
Voltage of fuel cell:	0.7V
Power of fuel cell (H ₂ /O ₂):	500mW
Load:	100mW
H*W*D (mm):	200X230X390
Weight:	2.5kg



EQH 2561 Magic light

Glass bulb is filled with gas under low pressure, the glow is caused by the strong electrical Field generated by the high voltage transformer in the plastic base, diameter of the globe Approx 15cm



1

Inner diameter:7.5x15.5cm



2

Inner diameter:7.5x15.5cm



EQH1105 Tripod stand iron

It made of duralumin.
Inner diameter:8.5*15cm
It used in the chemistry class



EQH 6433 Ceramic Plates

Iron wire and square shape.
tripod stand not included



EQH 6434 Clay covered iron wire

Iron Triangles made from galvanized
iron wire, with porcelain pipe
stemming to reduce wire
sagging and oxidation.



1



2

EQH 1110 Lifter

Ideal for supporting or elevating beakers, fl asks, water baths,
stirrers, and other lab equipment. Handle conveniently converts
to a locking device once the desired elevation is reached.
Supports loads up to 10 kg. made of high strength chrome-plated
steel to provide dependable service.
Platform measures: 150*150mm elevates to 250mm, 200*200mm elevates to 280mm



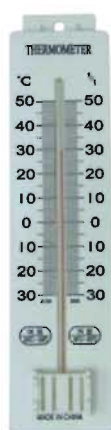
EQH6071-1
Plastic thermometer



EQH6071-2
Plastic thermometer



EQH6071-3
Plastic thermometer



EQH6071-4
Plastic thermometer



EQH6071-5
Plastic thermometer



EQH 6071-6
Plastic thermometer



EQH 6071-7
Wooden thermometer



EQH S2292
Max/Min Thermometer



EQH 2270-1
Psychrometers



EQH 2270-2
Psychrometers



EQH 2270-3
Psychrometers



EQH 0302
Demonstration thermometer



EQH 2270
Hygrometer with support



EQH 4077 Max-min thermo hygro & clock
Temperature range:
Indoor: -10~40°C (-14~104°F)
Out door: -50~70°C (-58~158°F)
R.H. range: 25%~98%
Battery: popular 1.5V×1, AA size



EQH 4077-1
Temperature / Clock / Humidity clock
Size: 17x13x3cm



EQH 6071-11
Thermometer



EQH1106-11
Plastic test tube rack



EQH1106-12
Plastic test tube rack



EQH1106-14
Plastic test tube rack



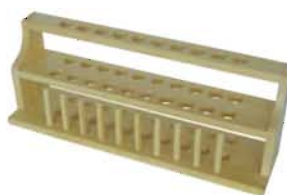
EQH1106-15
Plastic test tube rack



EQH1106-2
Wooden test tube rack



EQH1106-17
Wooden test tube rack



EQH1106-18
Wooden test tube rack



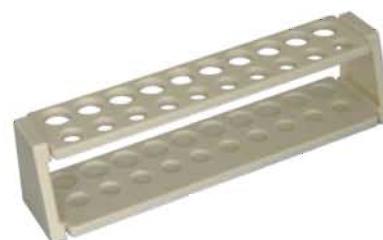
EQH1106-19
Plastic test tube rack



EQH1106-8
Metal test tube rack



EQH1106-13
Plastic test tube rack (6 holes)

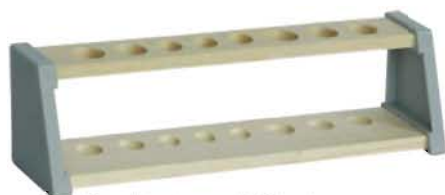


EQH1106-25
Wooden test tube rack

EQH1106-16



Test tube rack 6 holes
Plastic frame, wooden shelf



Test tube rack 8 holes
Plastic frame, wooden shelf



Test tube rack 12 holes
Plastic frame, wooden shelf

EQH64063

Rubber pipette filler, ear syringe

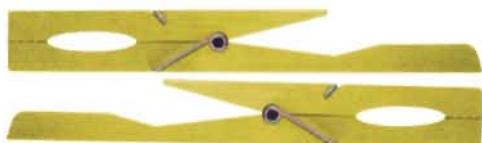
EQH64063-1
Latex nipple



EQH 1106-9 Plastic test tube rack (12 holes)



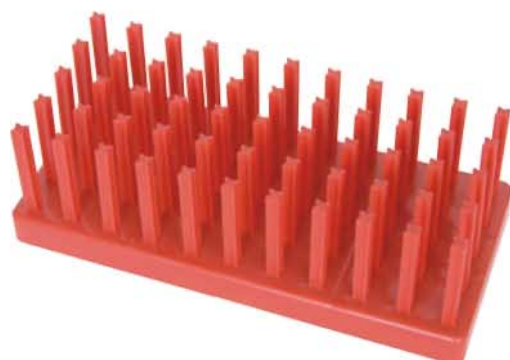
EQH 64006 Test tube holder (25mm)



EQH 1106-10 Plastic test tube rack



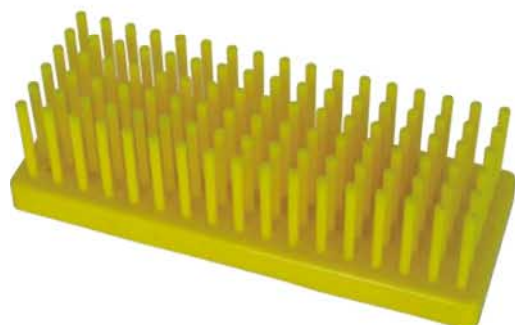
EQH 1106-21 Plastic test tube rack

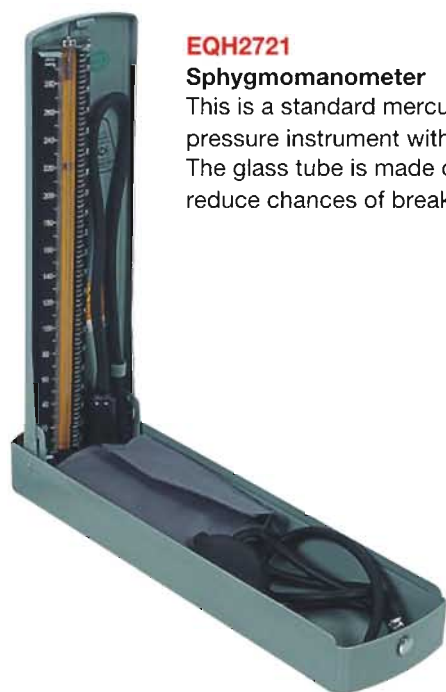


EQH 1106-20 Tank with test tube rack



EQH 1106-22 Plastic test tube rack





EQH2721

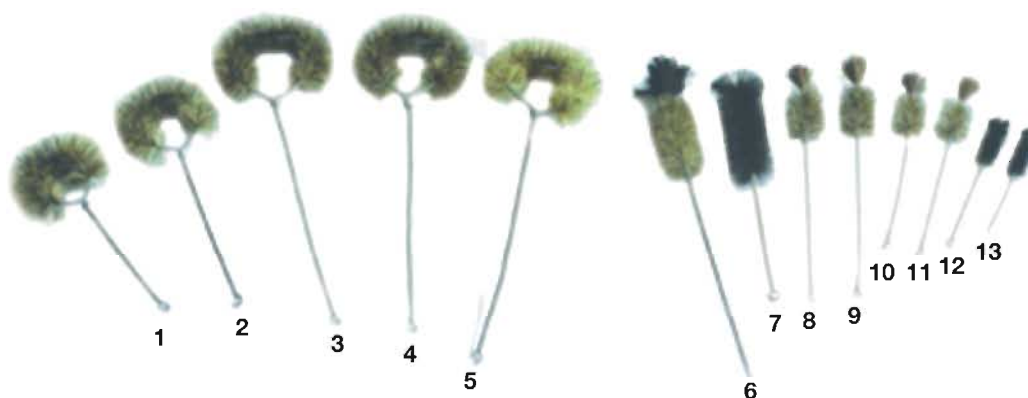
Sphygmomanometer

This is a standard mercury column blood pressure instrument with a 300mm scale. The glass tube is made of heavy glass to reduce chances of breakage.

EQH 2722 Stethoscope



Dual purpose chest piece It is possible to monitor heart beat and respiratory movements with the diaphragm (47mm diameter), while the bell 130mm diameter is for listening to the pulse in the arm. Earpieces are metal and are fitted with plastic ear plugs.



EQH 6472 Flask brush

Test tube brush

EQH 2620 Test Tube Cleaning Device



EQH 1107-1 Funnel rack



EQH 1107-2 Funnel rack





EQH 6012

Plastic Measuring Cup

50ml, 100ml, 250ml, 500ml, 1000ml



EQH 6012-1

Plastic measuring cup with handle

600ml, 1000ml



EQH 6012-3

Plastic Measuring Cup

2000ml



EQH 1611-1

Plastic measuring cup cone shape

50ml, 100ml, 250ml



EQH 81251

Plastic measuring cylinder

2000ml



EQH 6012-2

Plastic measuring cup with handle

1000ml



EQH 1601

Plastic Measuring Cylinder

10ml, 50ml, 100ml, 250ml,
500ml, 1000ml



EQH 81252

Plastic measuring

hexagon shape
1500ml