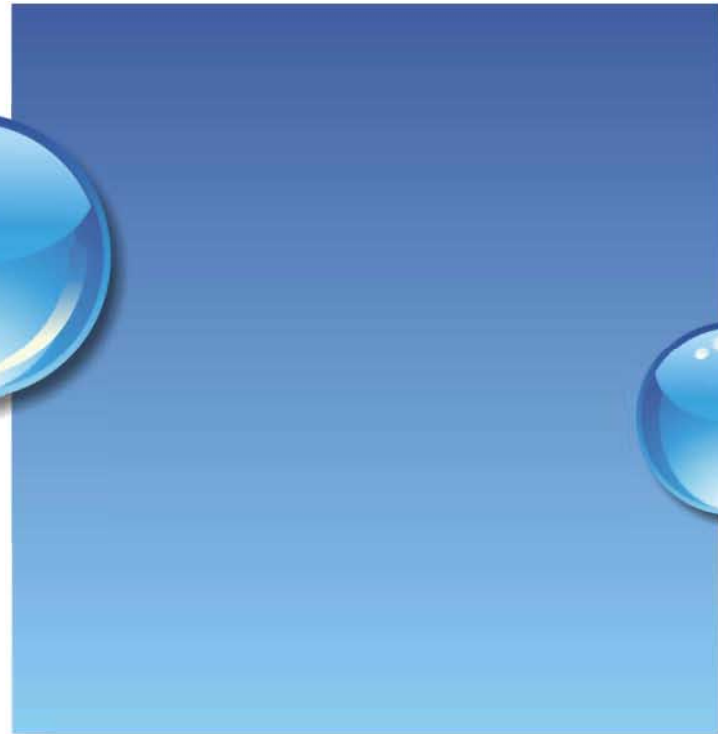


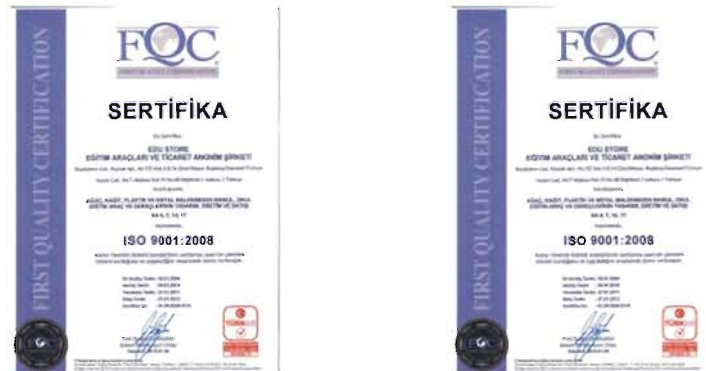
**eduStore®**

eğitim araçları a.ş.

[www.edustore.com.tr](http://www.edustore.com.tr)



“The origin of our main idea is that the more information the more educated people.”  
**Edu Store A.Ş.** is targeting to be a spearhead in the field of education and development of young minds who can solve problems and become qualified succesfull individuals who will become pillars of the community. We take pride in the fact that we contribute to education of usefull, intelligent and important members of **Future Generations.**





## EQH3302

### Model of human skeleton(170cm)

Tall:170cm. Correctly articulated to show the normal posture. Consists of a 3-part skull, a cut calvarium and a removable spring- held mandible. The upper and lower extremities are removable. Rod supported, on stand. Size(cm): 96x46x29



## EQH3302-1

### Model of human skeleton(170cm)

Same as the EQH3302, except the left hand side is painted to show the muscle origins in red and insertions in blue. Rod supported, on stand. Size(cm): 96x46x29

## EQH3302-7

### Mini-skeleton(18cm)



1



2

## EQH3302-6

### Mini-skeleton(42cm)



1



2

Special features include a movable jaw on spring, a skull whose top half opens for a look inside, arms and legs that are removable for individual study. Made of washable and unbreakable PVC plastic. Plastic stand included. The nerves and arteries are painted in the left side. Tall: 42cm. Size(cm): 12x12x42



Tall: 42cm. An excellent type for close study. Correctly shows the details. Arms and legs are removable. On plastic base. Size(cm): 27x15x9



**EQH3302-3**  
**Model of human skeleton(85cm)**  
 Size(cm): 45x20x13



**EQH3302-4**  
**Model of human skeleton(85cm)**  
 Size(cm): 45x20x13



**EQH3302-5**  
**Model of human skeleton with nerves(85cm)**  
 Size(cm): 45x20x13



**EQH3320**  
**Model of transparent human(85cm)**  
 Size(cm): 88x39x18



**EQH3320-1**  
**Model of transparent human(42cm)**  
 Size(cm): 41x15x9

## EQH3302-3 Human Skeleton

Tall: 85cm. About half life size. It is easy to be carried from one place to other place. The hand bones and foot bones are cast in one piece. Other bones are articulated. Skull has a calvaria and a spring- held mandible. Arms and legs are removable for close study. On plastic base. Size(cm): 45x20x13

## EQH3302-4 Human Skeleton

Same as EQH3302-2, except cartilage of the costal are painted in light blue. On stand plastic base. Size(cm): 45x20x13

## EQH3302-5 Human Skeleton With Nerves

Tall: 85cm. Same as the EQH3302-2. The nerves and arteries are simulated in the left side. Size(cm): 45x20x13

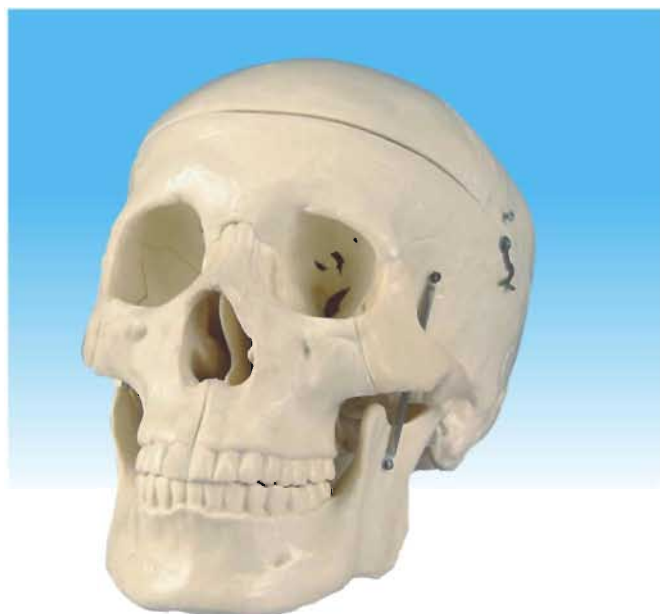
## EQH3320 Transparent Human

Tall: 85cm. About half life size. Consists an entire skeleton same as EQH3302-3. The internal organs: lung, heart, stomach, intestine, kidney , bladder etc are removable. The out layer is made of rigid plastic and could be dissectible into front and rear pieces which can be remounted. On stand with plastic base.



These adult skull models are suitable for the teaching lecture in medical and sanitary colleges and middle graded nurse's schools.

## EQH3392 Model of adult skull



Plastic bone clour skull with hinged jaw and removable calvarium.  
Size(cm): 22x11x15

## EQH3392-11 Model of skull bones



This highly detailed human skull is disarticulated into many sections. The calvarium is sectioned horizontally with the lower jaw hinged. The basal portion of the skull has been sectioned sagittally, displaying all 3 sinuses.

## EQH3392-2

Didactic skull on cervical spinal column, 4-part



This model uses different colors to demonstrate the shapes and relationships of the various bone plates of the skull. Flexibly mounted on the cervical spine, this model also exhibits the hindbrain, spinal cord, spinal nerves of the cervical spine, vertebral arteries, basilar artery and rear cerebral arteries. Mounted on a stand.

Size(cm): 15x15x30



## EQH3392-3 Human Skull

Cast from a natural bone specimen, this model contains detailed suture lines, fissures and fossae. Features include a removable calvarium cap, breakaway maxilla and hinged mandible. Each bone is painted a different color for easy identification and the names have been hand lettered. For 170cm skeleton.



## EQH3392-4 Human Skull

Cast from a natural bone specimen, this model contains detailed structure lines, fissures and fossae. Features include a removable calvarium cap, breakaway maxilla and hinged mandible. Each bone is painted a different color for easy identification. For 85cm skeleton.

Size(cm): 10x10x13.5



Berto man skull



Stein hein man skull



Olduvai man skull



Peking man skull



Chimpanzee skull



Neanderthal skull



Rhodesian man skull



Cromagnon man skull

## EQH3392-12 Skull model of 8 kinds human race

These models are shows the human skull evolution in the development of the human, and illustrated the difference of the human and ape in different ages.

**EQH 3304-12 Model of human heart (mini size)**



Proving consumers basic but precise knowledge of amazing human organs structure. Igniting consumers in exploring wider & deeper scope of this profound study. Combination of puzzle toys with highly detailed miniature medical models to serve educational purposes in a challenging and fun way. Inspiring the curiosity and appreciation of our creator in heaven.

**EQH 3307-7 Model of human brain (mini size)**



Proving consumers basic but precise knowledge of amazing human organs structure. Igniting consumers in exploring wider & deeper scope of this profound study. Combination of puzzle toys with highly detailed miniature medical models to serve educational purposes in a challenging and fun way. Inspiring the curiosity and appreciation of our creator in heaven.

**EQH 3310-8 Model of human ear (mini size)**



Proving consumers basic but precise knowledge of amazing human organs structure. Igniting consumers in exploring wider & deeper scope of this profound study. Combination of puzzle toys with highly detailed miniature medical models to serve educational purposes in a challenging and fun way. Inspiring the curiosity and appreciation of our creator in heaven.

**EQH 3392-5 Model of human skull (mini size)**



Proving consumers basic but precise knowledge of amazing human organs structure. Igniting consumers in exploring wider & deeper scope of this profound study. Combination of puzzle toys with highly detailed miniature medical models to serve educational purposes in a challenging and fun way. Inspiring the curiosity and appreciation of our creator in heaven.



**EQH 3340-1 Model of human hand (mini size)**



Proving consumers basic but precise knowledge of amazing human organs structure. Igniting consumers in exploring wider & deeper scope of this profound study. Combination of puzzle toys with highly detailed miniature medical models to serve educational purposes in a challenging and fun way. Inspiring the curiosity and appreciation of our creator in heaven.

**EQH 3324-6 Model of human mussel (mini size)**



Proving consumers basic but precise knowledge of amazing human organs structure. Igniting consumers in exploring wider & deeper scope of this profound study. Combination of puzzle toys with highly detailed miniature medical models to serve educational purposes in a challenging and fun way. Inspiring the curiosity and appreciation of our creator in heaven.

**EQH 3339-5 Human pregnant uterus (mini size)**



Proving consumers basic but precise knowledge of amazing human organs structure. Igniting consumers in exploring wider & deeper scope of this profound study. Combination of puzzle toys with highly detailed miniature medical models to serve educational purposes in a challenging and fun way. Inspiring the curiosity and appreciation of our creator in heaven.

**EQH 3301-27 Model of human torso (mini size)**



Proving consumers basic but precise knowledge of amazing human organs structure. Igniting consumers in exploring wider & deeper scope of this profound study. Combination of puzzle toys with highly detailed miniature medical models to serve educational purposes in a challenging and fun way. Inspiring the curiosity and appreciation of our creator in heaven.

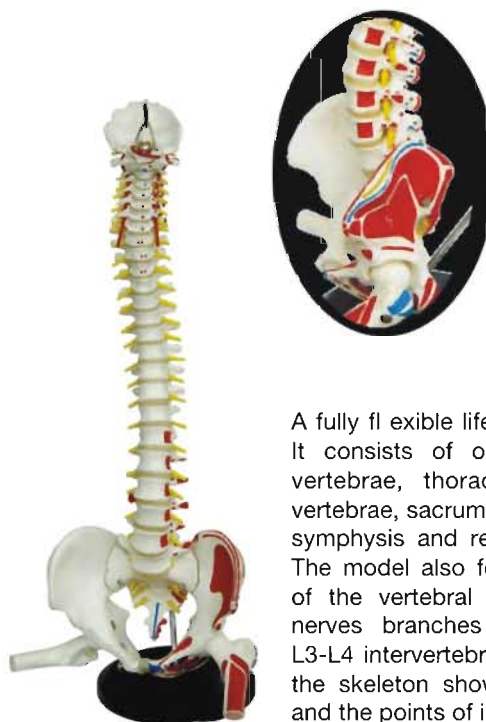


## EQH3393 Human Vertebral Column and Pelvis



Life size. Fully articulated to show the detail features of each vertebrae, and the relationship of the vertebral column and pelvis. On plastic stand. Size(cm): 66x25x14

## EQH3393-1 Human Vertebral Column and Pelvis



A fully fl exible life size vertebral column. It consists of occipital plate, cervical vertebrae, thoracic vertebrae, lumbar vertebrae, sacrum, coccyx, full pelvis with symphysis and removable femur heads. The model also features representations of the vertebral arteries, of the spinal nerves branches and of a prolapsed L3-L4 intervertebral disc. The left side of the skeleton shows the points of origin and the points of insertion of the muscles, painted in red and blue. Rod supported, on plastic stand. Size(cm): 66x25x14



## EQH3393-2 Human Vertebral Column and Pelvis

A fully fl exible life size vertebral column. It consists of occipital plate, cervical vertebrae, thoracic vertebrae, lumbar vertebrae, sacrum, coccyx and full pelvis. It also features representations of the vertebral arteries, of the spinal nerves branches and of a prolapsed L3-L4 intervertebral disc. Mounted on a stand for hanging. Size(cm): 66x25x14

**Highly detailed, life-size models show all significant features for each vertebrae, including vertebral notch and spinal canal. Ideal teaching models for students, for patient education by chiropractors, orthopedic surgeons and other medical programs on lifting and bending.**



**EQH3393-4 Human Cervical Spinal Column**

Life size. Consists of an occipital bone of the skull, 7 cervical vertebrae with intervertebral discs, a segment of spinal cord and nerve branches. Flexibly mounted on stand, removable.

Height:19cm

Size(cm): 12x12x14



**EQH 3393-5 Human Thoracic Spinal Column**

Life size. Consists of 12 thoracic vertebrae with inter-vertebral discs, thoracic segment of spinal cord and nerve branches. Flexibly mounted on stand, removable.

Height:32cm

Size(cm): 12x12x32



**EQH 3393-7 Lumbar spinal column**

Consisting of the 5 lumbar vertebrae with intervertebral discs, sacrum with fl ap, coccyx, spinal nerves and spinal cord. on stand removable.

Height:34cm

Size(cm): 12x12x29



**EQH 3393-3 Human Vertebral Column With Skull**

Life size. Comes with an entire skull and pelvis. The skull has a calvaria cut and a spring-held lower jaw.

Size(cm): 44x18x12

## EQH 3334-4 Human Knee Joint



About half Life size. A fi xed type to show the general features of the knee joint. On base.  
Size(cm): 12x12x18

## EQH 3325-5 Human Elbow Joint



Life size. A fi xed type to show the general features of the Elbow Joint. On base.  
Size(cm): 8x12x20

## EQH 3335 Human Hip Joint



Life size. Articulated with fl exible material. The fl exion, extension, anteversion, retroversion, outward and inward rotation can be demonstrated. On base.  
Size(cm): 27x20x18

## EQH 3334-1 Human Knee Joint



Life size. A fi xed type to show the general features of the knee joint. On base.  
Size(cm): 12x12x34

## EQH3336-1 Big shoulder joint-functional model



An instructional model to illustrate abduction,adduction,anteversion,retro version and internal/external rotation. Includes fl exible,artifi cial ligaments.life size,on stand.  
Size(cm): 18x13x23

## EQH 3340-5 Skeleton model of human hand



## EQH 3341-7 Skeleton model of human foot





**EQH 3336-2**  
Shoulder joint-functional model



**EQH 3325-6**  
Human Elbow Joint



**EQH 3334-5**  
Human Knee Joint



**EQH 3335-3**  
Human Hip Joint



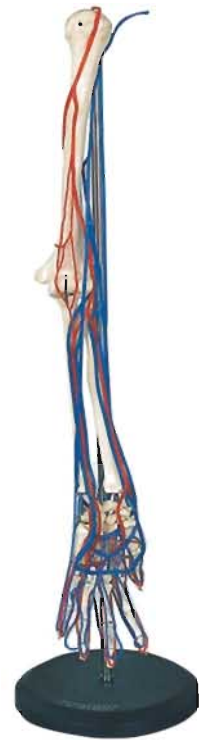
**EQH 3325-2**  
Big adult leg bone with  
innominate bone and three  
joints with ligaments  
Size(cm): 13x15x98



**EQH 3325-3**  
Big adult arm bone with  
scapula and clavicle and  
three joints with ligaments  
Size(cm)with: 15x15x80



**EQH 3325-4**  
Big adult Leg bone with  
blood vessel  
Size(cm): 21x21x80



**EQH 3341-12**  
Big adult arm bone  
with blood vessel  
Size(cm): 13x15x98





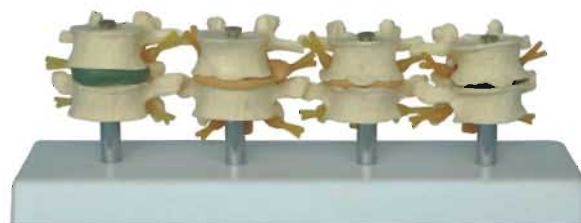
### EQH3336

**Big adult shoulder joint /muscle ligament painted**  
Size(cm): 18x13x23



### EQH3336-5

**West-desk type health muscle shoulder model with description**  
Size(cm): 18x14x25



### EQH3393-6

#### 4-Stage Degenerative Lumbar Set

An exceptional model demonstrates bone and disc degeneration. The vertebra pairs show from left to right: normal bone and disc; facet syndrome and a herniated disc; thin disc and the beginning of bone spurring; a seriously degenerated disc with bone fusing. Mounted on base.



### EQH 3335-1

**Big adult hip joint with muscle ligament painted**  
Size(cm): 18x13x23



### EQH3335-2

**Human muscled hip joint model**  
Size(cm):16x17x24



### EQH3393-9

#### Big vertebrae representation model

The model consists of 1st and 2nd cervical. vert.Two-thoracic vert.W/intervert.Disc.One lumbar W/herniated disc.The complete set consists of 8-parts  
Size(cm): 12x12x22



### EQH3393-10

#### Middle vertebrae representation model

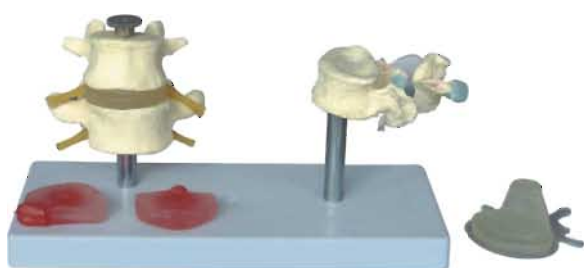
The model consists of 1st and 2nd cervical. vert.Two-thoracic vert.W/intervert.Disc.One lumbar W/herniated disc.The complete set consists of 8-parts  
Size(cm): 12x12x16



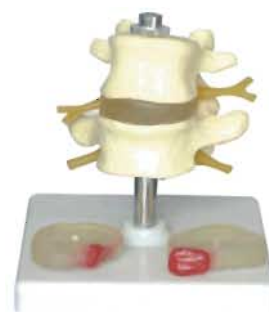
### EQH3393-11

#### Small vertebrae representation model

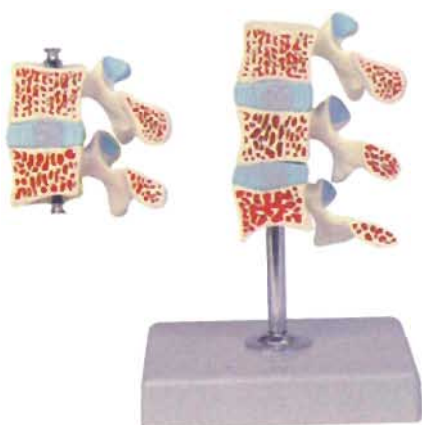
The model consists of 1st and 2nd cervical. vert.Two-thoracic vert.W/intervert. Disc.One lumbar W/herniated disc.The complete set consists of 8-parts  
Size(cm): 12x12x10



**EQH3393-13**  
Big knee set rupture and  
herniated disc demonstration



**EQH3393-8**  
Big knee set rupture and  
herniated disc demonstration



**EQH 3394-1** Cutaway osteoporosis

Consisting of 3 medially divided lumbar vertebrae w/intervertebral discs. For comparison, the upper section shows healthy bone structure. The middle section osteoporotic bone structure and the lower section advanced osteoporotic bone structure w/flattened plates, deformation and decreased mass. For detailed study the vertebrae can be removed from the std. Size(cm): 12x12x7.2



**EQH 3393-12** Big lumbar set w/3 disease discs w/std

2 lumbar vertebrae with spinal nerves, spinal cord and 2 replaceable dorso-lateral prolapsed discs between the 4th and 5th lumbar vertebrae. On stand, removable. Size(cm): 12x12x10



**EQH 3394-4** Femur bone  
showing the osteoporosis and blood vessel.  
Size(cm): 18x14x18



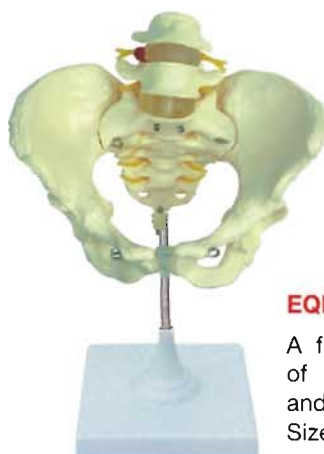
**EQH 3394-3** Giant femur bone

Giant femur head showing osteoporosis the head and upper end of an adult femur divided longitudinally and hinged. One half is normal, the other shows the effects of osteoporosis on the surface and structure of the bone. Mounted on base. Size(cm): 12x12x15



**EQH3337-1 Male pelvis**

A full skeleton of a male pelvis composed of the os coxae, the sacrum, the coccyx and symphysis. Natural size. Mounted on the base. Size(cm): 25x21.5x28



**EQH 3337-2 Female pelvis**

A full skeleton of a female pelvis composed of the os coxae, the sacrum, the coccyx and symphysis. Natural size. Mounted on a base. Size(cm): 25x17x20



**EQH 3337 Human Male Pelvis**

A full skeleton of a male pelvis composed of the os coxae, the sacrum, the coccyx and symphysis. Natural size. Mounted on the base. Size(cm): 12x12x28

**EQH 3337-3 Female pelvis**



Size(cm): 25x21.5x15

**EQH3393-13 Vertebrae representation model with plastic base**



1

Size(cm): 32x23x6



2

Size(cm): 27x20x6



3

Size(cm): 30x20x6

A worldwide unique high quality casting of original bones, which even represents the finest anatomical structures in great detail. It has the look and feel of a real bone, realistic weight. These vertebrae are particularly useful in medical education as replacement for real bones as well as for patient education. Supplied on a base.





## EQH3325 Human Functional Elbow Joint

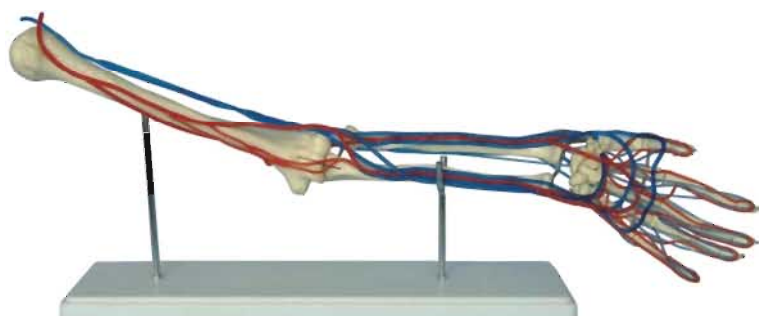
Life size. Shows the shapes and the correct origins and insertions of biceps and triceps. Biceps and triceps are made of flexible material, extension and flexion can be shown as well as the antagonist relationship of these two muscles. On base.

Size(cm): 68x14x9



## EQH3340 Anat model of palm

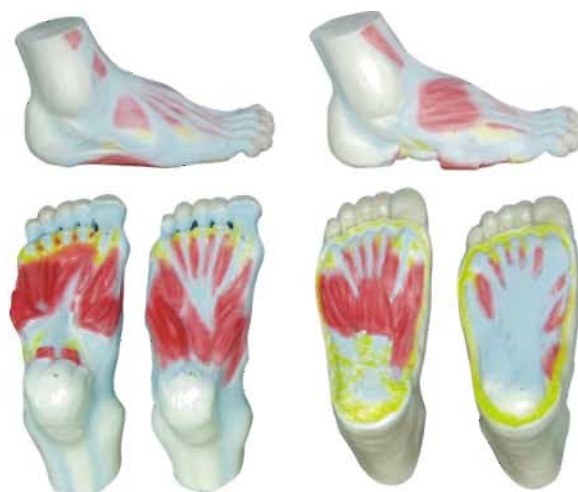
Size(cm): 24x23x10



## EQH3325-1 Human Upper Arm with Blood Vessels

Life size. Comes with the entire skeleton of the right arm which in half flexion. Arteries and veins like radial artery and vein, brachial artery and vein are simulated to show the whole blood circulation network in the arm. All the blood vessels are simulated according to their realistic ratios. On base.

Size(cm): 64x14x15



## EQH3341-10

Muscles, blood vessels and nerves of the sole of the foot

Size(cm): 32x22x12

Arching foot

Normal foot

Flattened foot



## EQH3341 Foot Set

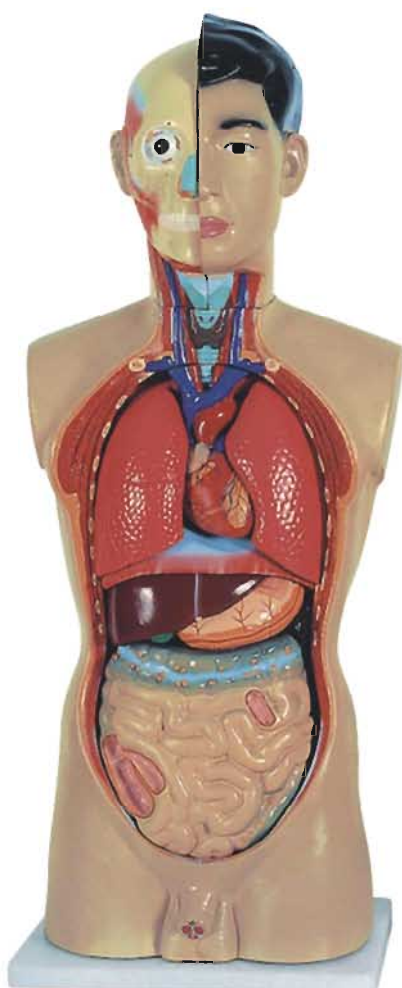
Life-size, finely detailed models of the foot depicting a flattened foot, an arching foot and a normal foot. Models are not dissectible. Each foot has 23 numbered parts.



## EQH3341-1 Foot set

Size(cm): 30x25x5



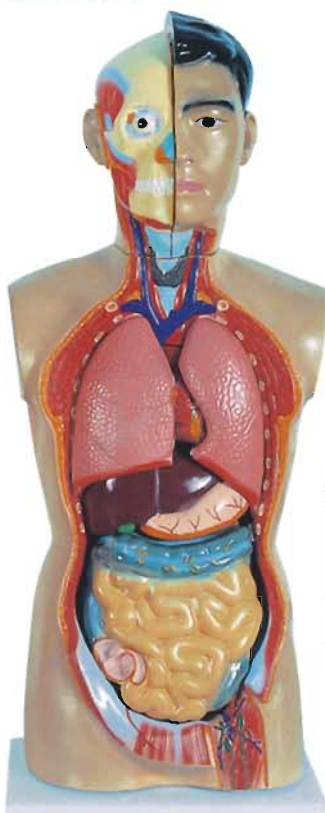


## EQH 3301 Human Torso

Life size, tall 85 cm. Dissectable into 18 parts. Lungs, heart, stomach, liver and intestines are removable. The head is detachable which separates into two parts and the right side brain is removable. Size(cm): 89x47x28

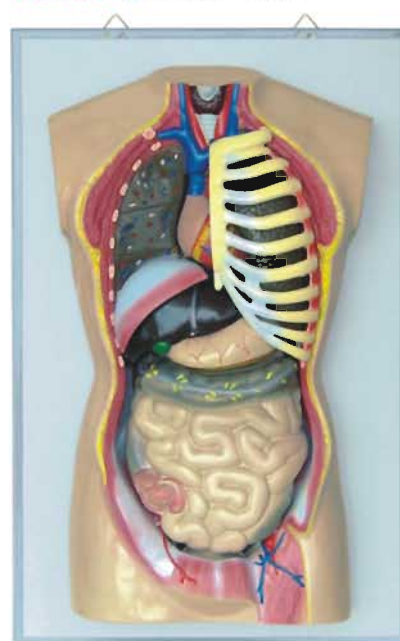
Head	2parts
Left lung	1part
Brain	2parts
Right lung	2parts
Heart	1part
Trachea	1part
Esophagus	1part
Pancreas	1part
Diaphragm	1part
Liver	1part
Stomach	1part
Intestines	1part
Bladder	2parts
Body	1part

## EQH3301-1 85cm Human Sexless Torso

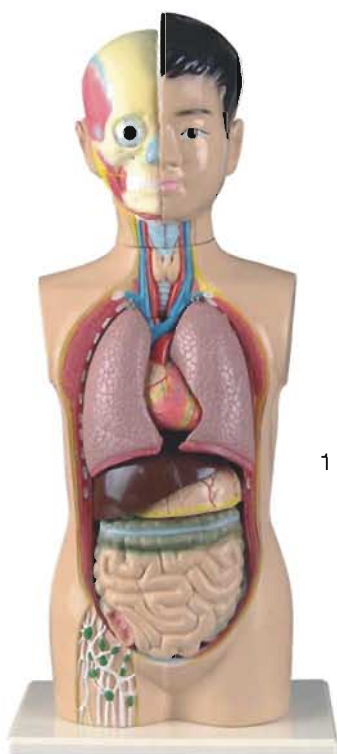


Size (cm): 89 x 47 x 28  
Life size, tall 85cm. Dissectable into lungs, heart, stomach, liver and intestines. The head is detachable. The right half brain is removable. On base.

## EQH3301-6 Human Torso

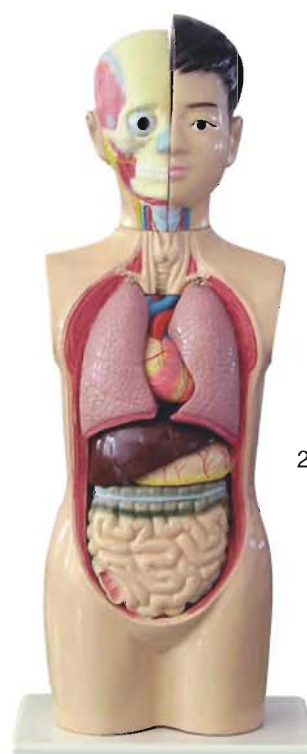


Dissectable into lungs, heart, stomach, liver and intestines. diaphragm, breastbone.  
Size(cm): 70x46x56



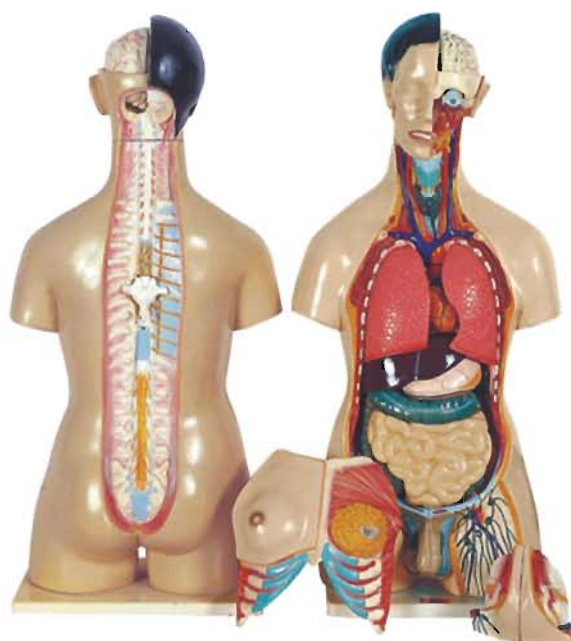
## EQH3301-2 Human Torso

Tall 65cm. Dissectable into following parts: head 2parts, body 1part, lung 2parts, heart 1part, liver 1part, stomach 1part, intestine 1part.



## EQH3301-2 Human Torso

Tall 70cm. Dissectable into following parts: head 2parts, body 1part, brain 1part, lung 2parts, heart 2parts, liver 1part, stomach 1part, intestine 1part, kidney 1part.



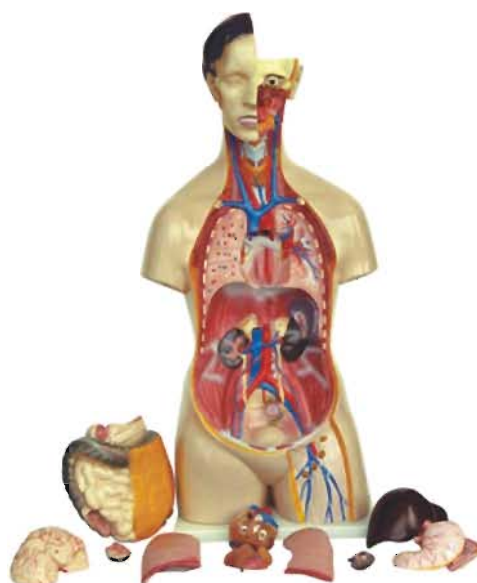
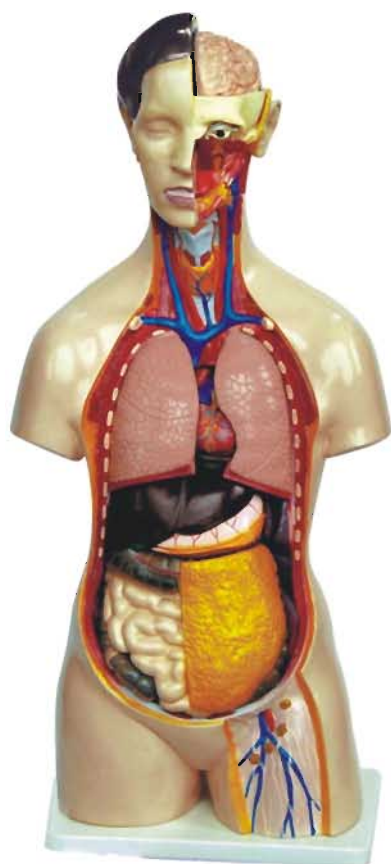
## EQH3301-3 Human Male and Female Torso

Life size. Dissectable into 23 parts. The head is detachable which separates into two parts and the left side brain is removable. The chest plate shows the breast on the right side and mammary glands on the left side. Male and female genital organs can be interchanged. The back is open to show the entire nerve cord and the relationship of the brain and the vertebrae. On base.  
Size(cm):89x47x28



## EQH3301-4 Human Male and Female Torso

It features female or male genitalia and so on. Dissectable into many parts: breast plate, head, eyeball, brain, vertebral spinal nerves, lung, heart, liver, kidney, stomach. They can give you all the details you want.  
Size(cm):89x47x28



## EQH3301-15

### 85cm Human Torso

14-parts

This popular school torso is supplied with the following removable parts:

3-part head

2 lungs

2-part heart

1-part Stomach

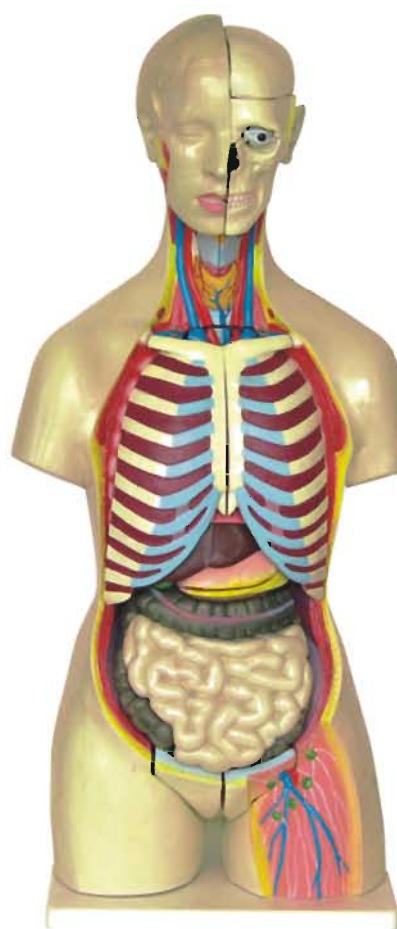
Liver with gall bladder

2-part intestinal tract

Front half of kidney

Front half of urinary bladder

Size(cm):89x47x28



## EQH3301-16

### 85cm Human Torso 44parts

Head 1part

Body 1part

Parietal bone 1part

Jaw bone 1part

Brain 1part

Eye 1part

Throat 2parts

Lung 4parts

Heart 2parts

Bronchia 1part

Oesophagus 1part

Septum 1part

Liver 1part

Kidney 4parts

Adrenal gland 2parts

Stomach 1part

Ascending colon 1part

Transverse colon 1part

Caecum 1part

Ileum 1part

Male genitalia 4parts

Female genitalia 3parts

Spleen 1 part

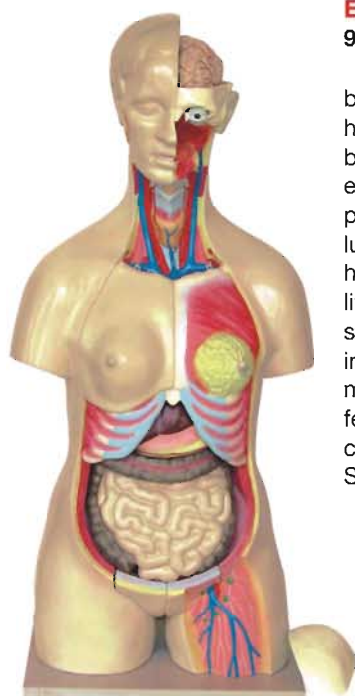
Vertebra 3parts

Inter vertebral disk 3 parts

Spinal cord 1 part

Size(cm):40x24x87





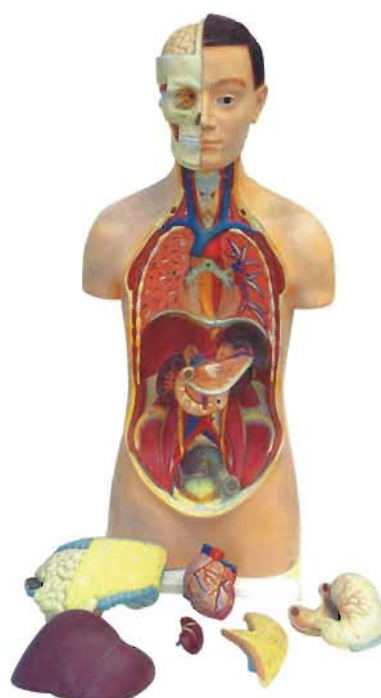
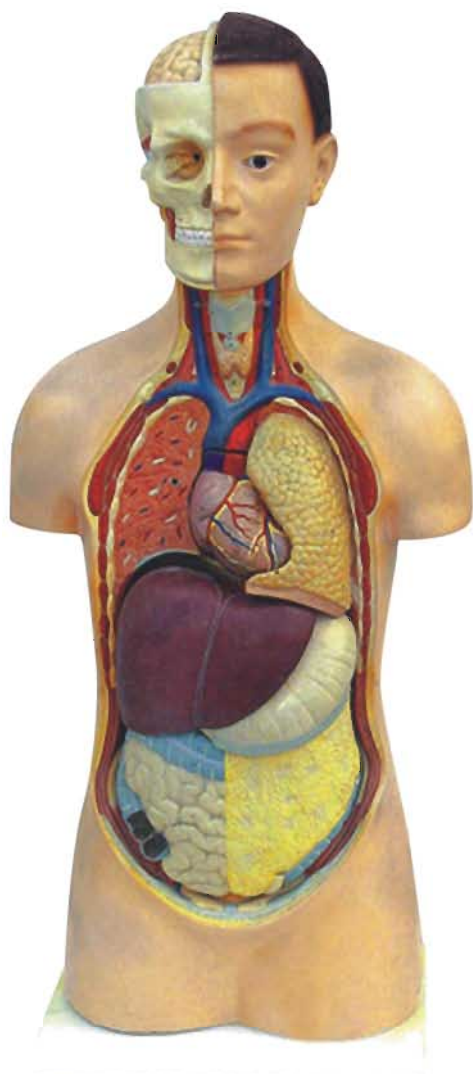
**EQH3301-25**  
**95cm Human Torso**

body 1part  
head 1part  
brain 1part  
eye 1part  
parietal bone 1part  
lung 2parts  
heart 2parts  
liver 1part  
stomach 2parts  
intestine 1part  
male genitalia 4parts  
female genitalia  
chest 1part  
Size(cm):40x30x28



**EQH3301-26**  
**95cm Human Torso Without Head**

body 1part  
parietal bone 1part  
lung 2parts  
heart 2parts  
liver 1part  
stomach 1part  
intestine 1part  
kidney 1part  
size(cm):34\*23\*65cm



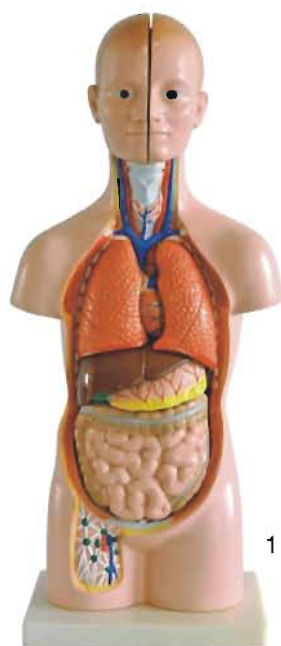
**EQH 3301-5**  
**85cm Human Torso (Unisex)**

These models of human torso have been the standards of excellence and quality in hospitals ,universities ,schools and labs for years .You can choose many mounting styles to suit your individual preference. These models are specially made for use as visual aids in teaching physiology and hygiene courses in middle schools.  
Size(cm): 34x23x90



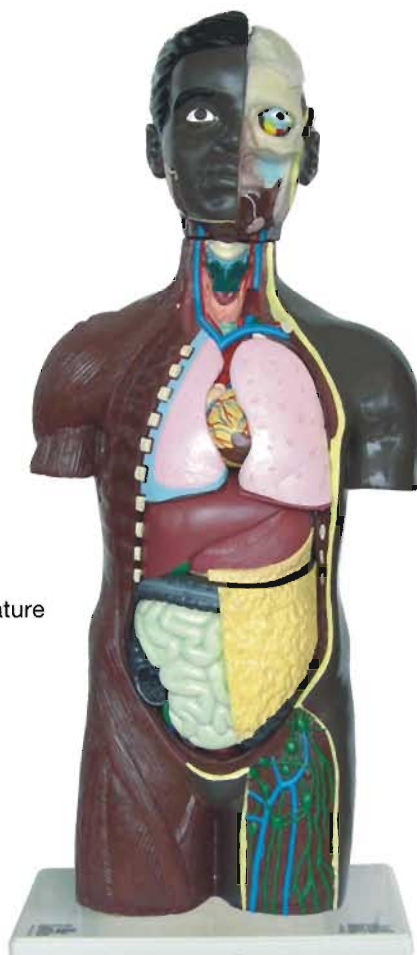
## EQH 3301-7 Human Unisex Torso

Tall 50cm. Dissectable into lungs, heart, stomach, liver and intestines. The head is detachable. On base. Size(cm):19x14x50



## EQH3301-8 85cm Unisex Torso

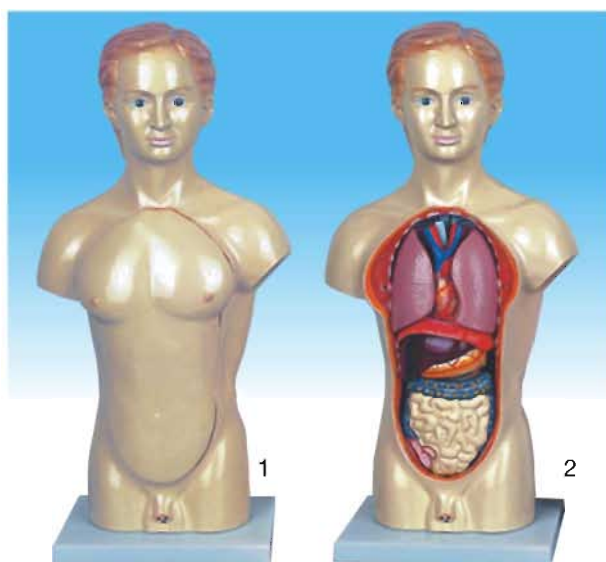
African- American unisex, Made from plastic. The feature of intestine fat layer is clearly shown. Size(cm):40x24x87



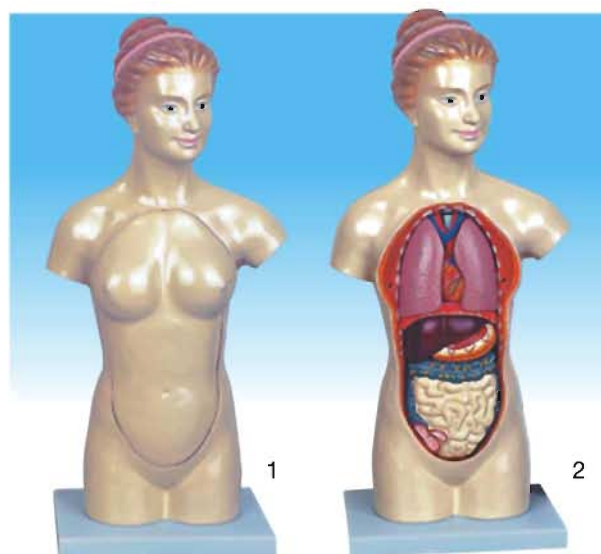
## EQH 3301-9 Miniature Human Male Torso

Tall 42cm. Dissectable into lungs, heart, stomach, liver and intestines and male organs. The head is detachable.. On base. Size(cm):19x14x42

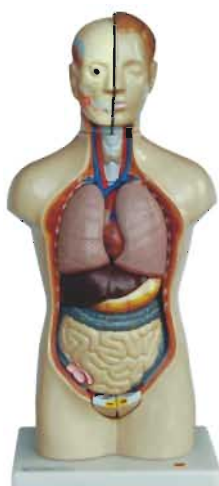




**EQH 3301-10 45cm Male Torso(14pcs)** Size(cm):19x14x45



**EQH 3301-11 45cm Female Torso(14pcs)** Size(cm):19x14x45



**EQH 3301-17 42CM Human Torso**

Miniature human torso

Dissectible into lungs,heart,stomach,liver,intestines and female organs.the head is detachable. on base. Size(cm):19x14x42



**EQH 3301-18 42CM Human Torso**

Miniature human torso

Dissectible into lungs,heart,stomach,liver,intestines and female organs.the head is detachable. on base. Size(cm):19x14x42



Size(cm):19x14x45

**EQH 3301-23 45cm Male Torso (14pcs)**



Dissectible into lungs, heart, stomach, liver, intestines, female organs and chest. The head is detachable. on base. Size(cm):19x14x45

**EQH 3301-24 45cm Tall, Female Torso(12 pcs)**

## EQH3301-21

Natural anatomy of autonomic nervous systematic dissection



Size(cm):78x35x10

## EQH3301-12

Miniature Human Torso



Tall 28cm. Can be dissectable into lungs, heart, stomach, liver and intestines. The head is detachable.. The superficial muscles are shown on right side. On base.  
Size(cm):12x13x29

## EQH3301-14

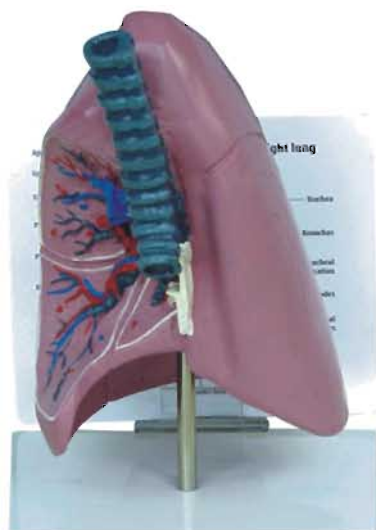
Transparent Human Female Torso



Tall 18cm. Made from plastic.  
Size(cm):12x13x18

## EQH3321-2

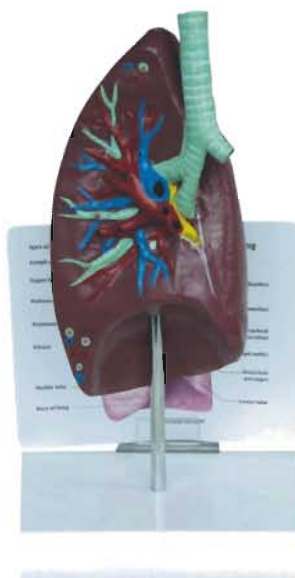
Mix-type anat-trachea/lung model w/description plate



Mix-type .Accentuate your lessons on the human respiratory system and respiratory-related health issues with this finely detailed,full size model showing the bronchus,arteries,veins,two lymph nodes,bronchial passages and trachea bifurcation.With description plate. Size(cm): 18x14x26

## EQH3321-3

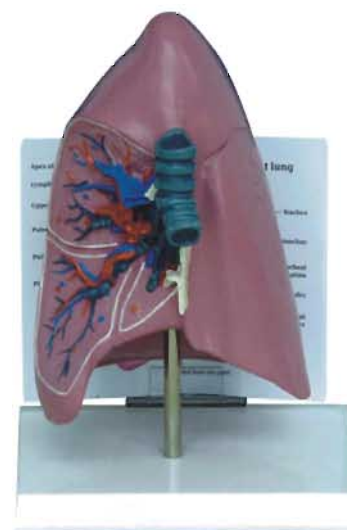
Chinese desk type,anat-trachea/lung model w/description plate



Chinese desk type.Accentuate your lessons on the human respiratory system and respiratory-related health issues with this finely detailed,full size model showing the bronchus,arteries,veins,two lymph nodes,bronchial passages and trachea bifurcation.With description plate. Size(cm): 18x14x26

## EQH3321-4

West desk type,anat-trachea/lung model w/description plate

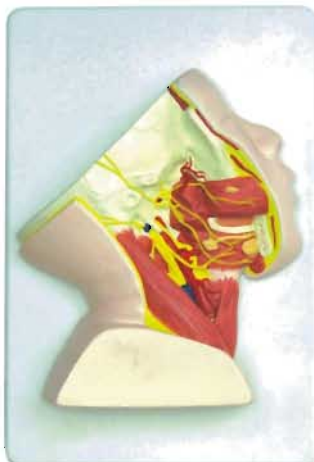


West desk type.Accentuate your lessons on the human respiratory system and respiratory-related health issues with this finely detailed,full size model showing the bronchus,arteries,veins,two lymph nodes,bronchial passages and trachea bifurcation.With description plate. Size(cm): 18x14x26



## EQH3392-7

The deep model of human face



Size(cm):34x23x8

## EQH3392-8

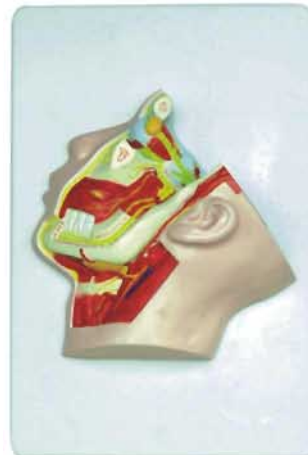
The trigeminal nerve model of human face



Size(cm):34x23x8

## EQH3392-9

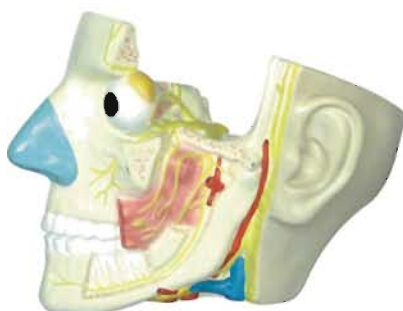
The sponge sinus model of human face



Size(cm):34x23x8

## EQH3392-5

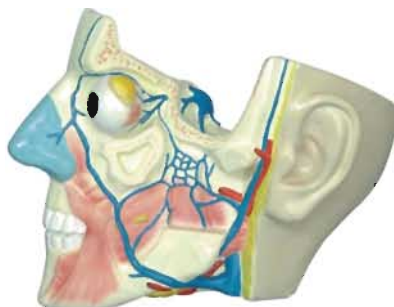
Human Head Model



To show the inner structure of the human head.  
Size(cm):19x18x6

## EQH3392-6

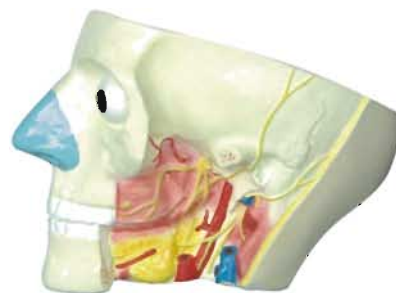
Media section of the head



This model shows all relevant structures in great details  
Size(cm):19x18x6

## EQH3392-13

Sub mandibular triangle model



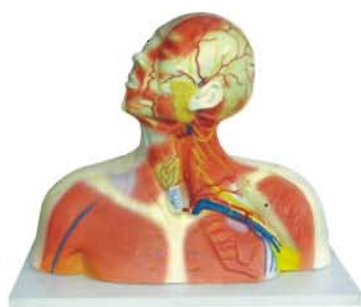
Size(cm):19x18x6



## EQH4261 Neuron model

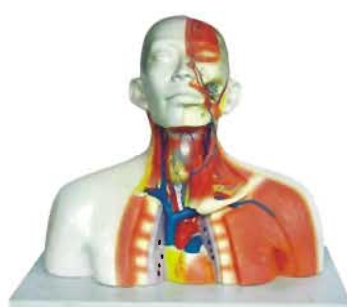
Enlarged 2500X, this model shows the structures that combine to form the functional neuron. The durable, molded plastic model is designed in two sections: the perikaryon cut open to expose the nucleus of the cell, neurite cone, dendrites and flexible synaptic terminals; and the peripheral nerve with sheaths, including the Schwann cell with nucleus, the Schwann sheath, the neuraxon and mitochondria. In all there are 14 keyed structures.  
Size(cm):36x23x10





## EQH 3395 Human head

This model shows all relevant structures of the human head in great detail. On baseboard  
Size(cm):50x30x42



## EQH 3395-1

**The model of veins of the head neck and thoracic**

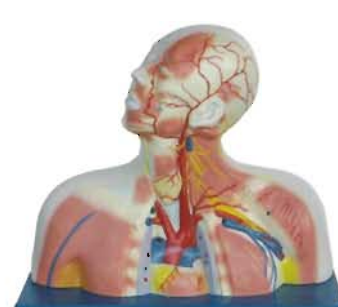
Size(cm):50x30x42



## EQH 3395-2

**Model of cranial cavity head neck and thorax**

Size(cm):38x30x42



## EQH 3395-3

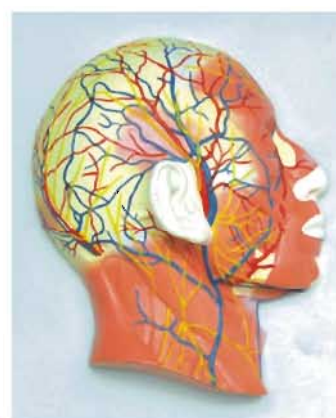
**The model medial muscles blood vessels and nerves of the head and neck**

Size(cm):50x30x42



## EQH3395-4 Human head

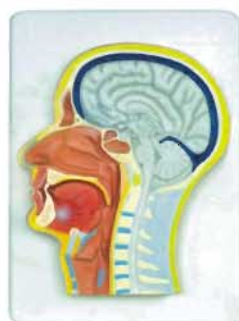
This model shows all relevant structures of the human head in great detail. On baseboard.  
Size(cm):17x12x23



## EQH3395-9

**Half head with musculature blood vessels nerves**

This life size model shows the right half of head and neck and their section along the sagittal plane. A superficial dissection exposes the mimic muscle system, the superficial blood vessels and nerve branches of face and scalp, the parotid gland in situ, the submandibular gland. The median section shows the brain with its inner structure, the upper respiratory tract and the oropharyngeal cavity, the section of the cervical vertebrae.  
Size(cm):34x23x10



## EQH 3395-8

**Median section of the head**

Representation of the superficial and the internal structures of head and neck. This model shows all relevant structures of the human head in great detail.  
Size(cm):34x23x6



## EQH 3395-5

**The model sublimis of muscles blood vessels and nerves of the head and neck.**

Size(cm):40x28x10



## EQH 3395-7

**The model deep muscles blood vessels and nerves of the head and neck.**

Size(cm):40x28x10



## EQH 3395-6

**The model deep muscles blood vessels and nerves of the head and neck.**

Size(cm):40x28x10



## EQH337 Dentition Development

Four life size models dramatically recreate the upper and lower jaw of a newborn child, a 5-year-old, a 9-year-old, and an adult. Root structures of temporary and primary teeth are clearly shown. The models are permanently mounted on a stand for display purposes.



## EQH337-1 Dentition Developm

Four life size models dramatically recreate the upper and lower jaw of a newborn child, a 5-year-old, a 10-year-old, and an adult. Root structures of temporary and primary teeth are clearly shown. The models are permanently mounted on a stand for display purposes. Size(cm): 33x10x20



## EQH3352 Tooth Hygiene Set

Emphasize the importance of good dental hygiene with this giant dental care model and giant toothbrush. Shows the upper and lower half of an adult's dentition. Instruction manual explains tooth structure; dental decay; and how to floss properly. Size(cm): 17x17x22



## EQH3352-3 Tooth Hygiene Set

A model useful to make easy the teaching of the correct way of brushing teeth. With teeth brush. Size(cm): 17x17x22



## EQH3352-2 Small Tooth Hygiene

Size(cm): 12.5x12.5x12.5



## EQH3352-4

Human tooth model



## EQH3352-5

Human tooth model



## EQH3352-6

Human tooth model



## EQH3352-7

Human tooth model



## EQH3352-8

Human tooth model



## EQH3353-4 Teeth model w/description plate

This two-sided teeth pathologies model by GPI Anatomicals shows tooth, gum and jaw structure and common pathologies including cavity decay, cracked tooth with cavity, periodontitis, plaque/tartar and more. Excellent visual support for any dental hygiene curriculum. The model is made of hard plastic and sits securely on two metal pegs attached to the large display platform. The platform has rubber feet to prevent slipping. Includes model, display stand, keycard. Size: 16.5x12x18.5



## EQH3326 Half Lower Jaw

The model represents half of the left lower jaw of a young person. One section of bone is removable to expose the tooth roots, spongiosa, vessels and nerves. Canine and first molar are removable, and longitudinally sectioned. On stand. Size(cm): 33x19x18



## EQH3353-1 Human Tooth Set

About 8 times of life size. Includes lower incisor tooth (2 parts), lower canine tooth (2 parts), lower premolar tooth (1 parts), lower molar tooth with caries (2 parts), upper molar tooth (3 parts). Each tooth on stand.



## EQH3353-2 Human Teeth

This model illustrated the structure of the molar teeth, also show the capillary vessel and nerve. Size(cm): 16x20x32



## EQH3353-3 Human Teeth

Shows the inner structures of incisor tooth, canine tooth and molar tooth. Size(cm): 30x14x12

These models are designed as aim to the study of anatomy and physiology in middle schools and medical institutes. They help the students to get a correct understanding of the external features of the brain as a whole, as well as of the relations between their component portions.





## EQH3307-1 Human Brain With Arteries

This model facilitates the medical students to get a correct understanding of the external features of the brain and its arterial supply as a whole, as well as the relations between their component portions. External features of the brain: cerebral hemisphere, brain stem, cerebellum. The arterial supply of the brain: sources, vertebral, internal carotid arteries, arterial supply of the cerebellum and cerebrum. Made of PVC and can be separated into 7 parts, on base. Size(cm): 17x17x13



## EQH3315 Human Brain Stem

About 3 times of life size. The base segment of the 12 pair of brain nerve are shown in yellow. Size(cm): 27x20x14



## EQH3307 Human Brain

Life size. Dissectable into 3 parts. Size(cm): 17x17x13



## EQH3307-2 Human Brain

The brain model by colored separation (detach painted) showing function with base 3 parts.



## EQH3307-7 Mini Human Brain Model





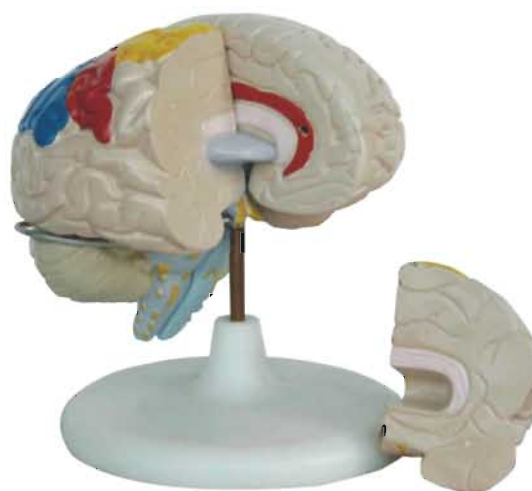
## EQH3307-3 Human Neuro-Anatomical Brain

Life size.8-part,This deluxe brain is medially divided. On the right half, you will find a colored , systematic grouping and representation of the cerebral lobe. The left half shows : pre-and post-central region , Broca and Wernicke areas , Heschl's gyrus, Brain nerves,ventricles. Both halves can be disassembled into : Frontal with parietal lobes , Temporal with occipital lobes12 Half of brain stem , Half of cerebellum Size(cm): 20x15x15



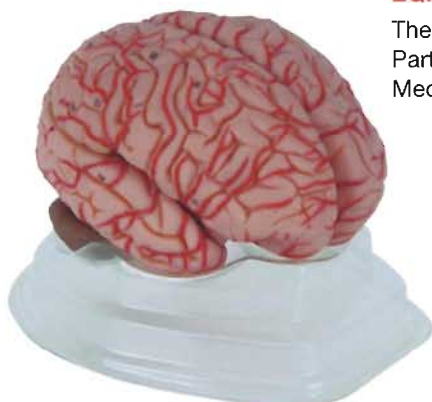
## EQH3307-4 Human Brain

Life size. Dissectable into 8 parts. With a median section, the brain is divided into right and left half. Each half consists 4 pieces: frontal parietal lobe, temporal occipital lobe, half brain stem, half cerebellum. On detachable stand with base. Size(cm): 14x14x17.5



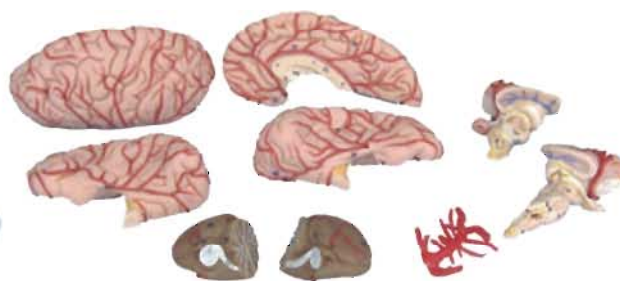
## EQH3307-5 Human Brain

This 2 times life-size brain is medially divided and dissectable into 5 parts.The frontal lobes and brain stem are removable .The model enables you to see the motor, sensor and functional centers which are shown in different colors.



## EQH3307-6 Brain With Arteries

The model shows arterial network of vessels. Separates into 9 Parts:frontal and parietal lobes.Temporal and occipital lobes. Medulla. Cerebellum.Basilar artery Size(cm): 15x16x17





## EQH3309 Human Eye

Enlarged. About 6 times of life size. Comes with a horizon section of the eyeball wall. Sclerotic membrane, choroids membrane, lens and vitreous humor are removable. The blood supply and the origins of the muscles control the eyeball movement are also shown. On stand with base. 6 parts. Size(cm): 17x17x17

## EQH3309-1 Human Eye

Median enlarged. Shows the same features as EQH3309, except the blood vessels are not simulated. On stand with base. Size(cm): 12x12x21



## EQH3309-2 Human Eye

Slightly enlarged. Smaller than EQH3309 and EQH3309-1. Shows the same features as EQH3309, except the blood vessels are not simulated. On stand with base. Size(cm): 12x12x21



## EQH 3309-3 Eye in orbit, 8-part



This eight-part model is a popular choice for classroom study. The replica features a removable iris, cornea, lens, vitreous body, superior and lateral rectus muscles, with a cross-sectional diagram of retinal layers. In addition, students can examine the relationship between the eyeball and surrounding bones, nerves and blood vessels. Size(cm): 19x20x28

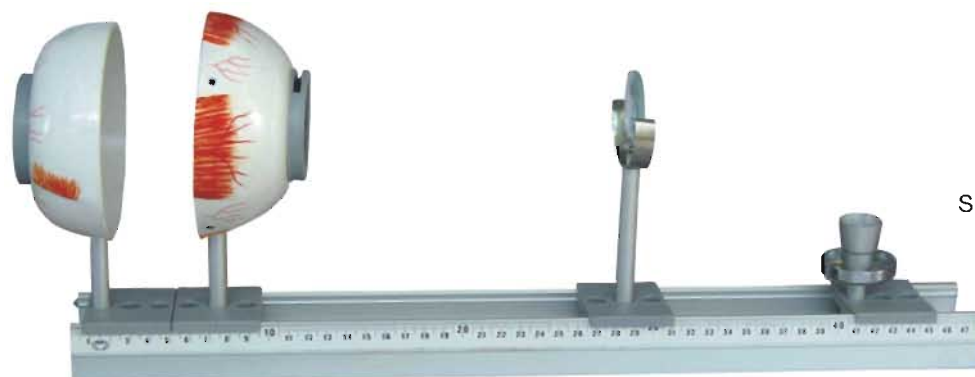
## EQH 3309-5 Eye in orbit



Size(cm): 25x20x12

This model is a popular choice for classroom study. The replica features a removable iris, cornea, lens, vitreous body, superior and lateral rectus muscles, with a cross-sectional diagram of retinal layers. In addition, students can examine the relationship between the eyeball and surrounding bones, nerves and blood vessels.

## EQH 3303-1 Human Functional Eye



Size(cm): 50x12x20

An excellent type to study the functions of the human eye. The eyeball has a horizon cut, the upper half of eyeball wall and the inner structures can be removable. With the flexible lens, the model can focus an image on the retina, demonstrates far and short sight, and their corrections. 1. Need battery 2. Needs power supply.



## EQH 3303 Human Functional Eye

An excellent type to study the functions of the human eye. The eyeball has a horizon cut, the upper half of eyeball wall and the inner structures can be removable. With the flexible lens, the model can focus an image on the retina, demonstrates far and short sight, and their corrections. 1. Need battery 2. Needs power supply. Size(cm): 17x17x22



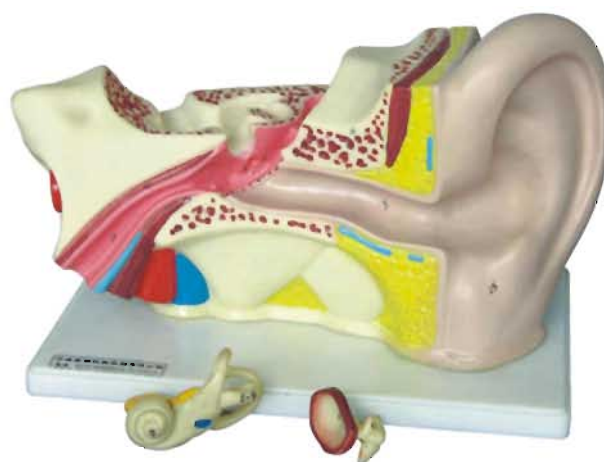
## EQH 3310 Human Ear



About 3 times life size model separates into the labyrinth with stapes, tympanic membrane with malleus and incus. The vinyl plastic teaching aid is mounted on a base.

Size(cm): 28x18 x18

## EQH 3310-1 Human Ear



About 3 times life size model separates into the labyrinth with stapes, tympanic membrane with malleus and incus. The vinyl plastic teaching aid is mounted on a base.

Size(cm): 28x10x10

## EQH 3310-4 Human Ear



About 2 times life size representation of the outer, middle and inner ear features a removable eardrum with hammer and anvil; a 2 part labyrinth with stirrup, cochlea and auditory/balance nerve; and two removable bone sections to close the middle and inner ear.

Size(cm): 15x13 x12

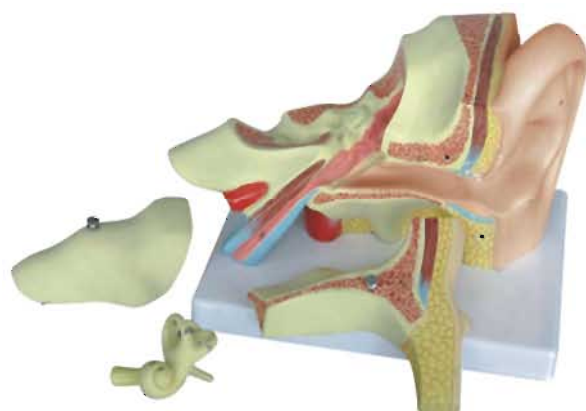
## EQH 3310-2 Human Ear



About 3 times life size representation of the outer, middle and inner ear features a removable eardrum with hammer and anvil; a 2 part labyrinth with stirrup, cochlea and auditory/balance nerve; and two removable bone sections to close the middle and inner ear.

Size(cm): 33x20x22

## EQH 3310-5 Human Ear

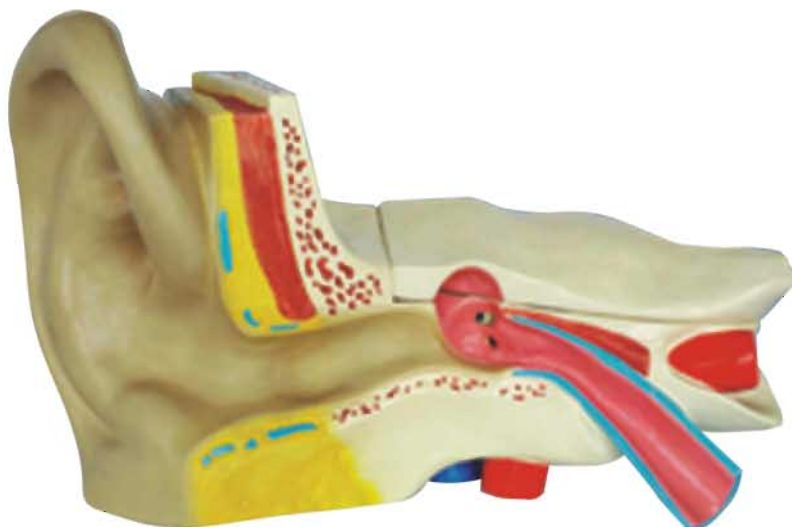


About 3 times life size model separates into the labyrinth with stapes, tympanic membrane with malleus and incus. The vinyl plastic teaching aid is mounted on a base.

Size(cm): 28x18 x18

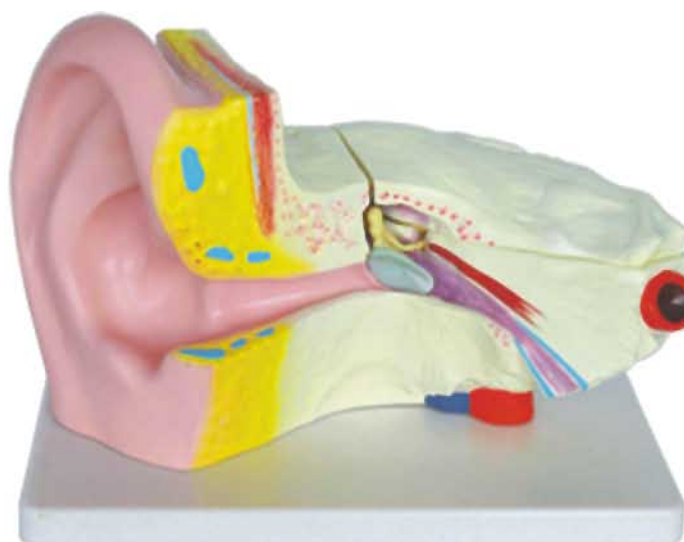
## EQH3301-67 Human Ear

Enlarged 6 times of life size. The model are designed as aids for the teaching of hygiene and physiology in middle schools .They help students understand the 3 main structural parts of the auditory organs (external ear,middle ear, internal ear) and the position of the equilibrium organ of human body.



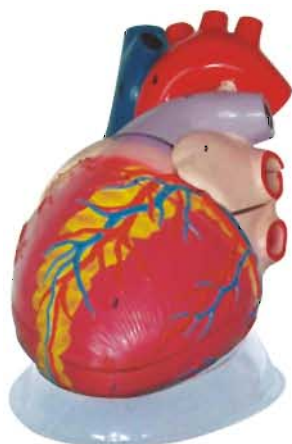
## EQH3310-3 Human Ear

About 5 times life size representation of the outer,middle and inner ear features a removabel eardrum with hammer and anvil;a 2 part labyrinth with stirrup,cochlea and auditory/balance nerve;and two removabel bone sections to close the middle and inner ear. Size(cm): 44x14x20



## EQH3313 Human Inner Ear

Dissectable into 2 parts. Shows the detail of the semicircular canals and the cochlea. On stand with base Size(cm): 25x20x31



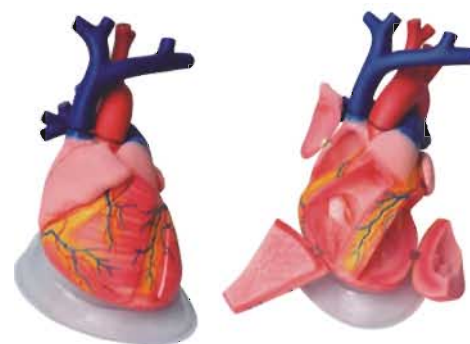
## EQH3304 Human Heart

About 5 times of life size. Dissectable into 3 parts. The important external and internal structures are clearly shown. On stand with base. Size(cm): 25x22x18



## EQH 3304-1 Human Heart

About 5 times of life size. Dissectable into 3 parts. Size(cm): 25x22x18



## EQH 3304-11 Human Heart

About 3 times of life size. Size(cm): 25x22x28



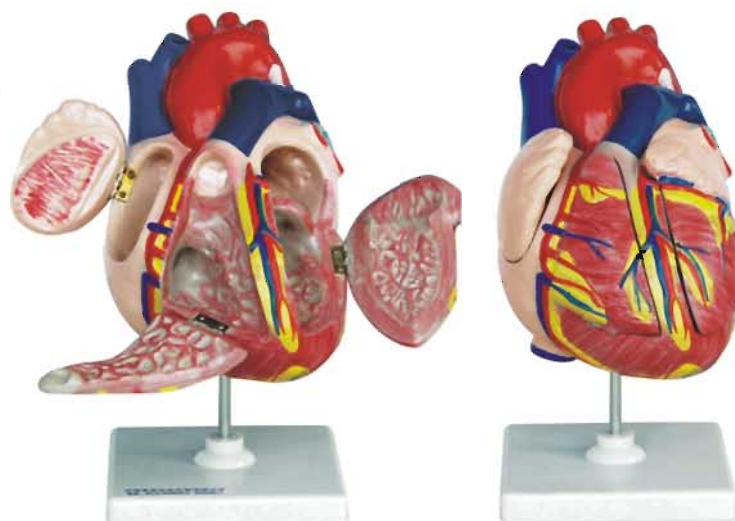
## EQH 3304-3



## EQH 3304-6

### Human Heart

About 2 times of life size. Giant heart with Bypass, 2 times life-size. Additionally to all features of this model depicts renal bypass to the ramus posterolateralis of the right coronary artery, to the ramus interoentricularis anterior of the left coronary artery with branching to the ramus diagonalis as well as a bypass to the ramus circumflexus of the left coronary artery. Additionally to the front heart wall also the right auricular appendix and the roof of the left-hand atrium are removable. size(cm): 13x22x24



## EQH 3304-4 Human Heart

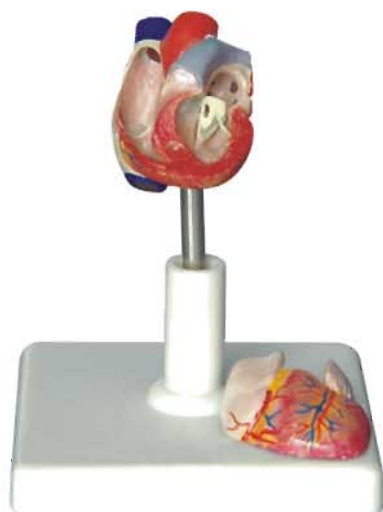
About 3times of life size  
Dissected into 4parts



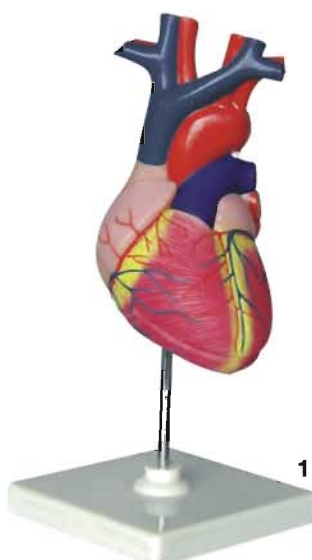
## EQH 3304-2 Human Heart

About 3 times of life size. A jumbo type, excellent for lecture or exhibition. Dissectable into 5 parts. Size(cm): 25x22x28

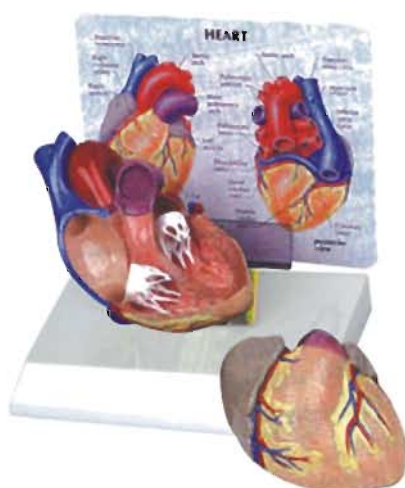




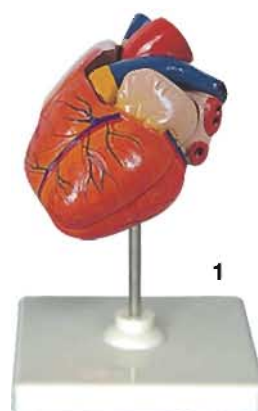
**EQH 3304-10 Human Heart**  
1/3 of life size. Dissectable into 2 parts.



**EQH 3304-5 Human Heart**  
Life size. Dissectable into 2 parts.  
Size(cm): 15x15x17



**EQH 3304-8 Heart Model**  
Life-size heart model is hand painted in full color,anatomically correct,and priced well below any heart models of this quality. The heart is dissected into two parts so all internal and external structures functions can be demonstrated and discussed.A durable full-color teaching card identifying all of the internal and external major anatomical structures of the heart is included and makes an outstanding teaching aid. Size(cm): 8x8x14



**EQH 3304-7 Human Heart**  
Life size. Dissectable into 2 parts. On base. These models are suitable for teaching human anatomy and physiology in middle schools and medical schools.They help the students to understand the external features and internal structures of the heart,and their relations with the large blood vessels .Thus a clearer conception of the routes of the systemic and pulmonary circulation can be obtained. Size(cm): 15x15x17



**EQH 3304-9 Heart Model**  
Life-size heart model is hand painted in full color,anatomically correct,and priced well below any heart models of this quality. The heart is dissected into four parts so all internal and external structures functions can be demonstrated and discussed.A durable full-color teaching card identifying all of the internal and external major anatomical structures of the heart is included and makes an outstanding teaching aid. Size(cm): 12x12x18



## EQH 3351 Human Nasal Cavity

This model helps the students to understand the external and internal structures of the nasal cavity. 1. External nose: shows the section of the nasal bones and cartilages. 2. Nasal cavity: on the lateral nasal wall show the superior, middle and inferior nasal conchae project medially into the nasal cavity forming the superior, middle and inferior nasal meatuses. 3. Paranasal sinuses: shows the frontal, sphenoid and maxillary sinuses. Life size. On stand with base. Size(cm): 17x17x17



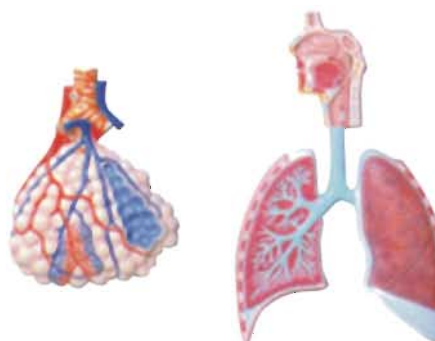
## EQH 3322 Human Thoracic Organs

Shows the thoracic organs include two-part larynx, two-part of heart, trachea and bronchial tree, subclavian artery and vein, vena cava, aorta, pulmonary artery, esophagus, and diaphragm. Two front half lungs are removable. On base. Size(cm): 34x23x18



## EQH 3322-1 Lung demonstration model

Students can demonstrate how the lungs work with this transparent lung model. Constructed of two rubber balloons, rubber stopper and bell jar. Pull the thin rubber diaphragm at the bottom of the jar down to see the lungs inhaling. Push it in and the balloons will collapse (exhaling). Size(cm): 17x17x20



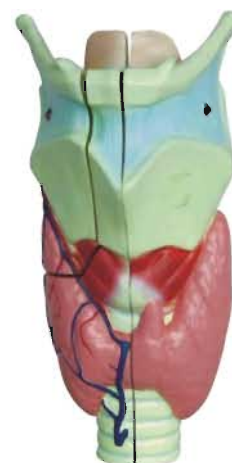
## EQH 3322-2 Human respiratory system with enlarged model

Showing the whole respiratory canal: from mouth and nasal cavity, larynx, trachea and the bronchial tree inside the lung. An alveoli about 150 times enlarged is provided. Its enlarged microscope structure help illustrate the interchange of CO<sub>2</sub> and O<sub>2</sub>. Size(cm): 53x38x5

A functional model that demonstrates movements of the epiglottis and cartilages in the voice box. It helps the students to require an understanding of the morphology and structure of the respiratory tract and phonetic organ. On stand with base.



**EQH 3305-1 Human Larynx**  
Size(cm): 11x11x25



**EQH 3305-3 Human Larynx**  
Size(cm): 15x15x31



**EQH 3306**  
**Human Pulmonary Alveoli**

Greatly enlarged. Shows the small branches of the principal bronchus and the structure of alveolar sac and alveolar duct. On base. Size(cm): 24x34x44

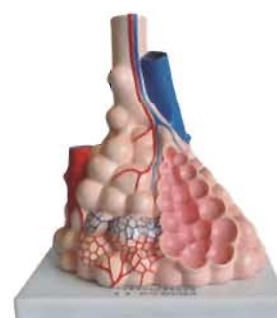


**EQH 3306-3**  
**Human Pulmonary Alveoli**  
Size(cm): 28x25x44

The model shows the small branches of principal bronchus: 1. Section of bronchiole of no cartilage. 2. The relation between pulmonary alveoli and terminal bronchiole. 3. The structure of alveolar sac and alveolar duct. 4. The capillary rete in the alveolar septa. Made of PVC plastic and mounted on plastic base.



**EQH 3306-2**  
**Human Pulmonary Alveoli**  
Size(cm): 13x9x12



**EQH 3306-1**  
**Human Pulmonary Alveoli**  
Size(cm): 21x15x23



**EQH 3321-1**  
**Human Trachea Bronchi And Lungs**

This natural size model is particularly useful to understand the segmental anatomy of the left and right lungs. The various segments are painted with different colors to show their locations. Mounted on base with stand



**EQH 3321 Human Lungs**  
Slightly enlarged. Provides the shape of lung and shows the bronchial tree. On stand with base. Size(cm): 28x18x32



**EQH 3321-2**  
**The Trachea, Bronchi and Broncho-Pulmonary Segments**

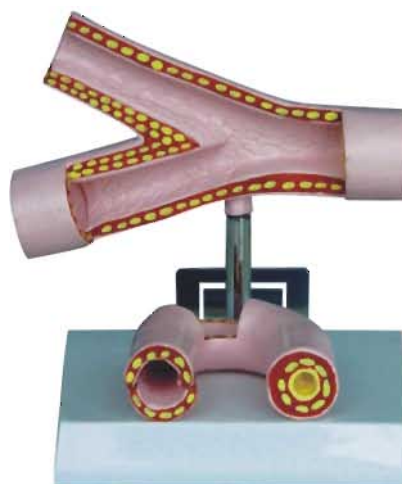
The lack of any musculature or other tissue on this life-size model helps students to better understand the relationship between organs. Size(cm): 12x12x24





## EQH 3318-2 Human Lymph Node

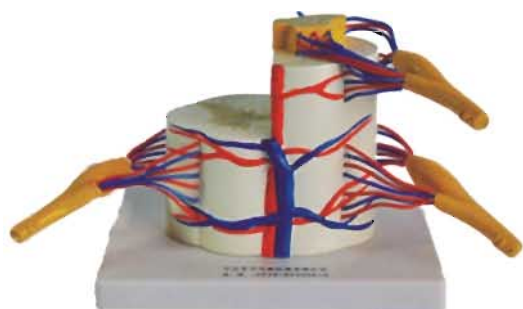
Ideal for medical studies as well as anatomy classes, the 100X artery model is sectioned to show the arterial wall and cellular structure, as well as the partial occlusion of one branch by cholesterol. The model is mounted on a base. Size(cm): 18x14x21



## EQH 3318-5

Artery comparison model between health and disease arteries

Size(cm): 20x15x18



## EQH 3308-1

### Vertebral And Partial Spinal Cord

This model replicates a segment of the upper thoracic spinal cord at six-times life size. Anterior and posterior nerve roots are exposed and color-coded. Model is made of vinyl plastic for durability. Size(cm):30x15x15



## EQH 3308-2

### Vertebral And Partial Spinal Cord

Size(cm):36x23x8



## EQH 3308 Vertebral And Partial Spinal Cord

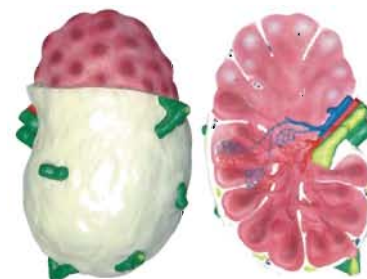
About 3 times of life size. Includes an entire lumbar vertebral which can be dissectible into two pieces. A segment of spinal cord, the spinal nerve exits and cauda equina are shown clearly. On base.

Size(cm): 30x20x19



## EQH 3318 Human Lymph Node

Size(cm):12x12x38



## EQH 3318-1 Human Lymph Node

Size(cm):12x12x38

The models served as visual aids for teaching the hygiene and physiology in middle schools. They help the students to understand the distribution of lymph.



## EQH 3323-1 Blood Circulation System

An exceptional representation of the vascular system, the model shows basic human skeletal structure as well, so students can understand how it relates to blood circulation. It also features the heart, lungs, liver, spleen, and kidneys. Size(cm): 80x30x6



## EQH 3330-1 Digestive System

This natural size model shows the complete digestive tract from the mouth cavity to the rectum. The mouth cavity, the pharynx and the first tract of the esophagus are dissected along the medial sagittal plane. The liver is shown together with the gall bladder and the pancreas is dissected to expose the inner structures. The stomach is open along the frontal plane, the duodenum, the cecum, part of the small intestine and the rectum are open to expose the inner structure. The transverse colon is removable. Size(cm): 80x30x6



## EQH 3333-4

### Hypertension model, 6-part

Life size. On stand with base.  
Size(cm): 40x12x12

This impressive model shows the harmful effects of hypertension on the most susceptible organs. It consists of scale down depictions of: brain/eye/2-parts heart/2-parts kidney.



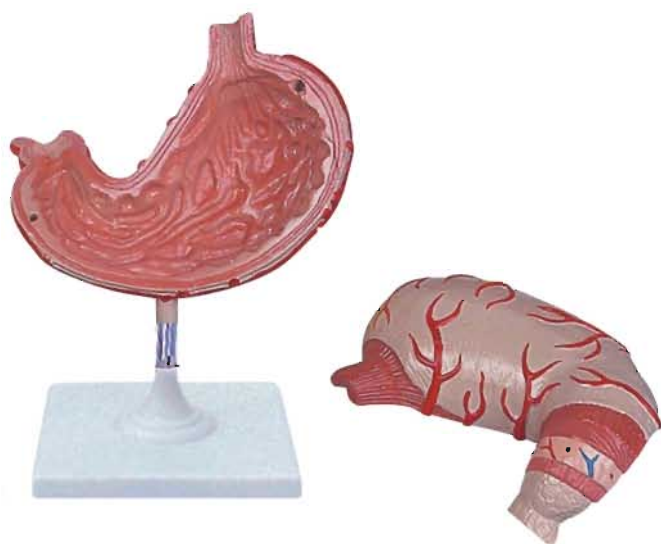
## EQH 3329 Human Stomach

About two times of life size. Dissectible into two parts. Shows the section features of the stomach wall, longitudinal and circular muscle layers, blood supply. Size(cm): 30x20x12



## EQH 3329-3 Human Stomach

About two times of life size. Dissectible into two parts. Shows the section features of the stomach wall, longitudinal and circular muscle layers, blood supply. Size(cm): 30x20x12



## EQH 3329-1 Human Stomach Model

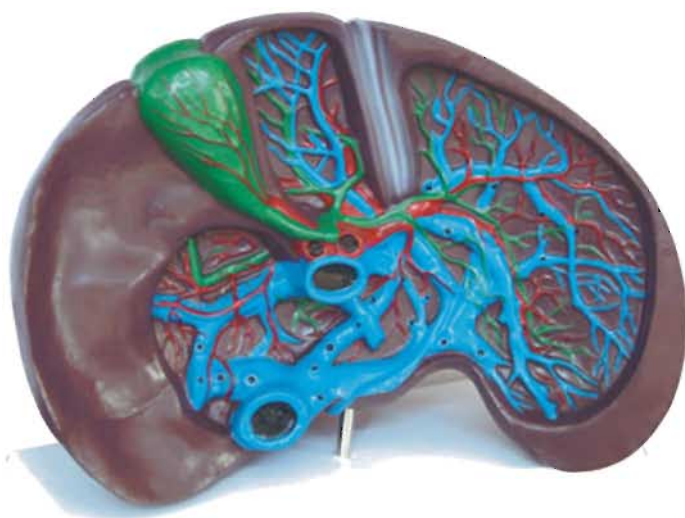
This model is dissected along the medial plane and can be open to show the internal structure of the stomach including the mucosa, the pylorus, the section of the gastric wall. Superficial dissections expose the different muscular layers, the nerves and the blood vessels. Life size. Size(cm): 12x12x18



## EQH 3329-4 Human Stomach Model

This model is dissected along the medial plane and can be open to show the internal structure of the stomach including the mucosa, the pylorus, the section of the gastric wall. Superficial dissections expose the different muscular layers, the nerves and the blood vessels. Life size. Size(cm): 12x12x18





## EQH 3316-2 Model of Human Liver

The model is a dissected liver and gallbladder shows the complex network of veins, arteries and bile ducts to illustrate how each organ functions, separately and in relation to each other. The falciform ligament is shown separating the right and left lobes of the liver, and the hepatic and systemic veins and arteries are depicted in different colors. The model is mounted on a stand. Size(cm): 35x15x28



## EQH 3316-4

### Model of spleen Pancreas And Duodenum

This natural size model reproduces the pancreas, the spleen and the duodenum. The pancreas is open to show the entire pancreatic duct. The duodenum is partially dissected to expose its inner structure.

Size(cm): 12x15x22



## EQH 3316

### Human Liver Pancreas And Duodenum

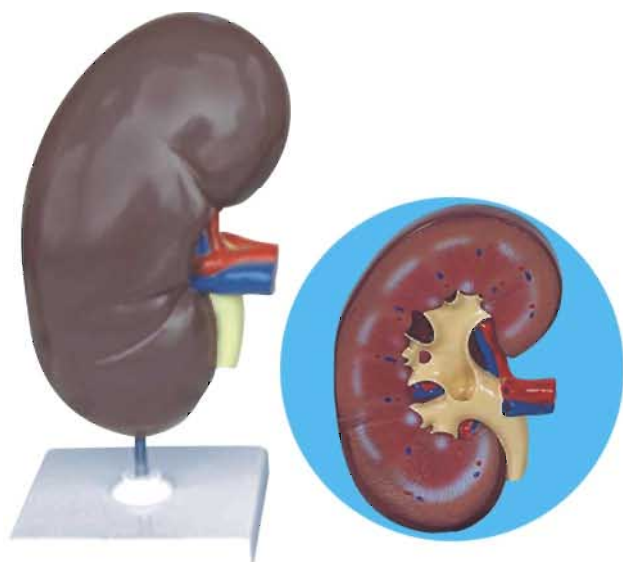
An economical way to study the basic structures of the liver, spleen, blood vessels and pancreas. External structures are illustrated as well as the pancreatic duct of the pancreas. This model also shows the abdominal aorta and inferior vena cava. Life size, made of PVC. Size(cm): 17x17x22



## EQH 3316-3 Disease Liver Model

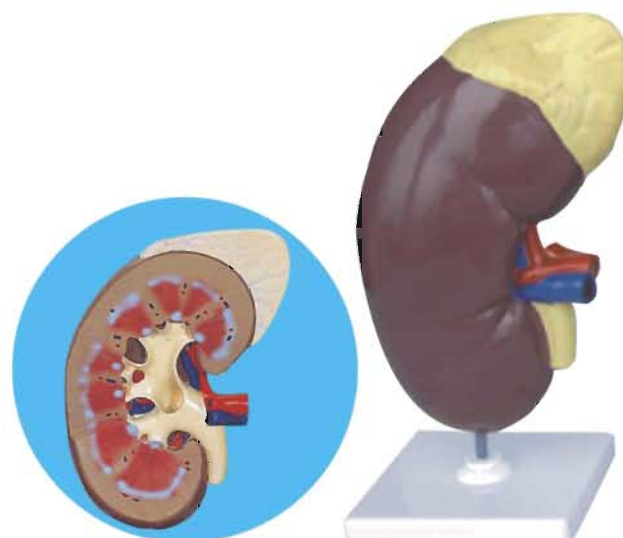
This model can be dissected into 4 parts, to show the structure of a diseased liver.

Size(cm): 12x12x17



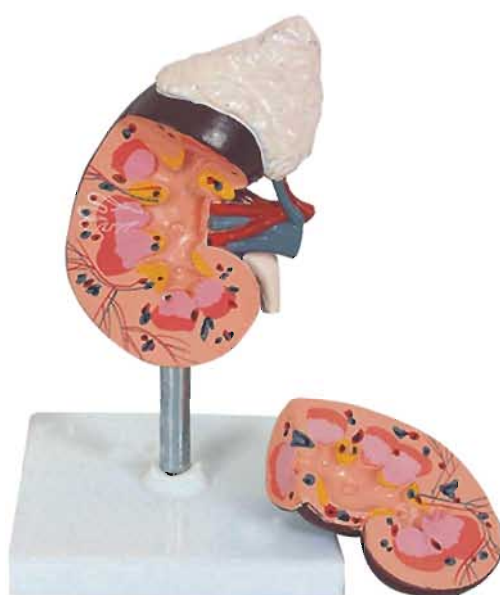
## EQH 3333 Human Kidney

The coronary section of the right kidney shows the renal hilus, renal blood vessels, ureter, renal pelvis of the kidney, the renal substance is demonstrated by its medulla and cortex, medullary pyramid, papillae etc. Mounted on a plastic stand. Size(cm): 15x15x30



## EQH 3333-1 Human Kidney With Adrenal Gland

This detailed life size model features the kidney, adrenal gland, renal and adrenal vessels and upper portion of the cortex ureter. reveal the cortex medulla, cortex vessels and renal pelvis. Model can be removed from the stand for instruction and patient education. Size(cm): 15x15x32

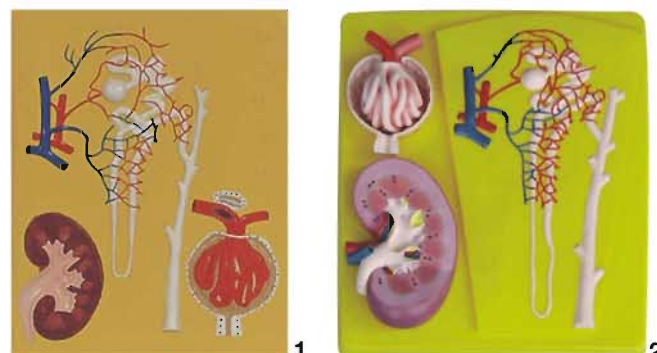


## EQH 3333-2 Human Kidney With Adrenal Gland

The detailed life-size model features the kidney, renal gland, renal and adrenal vessels and upper portion of the ureter. Dissectible into 2 parts to reveal the cortex medulla, cortex vessels and renal pelvis. Model can be removed from the stand for instruction and patient education. Size(cm): 12.4x12.4x6



## EQH 3317-1 Human Kidney, Nephron And Glomerulus



## EQH 3317 Human Kidney, Nephron And Glomerulus

A relief model. Consists a kidney with a frontal section, a nephron and its blood supply, and a opened glomerulus. Size(cm): 41x32x5



**EQH 3338**  
**Human Male Half Pelvis**

Life size. With a median section, both internal and external sexual organs are clearly shown. On base. Size(cm): 28x18x29



**EQH3339**  
**Human Female Half Pelvis**



**EQH 3339**  
**Human Female Half Pelvis**



**EQH 3339-1 Human Pregnant Uterus**  
Life size. Shows median section of the right half of female pelvis. A 9-month fetus is removable. A 3-month fetus is included for comparison. An excellent model for study of human embryo development. On base. Size(cm): 38x25x40



**A**



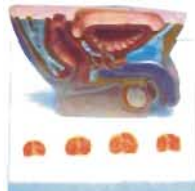
**B**



**F**



**C**



**D**



**E**

**EQH 3339-4**

- A: small human diseased male urinary/pelvis model, stand
- B: small human diseased male urinary/pelvis model, stand
- C: small human diseased male urinary/pelvis stand system
- D: human male health & disease composition model of genital organs bladder, prostate and urethra
- E: human male health & disease composition model of genital organs bladder, prostate and urethra
- F: female urinary/pelvis model, stand

The models are suitable as visual aids for teaching of inguinal area in the medical colleges and the special secondary schools.



**EQH 3396**  
**Model of Anat Perineum (male)**  
Size(cm): 35x28x7



**EQH 3397**  
**Model of Anat Perineum (female)**  
Size(cm): 41x30x14



**EQH 3339-2 Human Parturition**

The model basing on the mechanism of normal labor, shows the cardinal movements of engagement: descent-flexion-internal rotation of the head-extension-rotation-external rotation of the head-internal rotation of the shoulders at accouchement. Suitable for teaching the mechanism of normal labor in medical colleges and nursing schools.



These are intended for middle schools as visual aids in teaching physiology and hygiene to help students understand the external features of the urinary system and internal structure of the kidney and urinary bladder.



**EQH 3311**

### Human Male Urogenital System

This is intended for middle schools as a visual aid in teaching physiology and hygiene to help the students to understand the external features of the urogenital system and the internal structures of the kidney, urinary bladder, penis and testicle. Size(cm): 37x15x9



**EQH 3312**

### Human Female Urogenital System

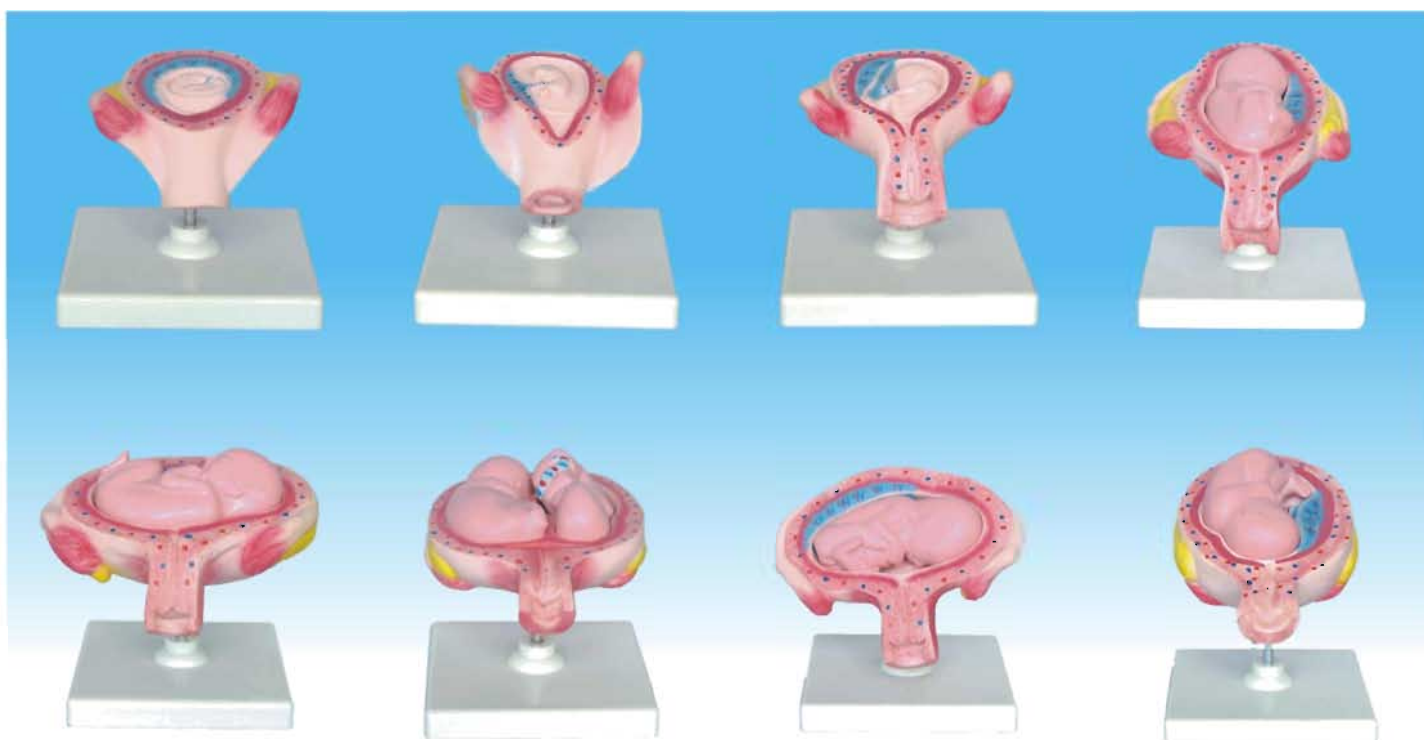
This model serves as a teaching model for teachers to teach the female urogenital system in schools and colleges. The model shows kidney, ureters, urinary bladder, uterus, accessories of uterus, vagina, ovary membrane, ligaments, uterus ligament and its artery etc. Size(cm): 35x21x13



**EQH 3311-1**

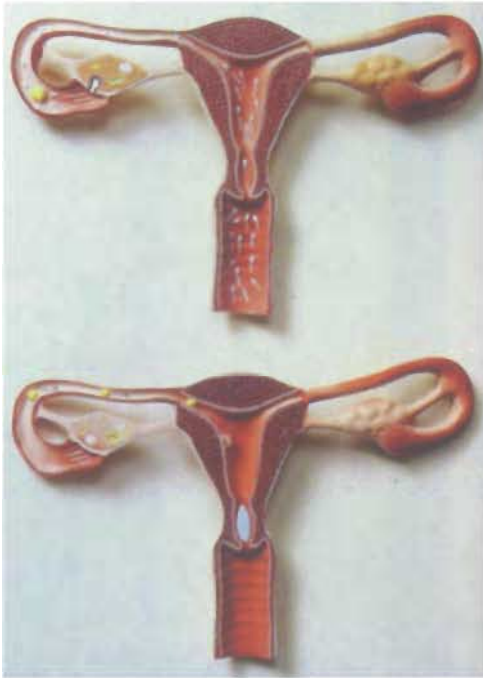
### Human Urinary System Model

Slightly larger than life size and depicted in brilliant color, this model of the full urinary system can easily be seen by every student in the class. The vena cava and abdominal aorta are shown; the right kidney is partially dissected to show the cortex, medulla, pyramids, calyces, pelvis and origin of the renal artery and vein, and tubing represents the ureters leading to the two-part bladder resting on the pubic symphysis. The bladder can be opened to reveal the mucosa, trigone, prostatic portion of the urethra, seminal vesicles, ejaculatory ducts, and vas deferens. The three piece model is mounted on a base. Size(cm): 35x21x13



**EQH 3339-3 Human Development Set**

Includes 8 uterus models to show the development of embryo and fetus. 1. 1st month embryo; 2. 2nd month embryo; 3. 3rd month embryo; 4. 4th month fetus (transverse position); 5. 5th month fetus (breech position); 6. 5th month fetus (transverse position); 7. 5th month twin fetus (normal position); 8. 7th month fetus (normal position). Embryo and fetus are removable. Each on stand. Size(cm): 12x12x15

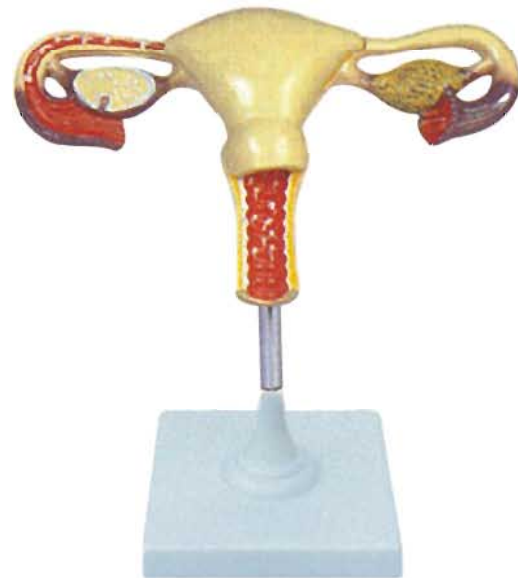


**EQH 3133 Model of Human Fygdtte, Clearag and Development Process**

The 2 frontal sections of the female reproductive organs depict the fertilization process. The first model shows the path of sperm through the uterus and fallopian tubes, and a sperm's union with an egg. The second model illustrates the zygote's implantation in the endometrium. The two models are mounted on a base. Size(cm):34x23x8

**EQH 3133-1 Natural Uterus w/luxury base**

Size(cm):12x12x15



**EQH 3133-4 Natural Uterus**

Size(cm): 26x16x9





## EQH 3314 Human Skin

Detail enlarged. Shows hair follicles, sweat glands, sense organs and other key features. Five layers are shown on the top of the model. On base.  
Size(cm): 35x15x30



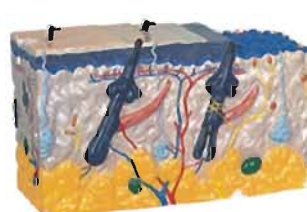
## EQH 3314-1 Human Skin

Detail enlarged. Shows hair follicles, sweat glands, sense organs and other key features.  
Size(cm): 28x18x34



## EQH 3314-7 Human Skin

The models are used as the teaching apparatus showing the magnified microscopical structure of the skin with appendages, blood vessels and nerves in the course of physiology and hygiene. Size(cm): 36x29x5



## EQH 3314-3

**Small Solid Health Skin**  
Size(cm): 14.5x6x11



## EQH 3314-4

**Small Solid Health Skin**  
Size(cm): 12.5x4.2x11



## EQH 3314-8

**Big Solid Health Skin, w/hair**

This unique model shows a section of human skin in three dimensional form. Individual skin layers are differentiated, and important structures such as hair, sebaceous and sweat glands, receptors, nerves and vessels are shown in great detail. Mounted on baseboard.  
Size(cm): 51x26x31





## EQH 3324

### Human Male Muscular

Tall: 85cm. Shows the superficial muscles. Upper arms are removable. On base. Size(cm): 20x17x89



## EQH 3324-4

### 85cm Tall Muscular Body Model

Tall: 85cm. Shows the superficial muscles. Upper arms are removable. On base. Size(cm): 20x17x89



## EQH 3342

### Human Male Acupuncture

Tall 85cm: Shows the acupuncture points on whole body. The points are labeled with number as well as Chinese characters. Model is painted in deep brown color. On base. Size(cm): 30x30x90



## EQH 3324-1

### Human Male Acupuncture

Tall: 85 The acupuncture points and their name are clearly shown on the left side. The right side shows the superficial muscles. Upper arms are removable. On base. Size(cm): 29x18x89



## EQH 3324-2

### Human Male Acupuncture

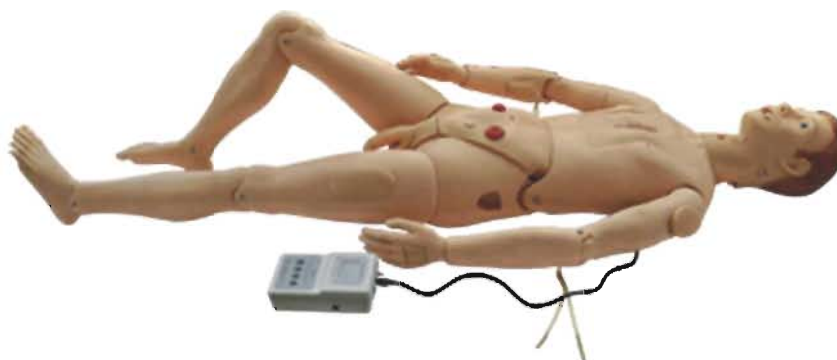
Tall:85cm.a model of human acupuncture and moxibustion, male run type with full cutis bronze - coloured . Size(cm): 30x30x90



## EQH 3324-5

### Mini Human Muscular

Fine detail lets you show students the complex topography of all major muscle systems. Usefull for lessons in kinesiology,human development and adolescent health,this model of a young male may be removed from the didplay stand for teaching purpose.in kinesiology,human development and adolescent health,this model of a young male may be removed from the didplay stand for teaching purpose. Size(cm): 12x12x22



## EQH3301-28 High Intelligent Comprehensive Nursing Manikin

This manikin is upgraded from GD/H125. Except all the functions of GD/125, it has many other functions, such as: CPR modules, pupil observation, liquid crystal simulation pupil, realistic states of normal, mydriasis, and myosis, automatically monitor tracheal intubation site through sensor, detect intubation site via auscultation. With all the basic nursing functions and CPR function, which include basic nursing, on-invasive blood pressure measurement, CPR, simulation of carotid artery pulse, and is the newest product in our country.

### Features:

1. All the functions of GD/H125
2. Extra functions:
  - (1) Pupil observation, Pupil LCD is CSTN pseudo-color, 65k color, RGB. Diameter range is 1-9mm. Pupil states: normal, mydriasis, and myosis, etc;
  - (2) Endotracheal intubation, automatically monitor whether the tracheal intubation is correct or not through sensor, support auscultation to detect intubation site
  - (3) CPR: electronic monitoring of airway open, volume, times and frequency of blowing, and compression site, times and depth;

## EQH 3301-26 Model of Resuscitated Human Body

### Function feature:

1. Simulation of adult natural of the airway.
2. Compression display device and warning device.
  - \* Correct compression position display, wrong compression position display, wrong compression position warning.
  - \* Correct compression intensity display, digital strip indicator light (yellow, green, red) shows compression depth, wrong compression intensity warning prompting.
3. Artificial respiration indicator light display unit, warning device:
  - \* Inhalation  $\leq 700\text{ml}$ , or inhalation  $\geq 1000\text{ml}$ , digital indicator light shows the quantity of inhalation volume, wrong operations warning prompting.
  - \* Inhalation volume over quickly and over much so as to enter into stomach, wrong digital indicator light display, and warning prompting.
4. Operation frequency: 100 times per minute (the latest international standard)
5. Examine pupils response: mydriasis and myosis
6. Examine carotid response
7. Working conditions:
  - \* 220V electrical source passes through manostat, output 6V power.
  - \* 4 pieces of No. 1 batteries, direct current.



## EQH 3301-27

### Demonstration Human Model for Nursing

Size(cm): 42x21x168

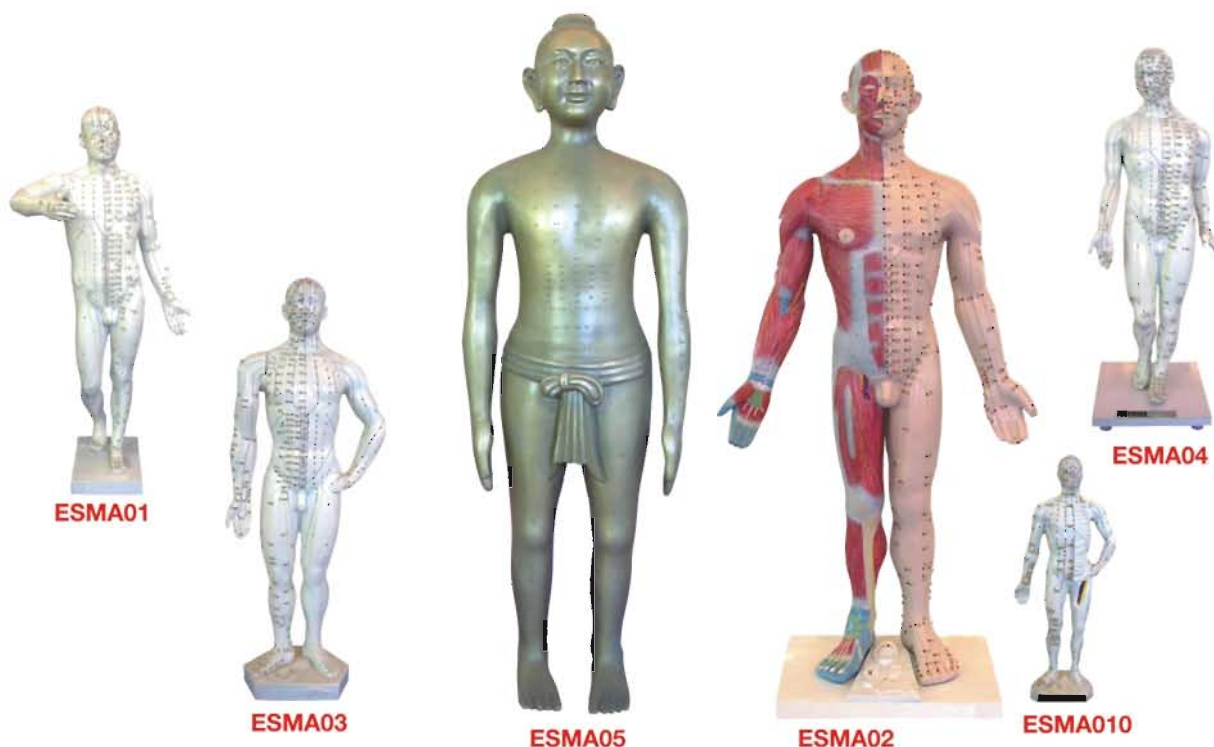
This is a full-body lifelike manikin, which is specifically designed for professional nursing training. The manufacturing quality of the manikin should provide many sessions of training when reasonable care and maintenance are practice.

### Nursing Skill

1. Head care: hair washing, face washing.
2. Irrigation of the eyes and ears.
3. Oral cavity care.
4. Oral cavity and nasal cavity intubation.
5. Oxygen inhalation.
6. Oral and nasal feeding.
7. Lavage.
8. Organs structure of thorax.
9. Venipuncture and injection, transfusion.
10. Deltoid injection.
11. Puncture of thorax, abdominal cavity, liver, medulla and lumbar.
12. Enema.
13. Urethral Catheterization for male and female.
14. Irrigation of bladder for male and female.
15. Ostomy irrigation.
16. Gluteus injection.
17. Organs structure of abdominal cavity.
18. General care, bed bathes, dressing and undressing.
19. Wound care: disinfection, dressing change, binding, hemostasia.



## ACUPUNCTURE PATHOLOGY MODEL



### ESMA01

The model of standart acupuncture  
Dimension: 280x260x605(mm)

### ESMA02

The model of acupuncture points  
with 14 channels  
Dimension: 450x150x850(mm)

### ESMA03

The model of 51cm Chinese  
acupuncture points  
Dimension: 210x105x540(mm)

### ESMA04

The model of 44cm Chinese  
acupuncture points  
Dimension: 175x120x440(mm)

### ESMA05

The model of archaize acupuncture  
copper man  
Dimension: 560x240x1660(mm)

### ESMA10

The model of 26cm chinese  
acupuncture points  
Dimension: 110x55x270(mm)



### ESMA08

The model of acupuncture points  
on hand  
Dimension: 100x30x130(mm)

### ESMA11

The model of acupuncture points  
on ear (natural size)  
Dimension: 40x20x65(mm)

### ESMA15

The model of acupuncture points on foot  
Dimension: 145x85x75(mm)

### ESMA06

The model of acupuncture points on ear  
Dimension: 250x220x210(mm)

### ESMA07

The model of acupuncture points on hand  
Dimension: 120x35x135(mm)

### ESMA12

The model of acupuncture points  
on ear (natural size)  
Dimension: 40x20x75(mm)

### ESMA13

The model of acupuncture points  
on ear (natural size)  
Dimension: 45x25x70(mm)

### ESMA14

The model of acupuncture points on head  
Dimension: 105x105x200(mm)



## ACUPUNCTURE PATHOLOGY MODEL



**ESMA16**

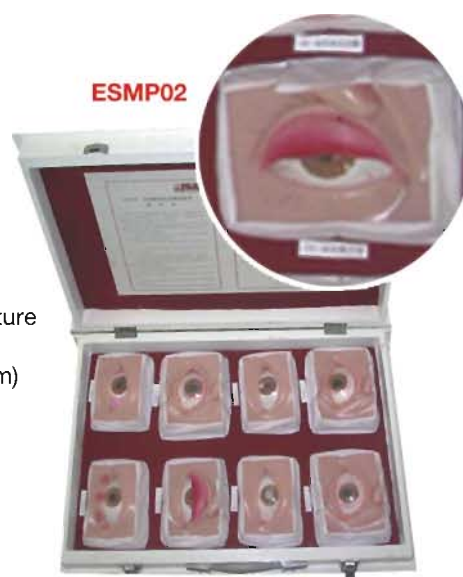


**ESMA16**

The model of standard acupuncture  
(natural size)  
Dimension: Natural size 1760(mm)



**ESMA16**



**ESMP02**



**ESMP02**

The model of common  
ophthalmopathy  
Dimension: 575x90x390(mm)



**ESMP06**

**ESMP06**

The model of coated tongue  
Dimension: 415x65x290(mm)



**ESMP19**

**ESMP19**

The model of standard acupuncture  
Dimension: hiegh2500(mm)

# ACUPUNCTURE PATHOLOGY MODEL

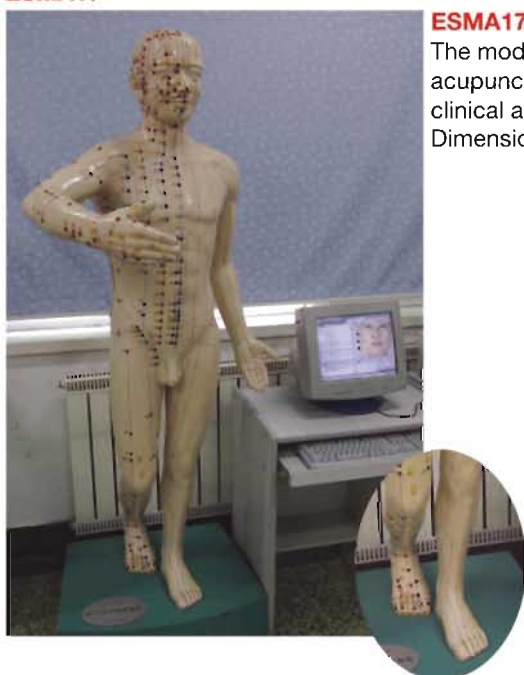
ESMA18



ESMA18

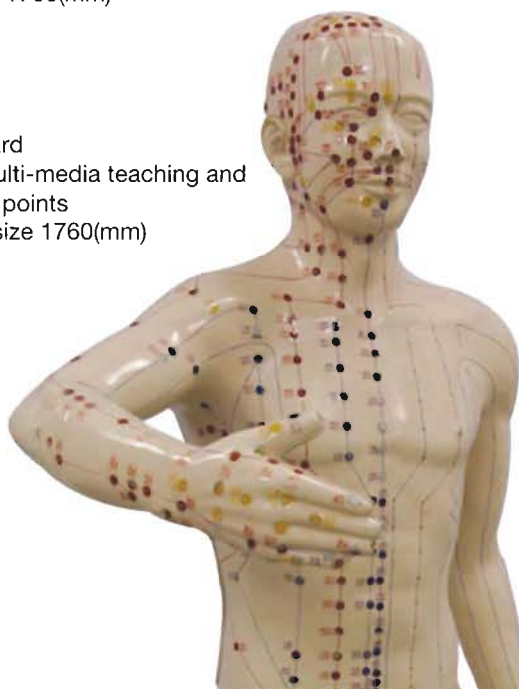
The model of standard acupuncture with simulate exam system  
Dimension: Natural size 1760(mm)

ESMA17

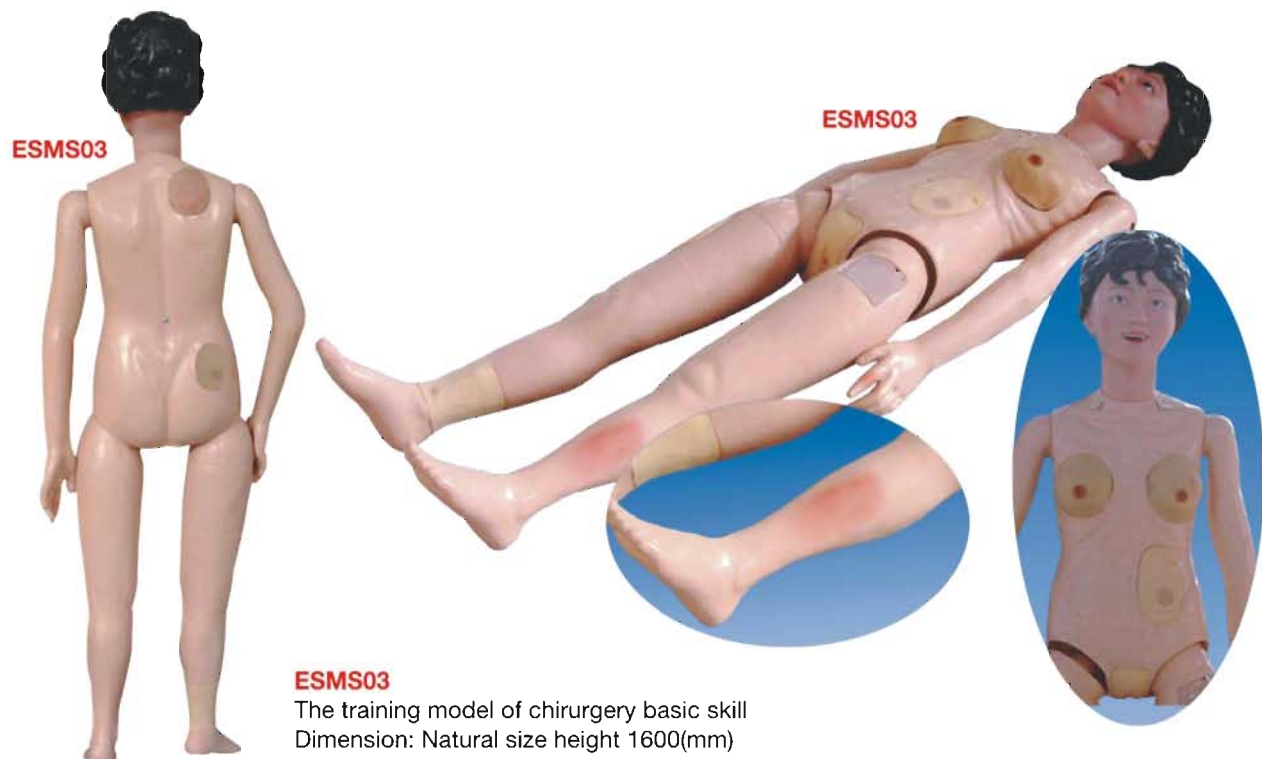
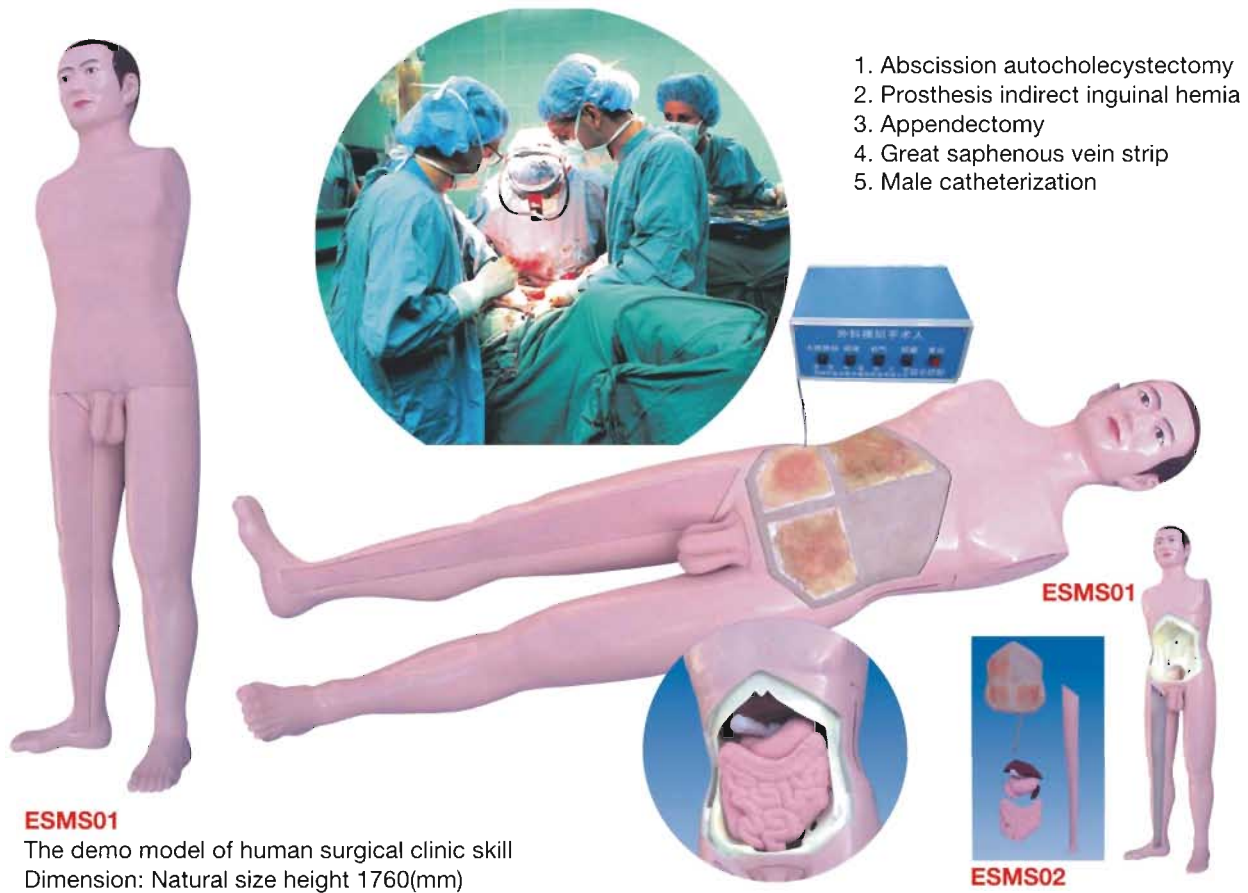


ESMA17

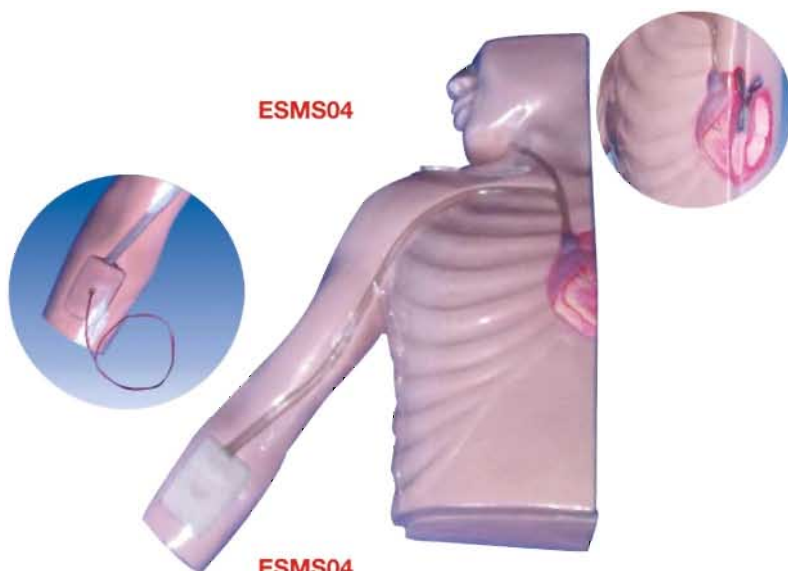
The model of standard acupuncture with multi-media teaching and clinical acupuncture points  
Dimension: Natural size 1760(mm)







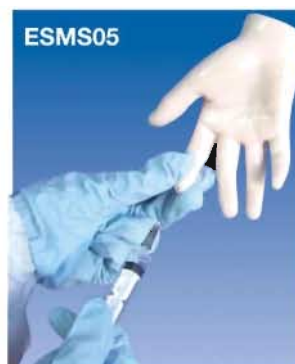




**ESMS04**

**ESMS04**

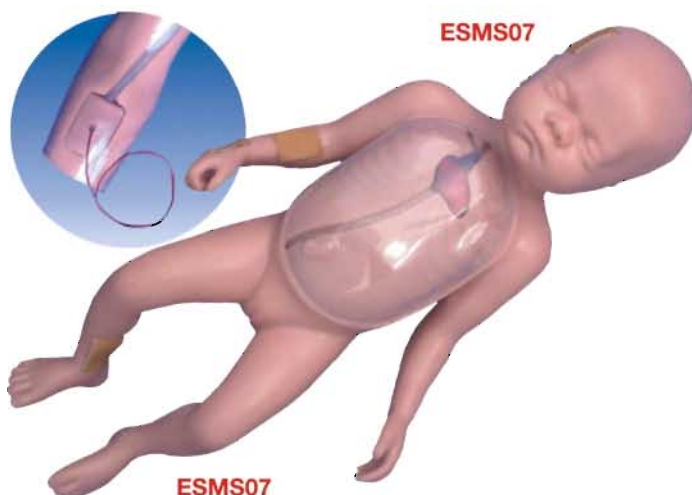
The model of primer insert artery (half torso)  
Dimension: Natural size



**ESMS05**

**ESMS05**

The training model of blood test needling  
Dimension: Natural size



**ESMS07**

**ESMS07**

The model of primer insert artery (baby)  
Dimension: Natural size



**ESMS06**

**ESMS06**

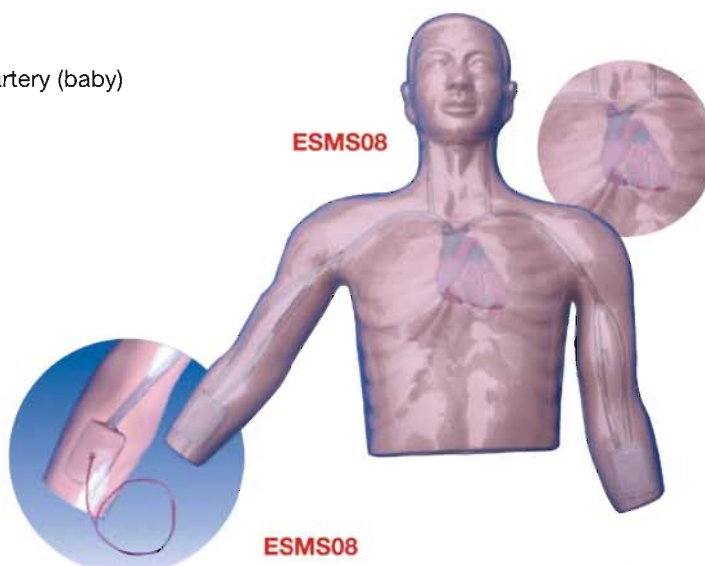
The training model of hemodiagnosis needling  
Dimension: Natural size



**ESMS09**

**ESMS09**

The model of aer with magnet (half torso)  
Dimension: Natural size



**ESMS08**

**ESMS08**

The model of primer insert artery (half torso)  
Dimension: Natural size



**ESMR01**

**ESMR01**

The dissection model of human head and cervix horizontal layer (17 parts)  
Dimension: Natural size 190x175x245(mm)



**ESMR02**

**ESMR02**

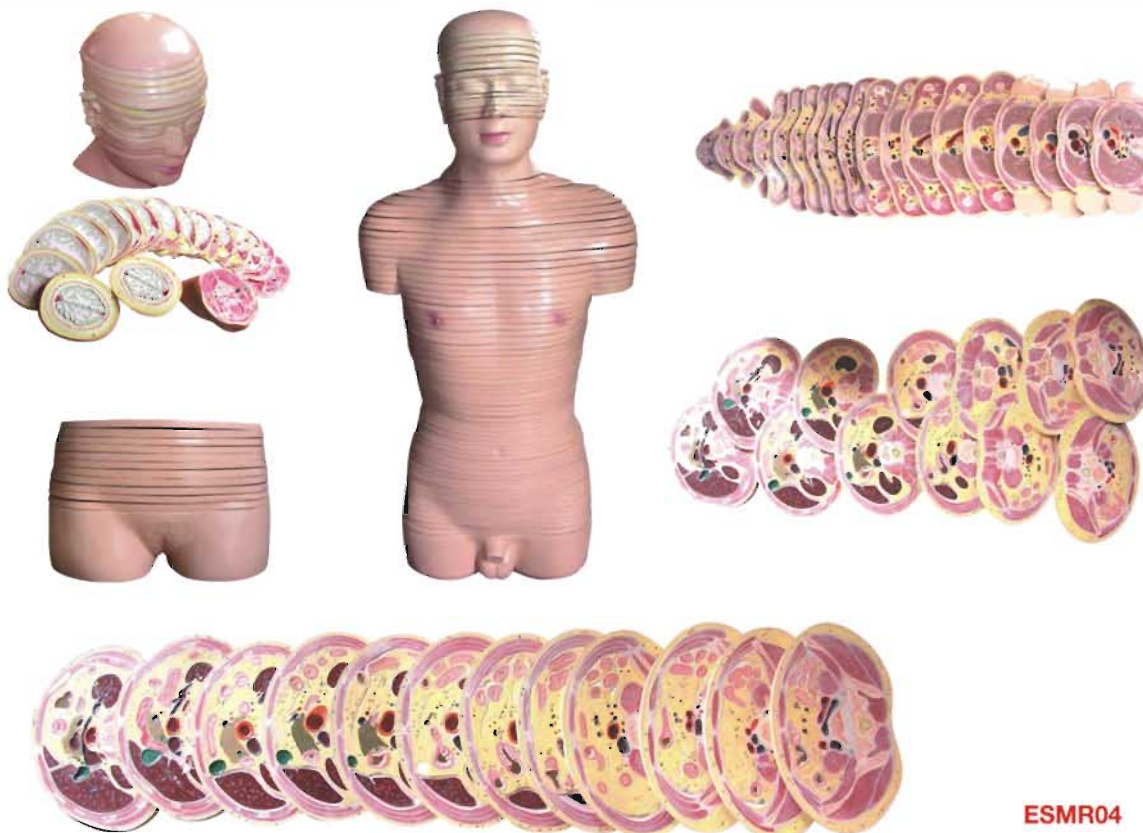
The dissection model of male torso with transverse section layer  
Dimension: Natural size 420x200x600(mm)



**ESMR03**

**ESMR03**

The dissection model of female torso with transverse section layer  
Dimension: Natural size 420x200x600(mm)



**ESMR04**

**ESMR04**

The dissection model of human head cervix and trunk horizontal layer  
Dimension: Natural size 420x200x850(mm)

**ESMR08**



**ESMR08**

The dissection model of female pelvis transection layer  
Dimension: Natural size 420x200x600(mm)

**ESMR09**



**ESMR09**

The dissection model of male pelvis transection layer  
Dimension: Natural size 420x200x400(mm)

**ESMR05**



**ESMR05**

The dissection model of human torso with sagittal layer  
Dimension: Natural size 420x200x845(mm)





## EQH 3323

### Cardiac Beat And Blood Circulation

Provides a section feature of enlarged heart and blood circulation diagram. The wall of heart is made of fl exible material which can demonstrates the heart beating by the mechanical power behind it. The valves can also show the opening and closing. Blood circulation is shown by light fl ash which in red represent arteries, in blue represent vein. It needs an power supply. Size(cm): 41x17x71



## EQH 3330

### Electronic Model Of Urine Formation

Provides a relief model of the structure unit of kidney which known as nephron with capillary vessel net. With fl ashing lights, the model displays blood circulation and urine formation continuously. The glomerular fi ltration, tubular reabsorption and tubular secretion can be demonstrated realistically by the fl ashing light. It needs power supply. Size(cm): 41x17x71



## EQH 3332

### Functional Human Respiration

Life size. Consists a rib cage and the major thoracic organs. Demonstrates the respiration realistically by the movement of the rib cage and diaphragm. It needs power supply. Size(cm): 41x17x71



## EQH 3323-2

### Blood Circulation

The model provides a section feature of enlarged heart and blood circulation diagram. Blood circulation is shown by light fl ash which in red represent arteries, in blue represent vein. It needs an power supply Size(cm): 35x90x8



**EQH 1551A**  
Relief model of respiratory system.  
Size(cm): 62x42



**EQH 1651**  
Relief model of blood circulation  
Size(cm): 62x42



**EQH 1652**  
Relief model of human nerves  
Size(cm): 62x42



**EQH 1560A**  
Relief model of human genital  
Size(cm): 62x42



**EQH 1553A**  
Relief model of human excretion system  
Size(cm): 62x42



**EQH 1653**  
Relief model of human skeleton  
Size(cm): 62x42

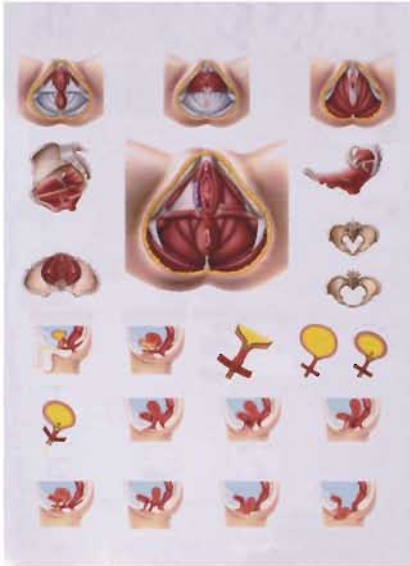


**EQH 1552A**  
Relief model of human digestive system  
Size(cm): 62x42



**EQH 1654**  
Relief model of human uropoiesis  
Size(cm): 62x42

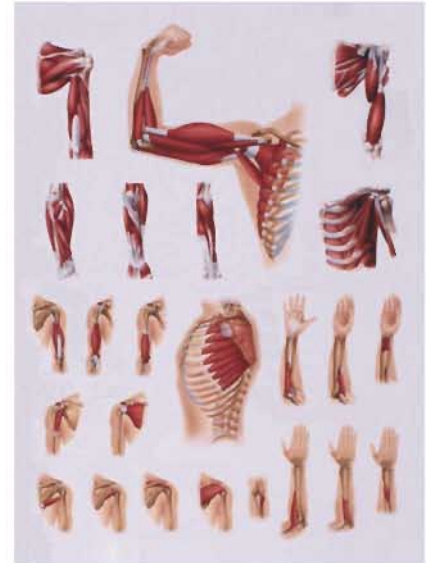
## EQH1600 3D relief chart



1



2



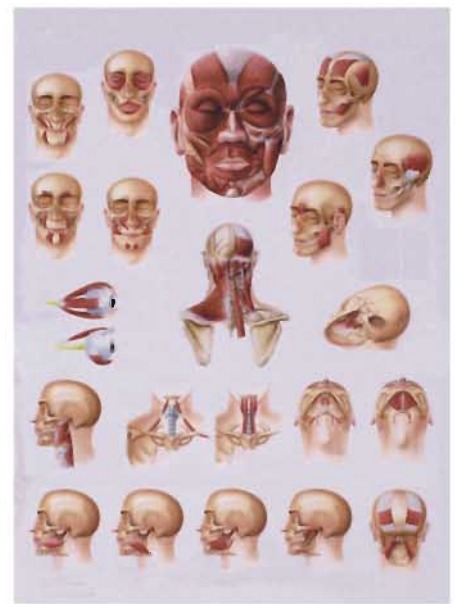
3



4



5

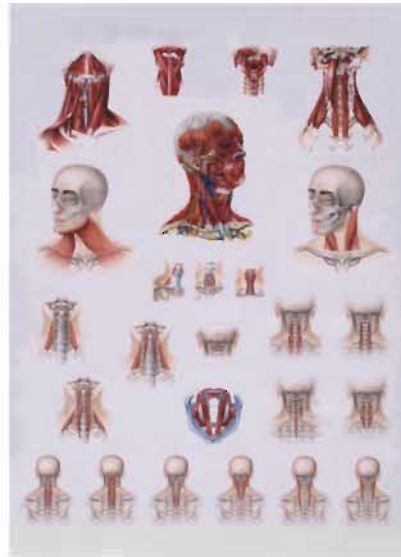


6





7



8



9



10



11



12



13



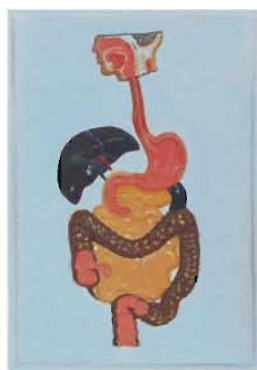
14



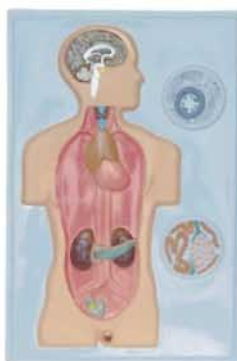
15



**EQH 1551**  
Relief model of  
respiratory system  
Size:62x42(cm)



**EQH 1552**  
Relief model of  
anat digestive system  
Size:49x34(cm)



**EQH 1553**  
Relief model of  
incretion system  
Size:62x42(cm)



**EQH 1594**  
Relief model of  
large intestine  
Size:62x42(cm)



**EQH 1554**  
Relief model of skin  
Size:48.5x36(cm)



**EQH 1555**  
Relief model of small intestine  
Size: 48.5x36(cm)



**EQH 1556**  
Relief model of kidney  
39x65(cm)



**EQH 1557**  
Relief model of eye  
Size:49x42.5(cm)



**EQH 1558**  
Relief model of liver leaf  
Size:62x42(cm)



**EQH 1559**  
Relief model of vertebrae configuration  
Size:66x60(cm)



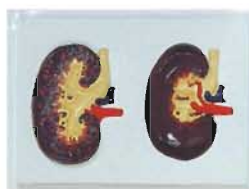
**EQH 1560**  
Relief model of human genital system  
Size:66x37(cm)



**EQH 1561**  
Relief model of human head  
Size:35x28(cm)



**EQH 1562**  
Relief model of ear  
Size:50x36(cm)



**EQH 1563**  
Relief model of  
anat kidney  
Size:23x17(cm)



**EQH 1573**  
Relief model of liver  
Size:25x32(cm)



**EQH 1573-1**  
Relief model of liver  
and gollbladder  
Size:62x42(cm)





**EQH 1564**  
Relief model of anat lizard  
Size:62x42(cm)



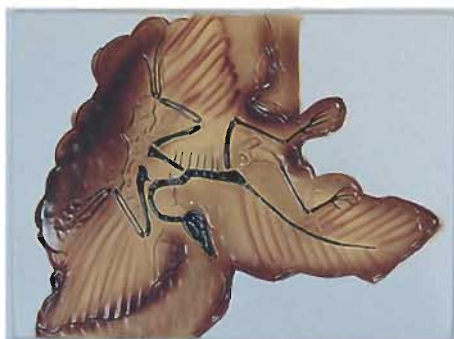
**EQH 1574**  
Relief model of anat earth worm  
Size:62x42(cm)



**EQH 1566**  
Relief model of beetle  
Size:48x42(cm)



**EQH 1567**  
Relief model of anat frog  
Size:62x42(cm)



**EQH 1568**  
Relief model of Archaeopteryx  
Size:62x42(cm)



**EQH 1569**  
Relief model of fish  
Size:62x42(cm)



**EQH 1570**  
Relief model of dog  
66x42(cm)



**EQH 1571**  
Relief model of anat snail  
62x42(cm)



**EQH 1572**  
Relief model of pigeon  
62x42(cm)





**EQH 1577**  
Relief model of stomach  
Size(cm):62x42



**EQH 1578**  
Relief model of wheat  
Size(cm):62x42



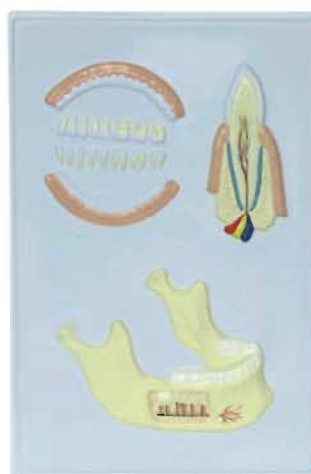
**EQH 1562-2**  
Relief model of ear  
Size(cm):62x42



**EQH 1579**  
Relief model of tongue  
Size(cm):62x42



**EQH 1580**  
Relief model of nose  
Size(cm):62x42



**EQH 1590**  
Relief model of  
dentition and teethbridge  
Size(cm):62x42



**EQH 1576**  
Relief model of heart  
Size(cm):62x42



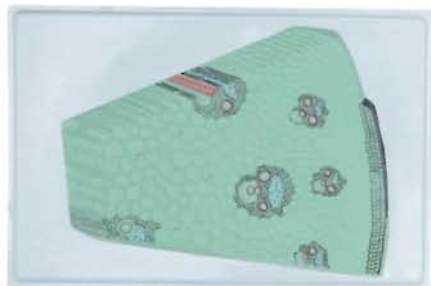
**EQH 1566-2**  
Relief model of beetle  
Size(cm):62x42



**EQH 1554-2**  
Relief model of skin  
Size(cm):62x42

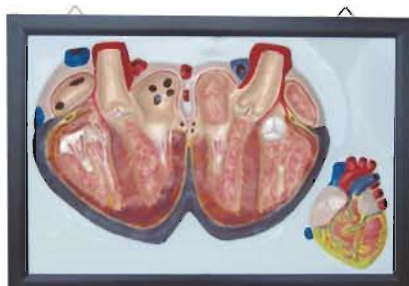


**EQH 1552-1**  
Relief model of digestive organs  
Size(cm):62x42



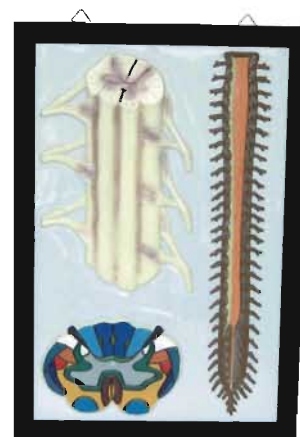
**EQH 1591**

Relief model of monocot stem  
Size(cm):62x42



**EQH 1576-1**

Relief model of human heart  
Size(cm):62x44



**EQH 1576-1**

Relief model of vertebrae configuration  
Size(cm):62x44



**EQH 1593**

Relief model of root  
Size(cm):62x42



**EQH 1589**

Relief model of human and ape  
Size(cm):62x44



**EQH 1592**

Relief model of leaf structure  
Size(cm):62x44



**EQH 1586**

Relief model of human brain(5pcs)  
Size(cm):62x42



**EQH 1577-1**

Relief model of human stomach  
Size(cm):66x44



**EQH 1588**

Relief model of cow stomach  
Size(cm):66x44



**EQH 1557-2**

Relief model of human inner eye  
Size(cm):66x44



**EQH 1581**

Relief model of the development of animal

Size(cm):62x42



**EQH 1581-1**

Relief model of the development of human

Size(cm):62x42



**EQH 1575**

Relief model of Rabbit

Size(cm):62x42



**EQH 1582**

Relief model of plant cell

Size(cm):62x42



**EQH 1583**

Relief model of claw

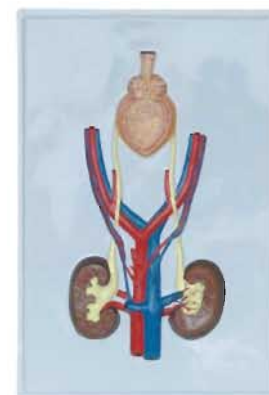
Size(cm):49x43



**EQH 1584**

Relief model of urinary organs

Size(cm):58x40



**EQH 1584-1**

Relief model of urinary organs

Size(cm):62x42



**EQH 1562-3**

Relief model of internal ear

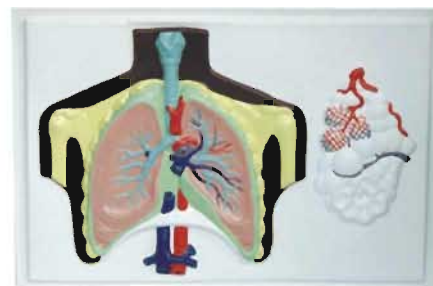
Size(cm):62x42



**EQH 1585**

Relief model of hydra

Size(cm):62x42



**EQH 1551-1**

Relief model of respiration organs

Size(cm):62x42





**EQH 1554-1**  
Relief model of skin  
66x42(cm)



**EQH 1556-1**  
Relief model of kidney  
66x42(cm)



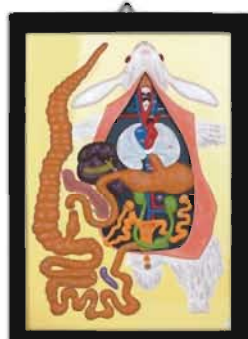
**EQH 1557-1**  
Relief model of eye  
66x42(cm)



**EQH 1558-1**  
Relief model of liver leaf  
66x42(cm)



**EQH 1564-1**  
Relief model of anat lizard  
66x42(cm)



**EQH 1574-1**  
Relief model of anat rabbit  
66x42(cm)



**EQH 1565-1**  
Relief model of anat  
earth worm  
66x42(cm)



**EQH 1566-1**  
Relief model of beetle  
66x42(cm)



**EQH 1570-1**  
Relief model of dog  
66x42(cm)



**EQH 1571-1**  
Relief model of anat snail  
66x42(cm)



**EQH 1572-1**  
Relief model of pigeon  
66x42(cm)



**EQH 1568-1**  
Relief model of Archaeopteryx  
66x42(cm)



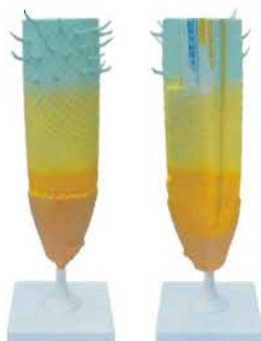
**EQH 1562-1**  
Relief model of ear  
66x42(cm)



**EQH 1569-1**  
Relief model of fish  
66x42(cm)



Size(cm): 16x16x50



Size(cm): 12x12x35



## EQH 3202 Root tip

This model can be used as a visual teaching aid in middle school biological lessons. Its structure can be seen clearly, mounted on plastic base, made of plastic.

## EQH 3202-1 Model of dissected onion

Size(cm): 17x13x23



## EQH 3207 Peach blossom

Shows the typical components of this kind of flower. Petals and stigma are removable, one anther is sectioned to show the pollens. On stand with base.

Size(cm): 17x17x17



## EQH 3207-8 Peach blossom

Teach students about angiosperm pollination and fertilization, a greatly enlarged replica of a dicot flower that features detachable petals, sepals and stamens. Detailed structures such as pollen grains, anthers, the ovary, pollen tube and micropyle give students an upclose look at the reproductive functions of plants. Size(cm): 29x16x9



## EQH 3219 Paramecium

Build student interest in the form and function of the paramecium with this richly detailed soft foam model. Model can be used in a variety of ways: as a puzzle or matching game, for tracing and coloring activities, even in a dramatic play. Mounted on a base.

Size(cm): 38x20x9.5



## EQH 3208 Wheat flower

Includes a compound spike and a flower. The flower is greatly enlarged to show the floral components. Size (cm): 38x19x9.5



**EQH 3207-1**  
**Sunflower flower model**

The model shows the inner tubular corolla magnified 10 times and the outer ray flower magnified 3 times. The tubular corolla can be dissected into 2 halves.  
Size(cm): 33x12x12



**EQH 3207-2**  
**Cornflower flower model**  
Size(cm): 12x12x23



**EQH 3207-4** **Potato flower model**  
Size(cm): 19x19x20



**EQH 3207-3** **Tulip flower model**  
The section of stamen and pistils is removable, 3 times magnification.  
Size(cm): 16x16x28

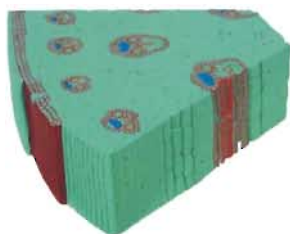


**EQH 3207-5**  
**Cabbage flower model**  
The part that features petals and stamen can be removed for a detailed view of the carpel.  
Size(cm): 20x20x28



**EQH 3207-6** **Pea flower model**  
Size(cm): 24x18x18





## EQH 3204 Monocot Stem

Shows the typical structures of the monocot stem. Ideal for demonstrating the general monocot. On base. Size (cm): 42x13x41

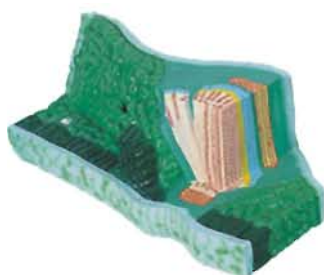
The model is designed for the demonstration of the anatomical of stems in a middle school class of botany. It shows the histological structures in a crosssection and a longitudinal radial rection.



## EQH 3205 Dicot Stem

Shows the typical structures of the dicot stem. Ideal for demonstrating the general dicot. On base. Size (cm): 36x24x17

The model is designed for the demonstration of the anatomy of stems in a middle school class of botany. It shows the histological structures in a cross-section and a longitudinal radial rection.



## EQH 3206 Leaf Structure

Shows the typical structures of the dicot leaf. Size (cm): 42x13x41



Size(cm): 26x26x30

## EQH 3221-12 Aids-virus

This model of the hivirus, enlarged millions of times, shows the outer lipid membrane with protein structures, and the internal nucleus which contains the viral hereditary matter(RNA). the nucleus is removable and condoms can be put underneath to provide a message regarding measures to take in protecting against HIV. delivered without condoms. mounted on base.



## EQH 3203 Vessels And Sieve Tube Set

Includes 4 pieces. Shows the feature of reticular, spiral, annular vessels and sieve tube. Plastic. Size (cm): 26x15x9



## EQH 3224-4 Model of Ribosome

Size (cm): 14x14x30



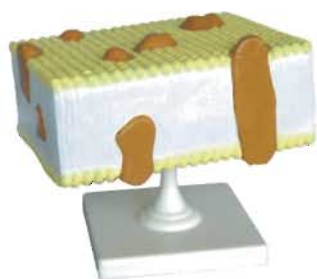
## EQH 3224 Cell Organs

Includes chloroplast, Golgi body, mito, inner and central body (two pieces) Size (cm): 27x20x17



## EQH 3224-3 Endoplasmic Reticulum

Size (cm): 31x13x8



1 Size(cm): 24x20x15



2 Size(cm): 30x20x15

#### EQH 3223 Cell membrane

It can demonstrate 17 kinds of different molecule structure model.



#### EQH 3201-1 Plant cell model

This model details a cell's interior and the interrelationships among organelles, patterned after the latest interpretation of cell structure. Enlarged and clearly distinguishable organelles and inclusions, including endoplasmic reticulum, mitochondria, ribosomes, Golgi apparatus, centrioles, nucleus, and nucleolus. The sectioned cell also has a cutway nucleus to show its inner structure. It is mounted on a base. Size(cm): 35x16x8



EQH 3201  
Model of plant cell  
Size(cm): 32x30x5



#### EQH 3216-1 Model of animal cell

A realistic representation of plant cell structure, the model, includes the nuclear membrane, cell wall, chromosomes, endoplasmic reticulum, chloroplast, large central vacuole, mitochondria and ribosomes, the detailed cell wall shows the relationship to adjacent cells. It is mounted on a base. Size(cm): 30x20x51



EQH 3216-2 Model of plant cell  
Size(cm): 30x20x51



Size(cm): 12x12x18

#### EQH 3224-1

##### Model of mitochondrion

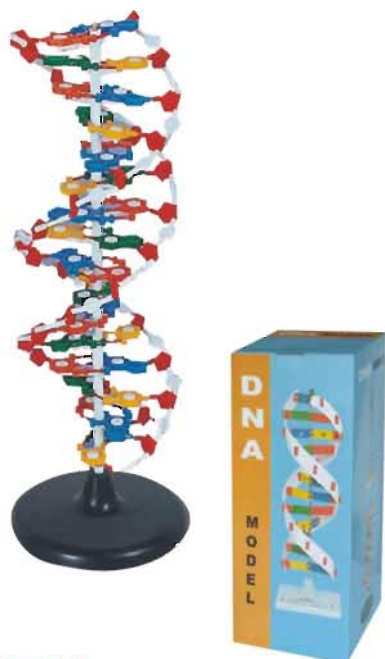
The mitochondrion, is re-created in a superb, highly detailed model showing the double-wall membrane, cristae, subunits, granules localized on the inner wall, and the matrix material filling the body. The structure is shown in a longitudinal section enlarged. The model is mounted on a base.



#### EQH3216

##### Model of microstructural cell

This model is used as a visual teaching aid in middle school biological lessons to help students get an idea of the internal structure of plant cell. made of plastic. Size(cm): 38x20x62



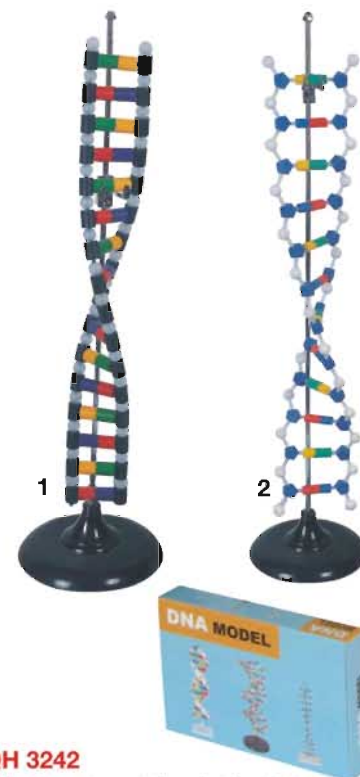
**EQH 3212**  
**DNA Structure**

The unique plastic for allows you to assemble the model and then twist it into a double helix, instead of building it around a center post as in other models. Each of the four nitrogenous bases comes in a different unlabeled color, so students can design their own base pairing. The model is removable from the plastic base and can be extended to its full length to demonstrate strand separation. Size (cm): 23x22x68.5



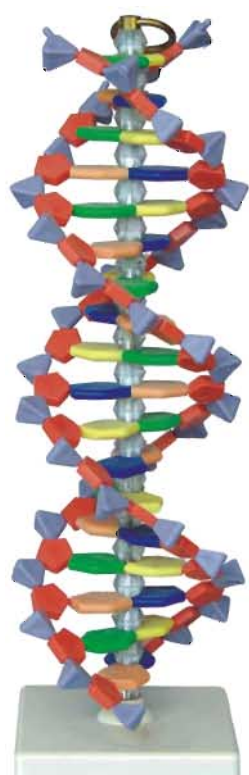
**EQH 3212-1**  
**DNA Activity Model**

Students construct two complete DNA segments with this set. The components consist of four nucleic acid bases: cytosine, adenine, guanine and thymine, that are designed so only the proper bases fit together. Includes 48 bases, four strands, two supporting rods with penstals and illustrated instructions. Size (cm): 12x12x46



**EQH 3242**  
**DNA Structure Simulation Kit**

Includes 6 kinds of pieces representing the different parts of DNA structure. An excellent kit for one or two student to build a double helix of DNA, and to learn replication of DNA. The amounts of pieces are enough to build a helix. With case. Size (cm): 12x12x30



**EQH 3212-3**  
**DNA Structure**

An easy-to-assemble DNA model, this stunning recreation consists of specially shaped, brilliantly-colored plastic pieces. Each base in the 12 base pair model is a subtly different shape, and the sugars are made from a slightly different plastic so the model flexes correctly to create a realistic double helix. You can deconstruct the double helix into two separate strands by moving the central supporting spine and pulling the helix apart along the hydrogen bonds. Size (cm): 12x12x40



**EQH 4201**  
**Biomembrane**  
Size (cm): 20x15x30





**EQH 3212-2**

**Protein Structure**

Tall 68.50cm. An articulated model to show the double helix of DNA structure. Includes 15 base pairs to show one and half helix. All components are identified by different colors. The connections between the base pairs are also clearly shown. Size (cm): 23x22x68.5



**EQH 3224-2**

**Model of Chloroplast**

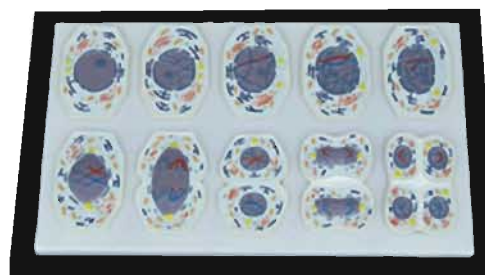
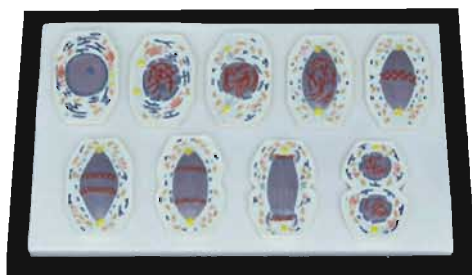
Take apart the three-dimensional model of a chloroplast and remove the thylakoids and linking stroma to reveal the interior structure where photosynthesis occurs. Patterned after the latest electron microscopy interpretation, the structure is depicted in longitudinal and cross sections to show the interior of the chloroplast. One quarter of the model is cut away to reveal the inner detail in three levels. Mounted on a base.



**EQH 3228-1**

**Ultrastructure Of Animal And Plant Cell**

This model is suitable for teaching the internal structures and differences between animal cell & plant cell. Size(cm): 61.5x5.2x52.5



**EQH 3228-2**

**Animal Mitosis and Meiosis Set**

Includes two set to show animal cell mitosis and meiosis. On base. Size(cm): 59x37x5



Model of plant cell mitosis



Model of animal cell mitosis

**EQH 3228**

**Mitosis Set**

Includes two set to show animal cell and plant cell mitosis. Each set has six relief models showing the different stage of the procession.. On stand with base. Size(cm): 46.5x14.5x12



**EQH 3212-4**

**Amino Acid of Polypeptide Chain**

Size (cm): 17x15x24

## EQH 3221

### Earthworm model

Size(cm): 61x11x24



(dissection anatomical and magnified earthworm model). It is designed in accordance with textbooks used for high school biology as a visual aid on the subject of morphology of the earthworm. It may be used for classroom self-study and shows the external features and internal structure of the anterior portion of an earthworm.

Size(cm): 33x23x5



## EQH 3221-1

### Ameoba

1000 times enlarged, on a base, Made of high quality pvc

## EQH 3232

### Schistosome In Copula

Size(cm): 60x25x6



The model, demonstrating the external features and internal structure of the schistosome, is provided as an aid in teaching biology, entomology and animal taxonomy.



## EQH 3214

### Hydra Set

Includes two models. One shows the median section. Other shows the detail of the body wall. Each on stand with base.

## EQH 3214-1

## EQH 3222-1

### River mussel

Size(cm): 12x12x15



## EQH 3222

### River Mussel

Size(cm): 45x35x12

After removing the shell of the dissection model of a river mussel, its complete internal organ system including the nerves and circulatory system and gill, etc. can be seen clearly. Used as the visual aids for lecture in biology class. Made of hard plastic.

## EQH3225 Amphioxus



Shows the key structures of this animal. Enlarged. Size(cm): 70.5x7x14.5

The model, demonstrating the external features and internal structure of the lancelet, is provided as an aid in teaching biology, entomology and animal taxonomy.

## EQH3218 Model of planarian



The model, demonstrating the external features and internal structure of the planarian, is provided as an aid in teaching biology, entomology and animal taxonomy. Mounted on plastic base. Size(cm): 70.5x10

## EQH3218-1 Model of planarian sliver

Size(cm): 25x10x2







Frog dissected model

**EQH3227-5**

The perfect tool for teaching frog anatomy, it is large enough to be seen from the back of the classroom. Detailed enough to warrant close-up study. Features both ventral and dorsal dissections. Ventral side displays the digestive, respiratory, circulatory and urogenital systems. Also includes liver, gall bladder, two egg masses and vomerine teeth. Dorsal side exposes the brain, central nervous system and an eyeball. Both side reveal skeletal and muscular systems.



**EQH 4103-1 Lizard Dissection Model**

This model is illustrated the symbol of vertebrate animal-Lizard. Make students understand the inner and surface structure of the lizard. The lizard is male, length is around 410mm



**EQH 3227-10**

**Model of Dog Ear**  
Size(cm): 12x12x13



**EQH 3211 Vertebral Animal Development Set**

Consists of nine models of one cell, four cell, eight cell, blastula stage, early gastrula, late gastrula, early neural groove and 5.5mm stage. The first three models show only the surface feature. Rest of six are sectioned to show the inner structures. On common stand. Size(cm): 47x23x14



**EQH3342-6 Cattle acupuncture model**

This model shows 68 useful acupuncture points on left side of the Cattle body marked with numerals. Made of PVC plastic. Used for veterinarian's reference. Packing: 36x23x90CM, 10pcs/carton.



**EQH 3342-8 Dog acupuncture model**

This model shows 72 useful acupuncture points on left side of the dog body marked with numerals. Made of PVC plastic. Used for veterinarian's reference. Packing: 64x62x32CM, 10pcs/carton.

**EQH 3342-5**

**Horse acupuncture model**

This model shows 114 useful acupuncture points on left side of the horse body marked with numerals. Made of PVC plastic. Used for veterinarian's reference.



Packing: 54x53x30CM, 10pcs/carton.



**EQH 3342-4**

**Cat acupuncture model**

This model shows 36 useful acupuncture points on left side of the Cat body marked with numerals. Made of PVC plastic. Used for veterinarian's reference. Packing: 91x44x33CM, 18pcs/carton.



**EQH 3342-7**

**Pig acupuncture model**

The left half of the model shows the constitution white boar and 55 acupuncture points often in used on the head, neck, buttock, tail and limbs. The right half shows the superficial layer muscles, and the longitudinal section of the dorsal vertebral column and the internal organs. Made of PVC plastic. Packing: 36x23x90CM, 10pcs/carton.



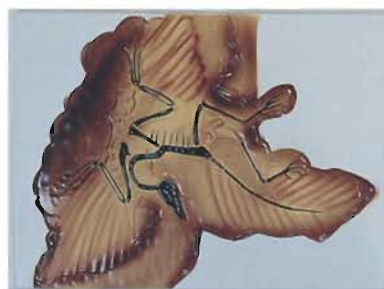


## EQH 3210

### Locust

Provides the left half section. Shows the internal and external structures in great detail.

Size(cm): 62x20.5x38.5



## EQH 3217

### Archaeopteryx Fossil And Its Restoration

Includes a fossil and a bird model. The fossil is a reproduction of the original one and the bird is restored by the features shown on the fossil. The fossil is mounted on base, the bird on rock-like base.

Size(cm): 25x20.5x38.5



## EQH 3227-19

### Model of snake

Size: 33x21x3.5cm



## EQH 3227-20

### Model of snake

Size: 30x16x4cm



## EQH 3227-21

### Model of Lizard

Size: 21x10x4.5cm



## EQH 3227-22

### Model of northmost little fish

Size: 15x9.5x10cm



## EQH 3227-23

### Model of newt

Size: 15x9.5x10cm



## EQH 3227-24

### Model of toad

Size: 16x14x8cm



## EQH 3227-25

### Model of frog

Size: 12x11x7cm



## EQH 3227-26

### Model of fish

Size: 23x9.5x14cm



**EQHA 3227-20**  
Model of stegosaurus  
Size:52x16.5x15cm



**EQHA 3227-21**  
Model of tyrannosaurus rex  
Size:43x16.5x15cm



**EQHA 3227-22**  
Model of brachiosaurus  
Size:28x15x22cm



**EQHA 3227-23**  
Model of brontosaurus  
Size:42x16.5x22cm



**EQHA 3227-24**  
Model of edmontosaurus  
Size:42x16.5x22cm



**EQHA 3227-26**  
Model of paleozoic cayman  
Size:36x16.5x8cm



**EQHA 3227-25**  
Model of paleozoil plesiosaurus  
Size:39x15x22cm



**EQHA 3227-27**  
Model of pterodactyl pterosaur  
Size:34x21x24cm



**EQHA 3227-28**  
Model of paleozoic tropical fish  
Size:37x15x30cm



**EQHA 3227-29**  
Model of paleozoic swordfish  
Size:33x15x22cm



**EQH 3227-17**  
**Evolution of horse leg**  
Size: 46x15x47cm



**EQH 3227-18**  
**Model of horse's leg (upper & lower)**  
Size: 28x18x10cm



**EQH 3227-9**  
**Model of sheep leg (upper & lower)**  
Size: 12x12x30cm



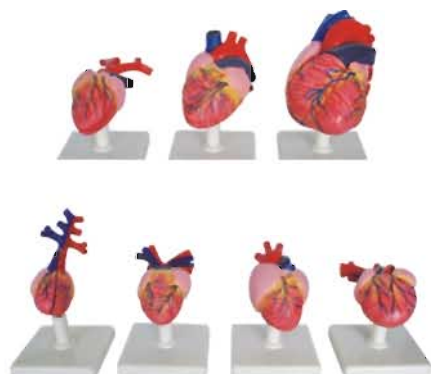
**EQH 3227-13**  
**Knee joint of dog**



**EQH 3227-12**  
**Model of Dog joint**



**EQH4107-1 Models of the brains of vertebrates**  
Altogether 8 models( many times enlarged):1.Lampetra fl uviatilis , 2. Dog-fi sh, 3. Trout , 4.Forg,5. Alligator, 6. Dove 7. Rabbit, 8. Dog. Each on a base. Weight of the series: 1.6kg.



**EQH4108-1 Models of the hearts of vertebrates**  
Altogether 7 models, natural size and slightly enlarged, mounted on a base each.1. Fish 2.Frog 3. Tortoise, 4. Crocodile 5. Bird, 6. Dog and 7. Human Being Weight of the series: 2.9kg.



**EQH3227-27**  
**The model of Chicken embryonic development process**  
With the chart we can clearly see the embryonic development processed how the fertilized egg hatched chickens during 21 days and also could see the internal structure of embryos.



These spotless, specially treated skeleton specimens stand rigidly in natural posture on the plastic or wooden base covered with a transparent case of plexiglass. The illustrations in English are attached herewith. Used as the visual aids in the class.



**EQH 4141 Rabbit skeleton**  
Size(cm): 35x12x19



**EQH4144 Pigeon skeleton**  
Size(cm): 18x14x20



**EQH 4145 Dog skeleton**  
Size(cm): 42x18x31



**EQH 4142 Fish skeleton**  
Size(cm): 26x8x10.5



**EQH 4146 Lizard skeleton**



**EQH 4143 Frog skeleton**  
Size(cm): 15x12x5.6



**EQH 4149 Cat skeleton**  
Size(cm): 35x12x19



**EQH 4147 Bat skeleton**  
Size(cm): 16x12.5x4



**EQH 4148 Snake skeleton**  
Size(cm): 36x12x6



**EQH 4144-1**  
**Stuffed specimen & skeleton of pigeon**  
Size: 31x26x21cm



**EQH 4155**  
Specimen of locus development  
Size: 17x8x2cm



**EQH 4155**  
Specimen of insect  
Size: 16.5x8x2.5cm



**EQH 4155**  
Specimen of pest  
Size: 17x17x3cm



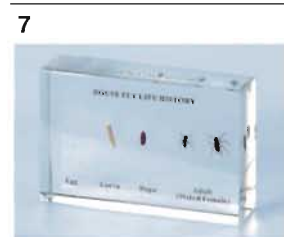
**EQH 4155**  
Specimen of pig roundworm  
Size: 16x6x2cm



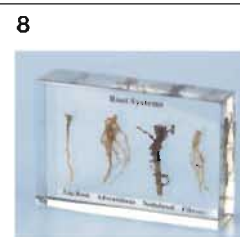
**EQH 4155**  
Specimen of silk worm development  
Size: 17x6.5x2.5cm



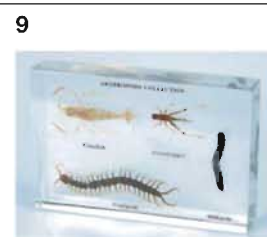
**EQH 4155**  
Specimen of silk worm development  
Size: 12x12x25cm



**EQH 4155**  
Specimen of house fly life history  
Size: 9x6x2.5cm



**EQH 4155**  
Specimen of root systems  
Size: 9x6x2.5cm



**EQH 4155**  
Specimen of arthropod  
Size: 14x9.5x2.5cm



**EQH 4155**  
Specimen of bat  
Size: 14x9.5x3cm



**EQH 4155**  
Specimen of mosquito development  
Size: 9.5x9.5x2cm



**EQH 4155**  
Specimen of spotted cerambycid  
Size: 14x10x3cm



**EQH 4155**  
Specimen of fish  
Size: 10x4x4cm



**EQH 4155**  
Specimen of frog development  
Size: 17x8.5x2.5cm



**EQH 4155**  
Specimen of gecko  
Size: 12.5x5.5x2cm

16



**EQH 4155**  
Specimen of octopus  
Size: 10x10x5.5cm

17



**EQH 4155**  
Specimen of butterfly  
Size: 7.5x7.5x2cm

18



**EQH 4155**  
Specimen of fungus  
Size: 7.5x7.5x2cm

19



**EQH 4155**  
Specimen of tree stem  
Size: 7.5x7.5x2cm

20



**EQH 4155**  
Specimen of corn  
Size: 13.5x9x2.5cm

21



**EQH 4155**  
Specimen of paddy  
Size: 13.5x5.5x2.5cm

22



**EQH 4155**  
Specimen of peanut  
Size: 13.5x8.5x2.5cm

23



**EQH 4155**  
Specimen of pine cone  
Size: 7.5x7.5x1.5cm

24



**EQH 4155**  
Specimen of soybean development  
Size: 7.5x7.5x1.5cm

25



**EQH 4155**  
Specimen of butterfly and moth  
Size: 7x7x9cm

26



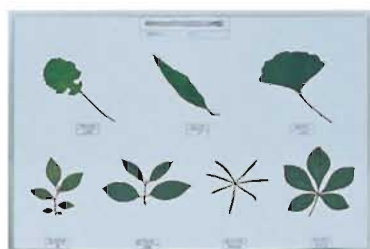
**EQH 4155**  
Specimen of cankerworm  
Size: 4x4x8cm



**EQH 4151**  
Herbarium of Rare plant leaf



**EQH 4155**  
Inflorescence types



**EQH 4159**  
leaf types



**EQH 4167** Petal types



**EQH 4158** Red algae



A set of animal and plant life circle models depicting the life cycles of different animals and plants. Subjects covered include bee, moss, looper and so on.



**EQH4132**  
**Bee life circle**  
Size(cm):21.8x15.3x2.1



**EQHS4198**  
**Moss life circle**  
Size(cm):21.8x15.3x2.1



**EQH4139**  
**Looper's mimicry life circle**  
Size(cm):21.8x15.3x2.1



**EQH4191**  
**Fossile**



**EQH403**  
**Coal and coal carbonization specimen**



**EQH4001**  
**Mineral specimen(42pcs)**



**EQH4009-2**  
**Mineral rock specimen(50pcs)**



**EQH4009**  
**Mineral rock specimen(42pcs)**  
Size(cm):32x20x3



**EQH4009-3**  
**Mineral rock specimen(40pcs)**



**EQH4009-4**  
**Mineral rock specimen(15pcs)**



**EQH4009-5**  
**Mineral rock specimen(80pcs)**



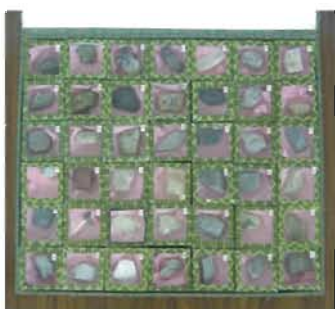
**EQH4009-6**

Mineral rock specimen (12pcs)



**EQH4009-7**

Mineral rock specimen (24pcs)



**EQH4009-8**

Mineral rock specimen (42pcs)



**EQH4009-9**

Mineral rock specimen (24pcs)



**EQH4191-1**

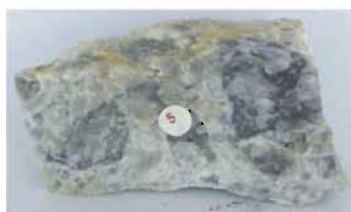
Specimen of coral



Talc



Solenite



Milky quartz



Coal



Fluorite



Malachite



Pyrite



Blue malchite



Mative sulphur



Hematite

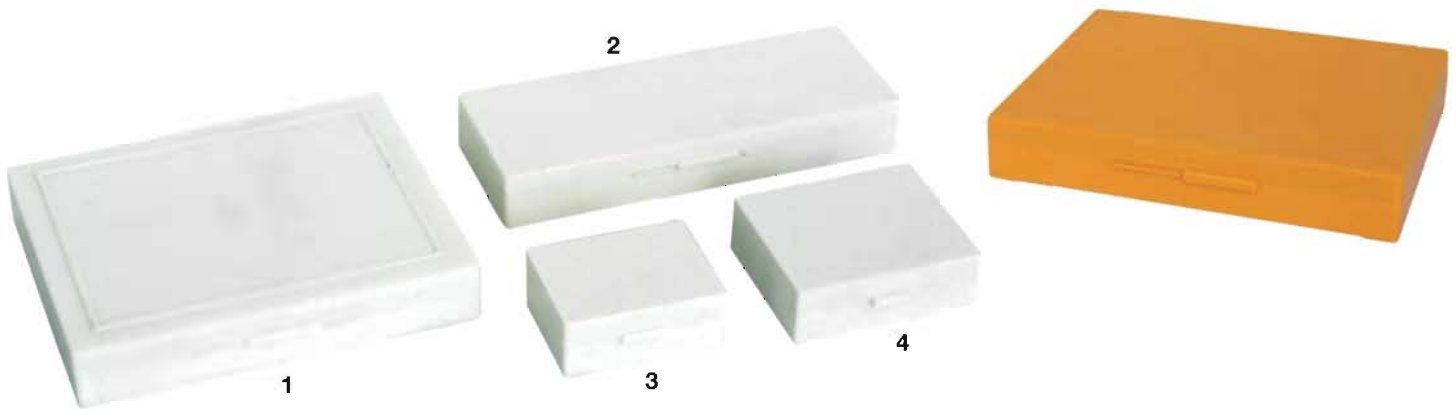


Realgar



Limonite



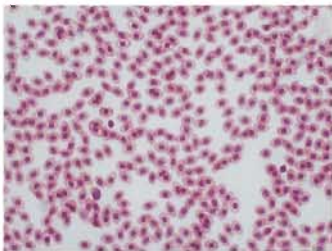


**EQH2729**

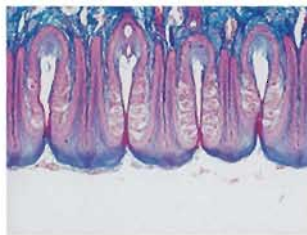
Slide box (15pcs, 25pcs, 60pcs, 120pcs)



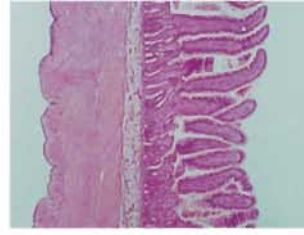
**EHN01** Motor neuron.w.m



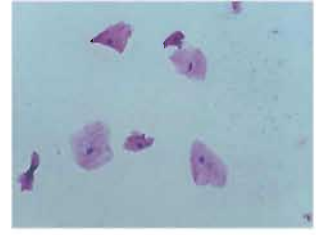
**EHN01** Motor neuron.w.m



**EHD01** Taste buds.sec.



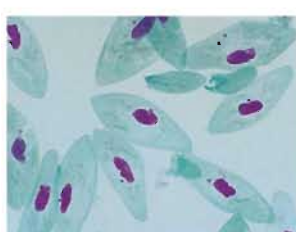
**EHD04** Intestine.c.s.



**EHE01** Human mouth  
epithelia cell. w.m.



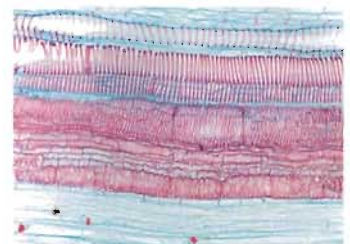
**EZP03** Paramecium conjugation.  
w.m.



**EZP06** Paramecium.w.m.



**EZPL08** Taenia solium scolex.w.m.



**E4205** Cucurbita stem,l,s.